

(LZZRD.LZZRD3) 17117

# LZZRD THREE ARRIVAL (RNAV)

AL-12 (FAA)

ALBUQUERQUE INTL SUNPORT (ABQ)

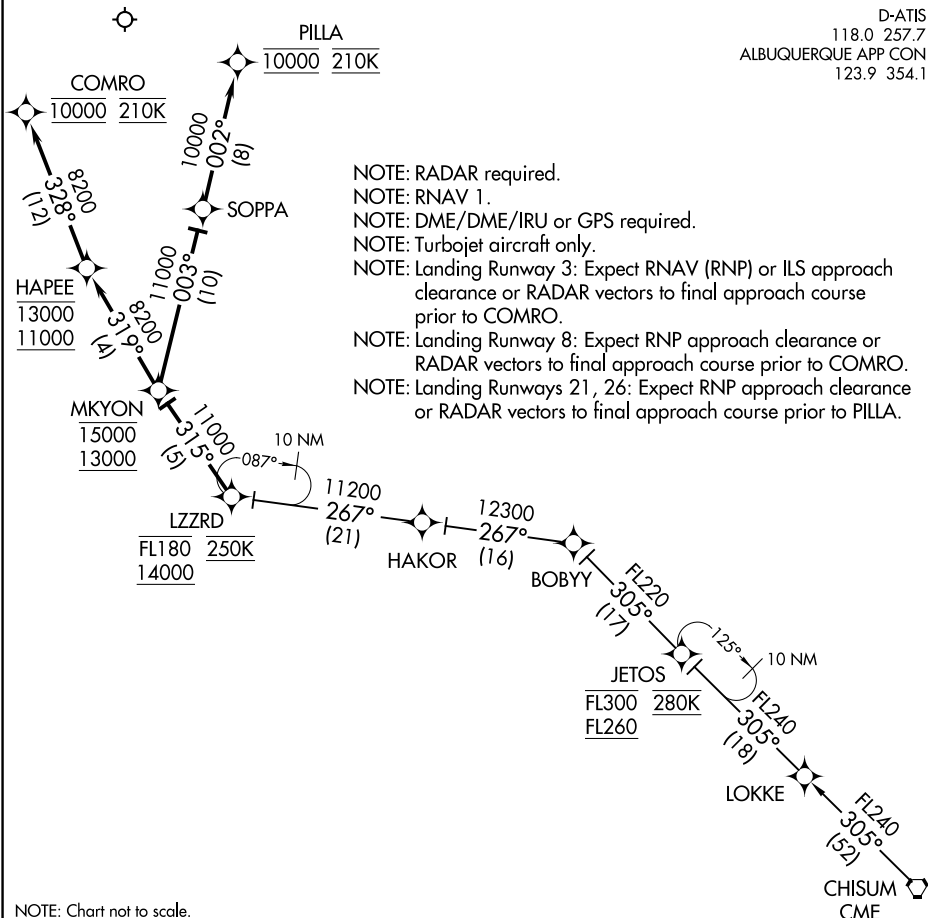
ALBUQUERQUE, NEW MEXICO

D-ATIS

118.0 257.7

ALBUQUERQUE APP CON

123.9 354.1



- NOTE: RADAR required.
- NOTE: RNAV 1.
- NOTE: DME/DME/IRU or GPS required.
- NOTE: Turbojet aircraft only.
- NOTE: Landing Runway 3: Expect RNAV (RNP) or ILS approach clearance or RADAR vectors to final approach course prior to COMRO.
- NOTE: Landing Runway 8: Expect RNP approach clearance or RADAR vectors to final approach course prior to COMRO.
- NOTE: Landing Runways 21, 26: Expect RNP approach clearance or RADAR vectors to final approach course prior to PILLA.

SW-1, 10 SEP 2020 to 08 OCT 2020

SW-1, 10 SEP 2020 to 08 OCT 2020

NOTE: Chart not to scale.

## ARRIVAL ROUTE DESCRIPTION

### CHISUM TRANSITION (CME.LZZRD3)

From LZZRD on track 315° to cross MKYON between 13000 and 15000.

**LANDING RUNWAY 3:** From MKYON on track 319° to cross HAPEE between 11000 and 13000, then on track 328° to cross COMRO at 10000 and at 210K. Expect RNAV (RNP) or ILS approach or RADAR vectors to final approach course.

**LANDING RUNWAY 8:** From MKYON on track 319° to cross HAPEE between 11000 and 13000, then on track 328° to cross COMRO at 10000 and at 210K. Expect RNAV (RNP) approach or RADAR vectors to final approach course.

**LANDING RUNWAYS 21/26:** From MKYON on track 003° to SOPPA, then on track 002° to cross PILLA at 10000 and at 210K. Expect RNAV (RNP) approach or RADAR vectors to final approach course.

# LZZRD THREE ARRIVAL (RNAV)

(LZZRD.LZZRD3) 08JAN15

ALBUQUERQUE, NEW MEXICO  
ALBUQUERQUE INTL SUNPORT (ABQ)