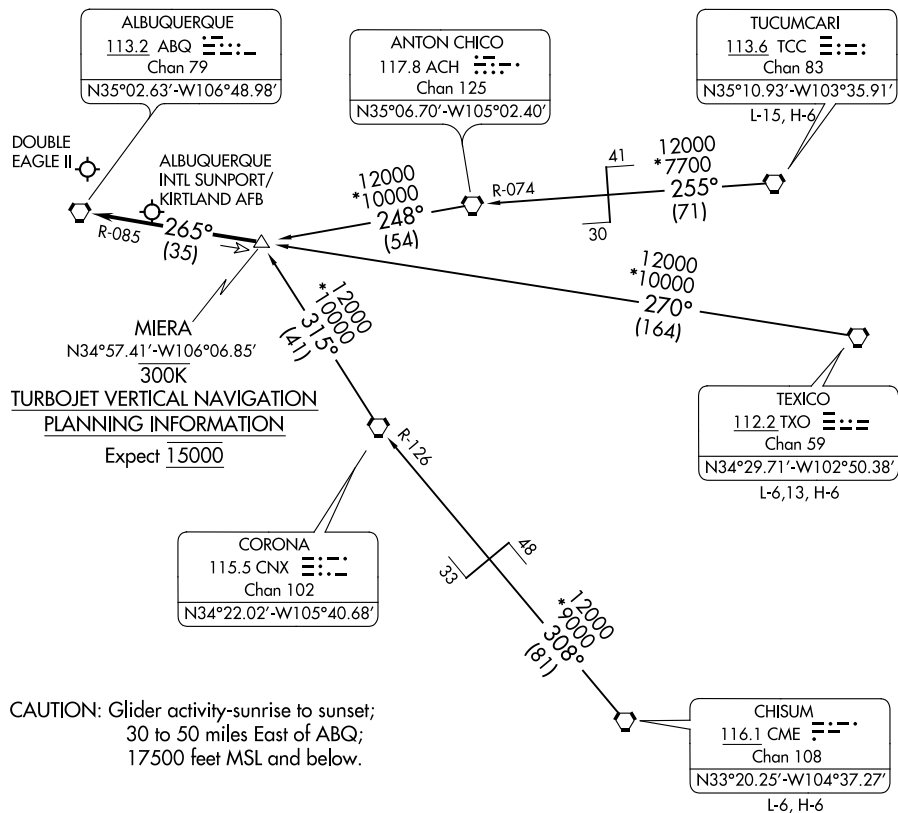


# MIERA TWO ARRIVAL

AL-12 (FAA)

ALBUQUERQUE, NEW MEXICO

ALBUQUERQUE APP CON  
123.9 354.1  
ABQ D-ATIS  
118.0 257.7



SW-1, 10 SEP 2020 to 08 OCT 2020

SW-1, 10 SEP 2020 to 08 OCT 2020

## ARRIVAL ROUTE DESCRIPTION

**CHISUM TRANSITION (CME.MIERA2):** From over CME VORTAC via CME R-308 and CNX R-126 to CNX VORTAC, then via CNX R-315 to MIERA DME fix. Thence. . .

**TEXICO TRANSITION (TXO.MIERA2):** From over TXO VORTAC via TXO R-270 and ABQ R-085 to MIERA DME fix. Thence. . .

**TUCUMCARI TRANSITION (TCC.MIERA2):** From over TCC VORTAC via TCC R-255 and ACH R-074 to ACH VORTAC, then via ACH R-248 to MIERA DME fix. Thence. . .

. . . From over MIERA DME fix via ABQ R-085 to ABQ VORTAC. Expect vectors to final approach course after passing MIERA DME fix.

# MIERA TWO ARRIVAL

ALBUQUERQUE, NEW MEXICO