

# MNZNO THREE DEPARTURE (RNAV) AL-12 (FAA)

SW-1, 10 SEP 2020 to 08 OCT 2020

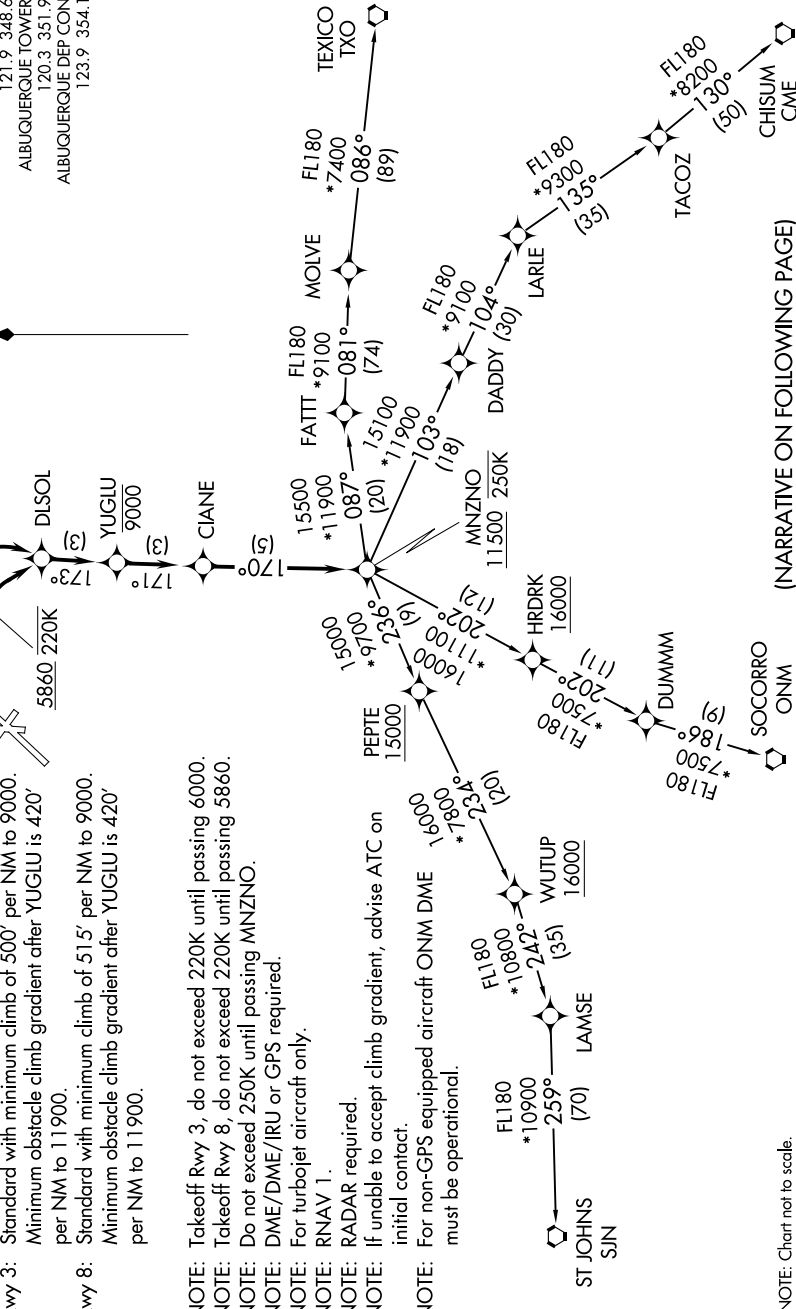
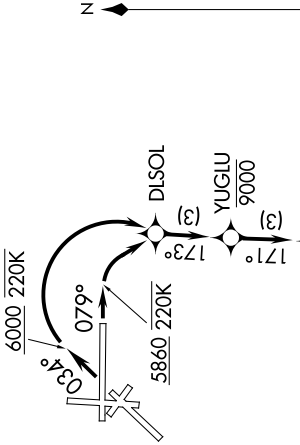
**TOP ALTITUDE:  
FL200**

### TAKEOFF MINIMUMS

- Rwy 3: Standard with minimum climb of 500' per NM to 9000. Minimum obstacle climb gradient after YUGLU is 420' per NM to 11900.
- Rwy 8: Standard with minimum climb of 515' per NM to 9000. Minimum obstacle climb gradient after YUGLU is 420' per NM to 11900.

- NOTE: Takeoff Rwy 3, do not exceed 220K until passing 6000.
- NOTE: Takeoff Rwy 8, do not exceed 220K until passing 5860.
- NOTE: Do not exceed 250K until passing MNZNO.
- NOTE: DME/DME/IRU or GPS required.
- NOTE: For turboprop aircraft only.
- NOTE: RNAV 1.
- NOTE: RADAR required.
- NOTE: If unable to accept climb gradient, advise ATC on initial contact.
- NOTE: For non-GPS equipped aircraft ONM DME must be operational.

D-ATIS  
118.0 257.7  
CLNC DEL  
119.2 259.3  
CPDIC  
GND CON  
121.9 348.6  
ALBUQUERQUE TOWER  
120.3 351.9  
ALBUQUERQUE DEP CON  
123.9 354.1



(NARRATIVE ON FOLLOWING PAGE)

NOTE: Chart not to scale.

# MNZNO THREE DEPARTURE (RNAV)

SW-1, 10 SEP 2020 to 08 OCT 2020