

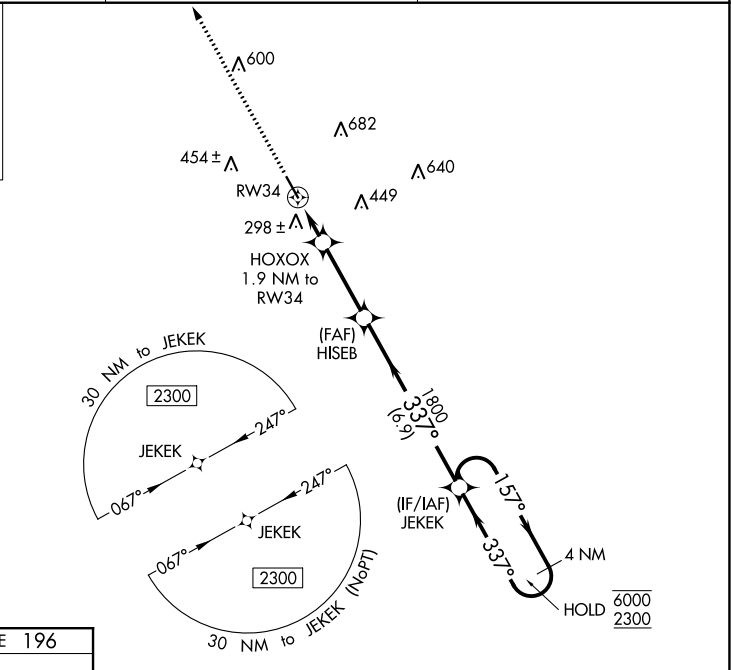
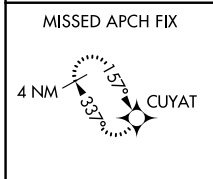
WAAS CH 70635 W34A	APP CRS 337°	Rwy Idg TDZE Apt Elev	5000 196 200
--	------------------------	-----------------------------	---

RNAV (GPS) RWY 34

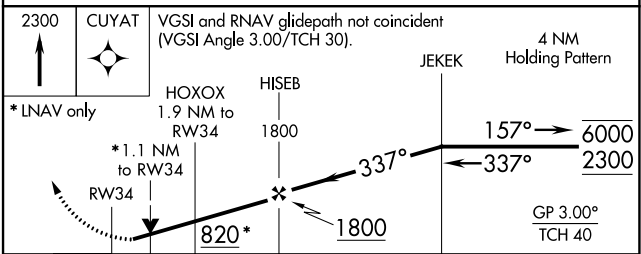
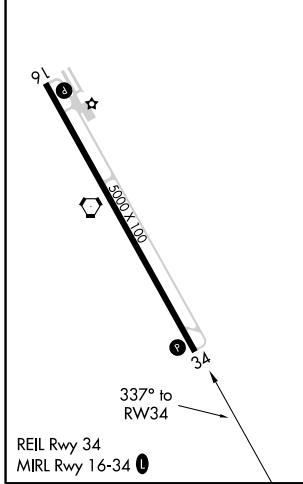
BACON COUNTY (AMG)

RNP APCH.	MISSED APPROACH: Climb to 2300 direct CUYAT and hold.
<p>▼ Rwy 34 helicopter visibility reduction below ¼ SM NA. ▲ For uncompensated Baro-VNAV systems, LNAV/VNAV NA below -4°C or above 54°C.</p>	

ASOS 118.325	JACKSONVILLE CENTER 127.575 269.025	UNICOM 122.7 (CTAF) 1
------------------------	---	---------------------------------



ELEV 200	TDZE 196
----------	----------



3000	CUYAT	VGSI and RNAV glidepath not coincident (VGSI Angle 3.00°/TCH 30).			
*LNAV only	HOXOX 1.9 NM to RW34	HISEB 1800	JEKEK	4 NM Holding Pattern	
	RW34	820*	1800	157° → 6000	← 337° 2300
	1.1	0.8	3.1 NM	6.9 NM	GP 3.00° TCH 40
CATEGORY	A	B	C	D	
LPV DA	452-¾		256 (300-¾)		
LNAV/VNAV DA	459-⅞		263 (300-⅞)		
LNAV MDA	560-1		364 (400-1)		
<input checked="" type="checkbox"/> CIRCLING	720-1	520 (600-1)	1000-2¼ 800 (800-2¼)	1000-2½ 800 (800-2½)	

SE-4, 10 SEP 2020 to 08 OCT 2020

SE-4, 10 SEP 2020 to 08 OCT 2020