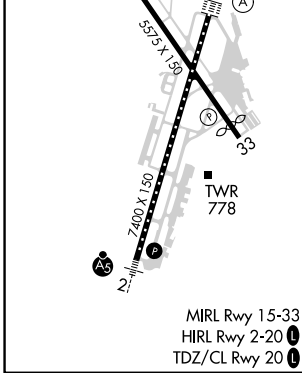
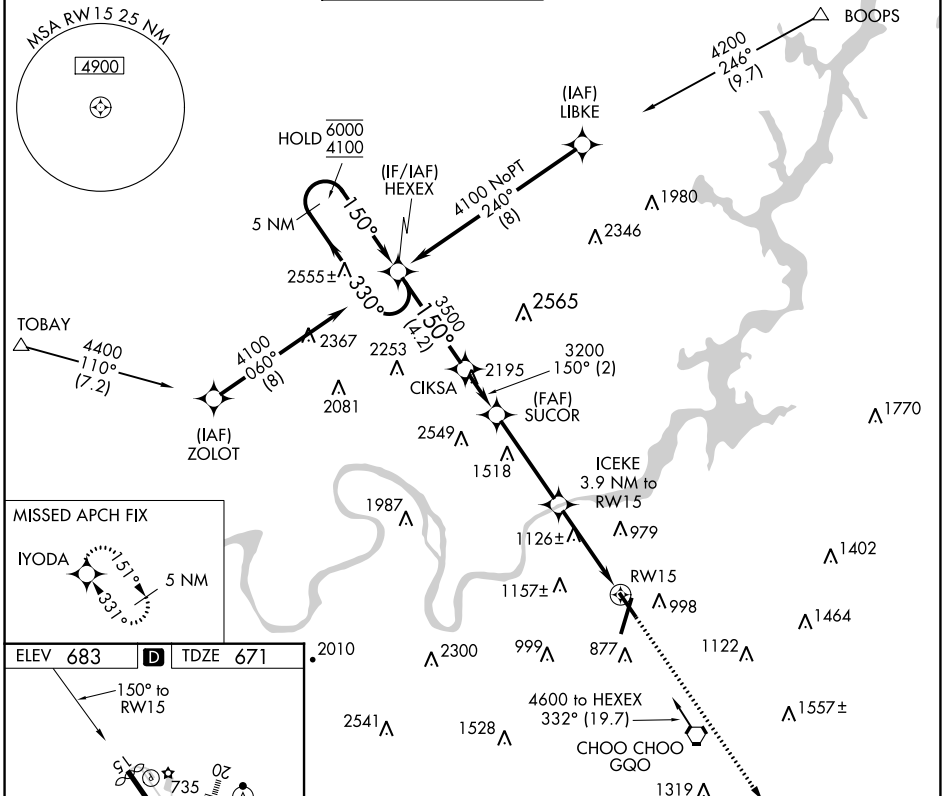


APP CRS	Rwy ldg	<b>5469</b>
<b>150°</b>	TDZE	<b>671</b>
	Apt Elev	<b>683</b>

# RNAV (GPS) RWY 15

LOVELL FIELD (CHA)

RNP APCH.		Straight-In Rwy 15 NA at night, Circling Rwy 15, 33 NA at night. Rwy 15 helicopter visibility reduction below 1 SM NA.		MISSED APPROACH: Climb to 3300 direct IYODA and hold.	
ATIS	CHATTANOOGA APP CON *	CHATTANOOGA TOWER *	GND CON	CLNC DEL	UNICOM
<b>119.85</b>	<b>125.1 379.1</b>	<b>118.3 (CTAF) 257.8</b>	<b>121.7 348.6</b>	<b>120.95 348.6</b>	<b>122.95</b>



ELEV	<b>683</b>	TDZE	<b>671</b>																														
<table border="1"> <tr> <td>5 NM Holding Pattern</td> <td>HEXEX</td> <td>CIKSA</td> <td>SUCOR</td> <td>ICEKE</td> <td>RW15</td> </tr> <tr> <td>6000 ← 330°</td> <td>4100 → 150°</td> <td>3500</td> <td>3200</td> <td>1960</td> <td></td> </tr> <tr> <td colspan="2"></td> <td colspan="2">4.2 NM</td> <td colspan="2">2 NM</td> </tr> <tr> <td colspan="2"></td> <td colspan="2">3.9 NM</td> <td colspan="2">3.9 NM</td> </tr> <tr> <td colspan="2"></td> <td colspan="2">TCH 45</td> <td colspan="2"></td> </tr> </table>				5 NM Holding Pattern	HEXEX	CIKSA	SUCOR	ICEKE	RW15	6000 ← 330°	4100 → 150°	3500	3200	1960				4.2 NM		2 NM				3.9 NM		3.9 NM				TCH 45			
5 NM Holding Pattern	HEXEX	CIKSA	SUCOR	ICEKE	RW15																												
6000 ← 330°	4100 → 150°	3500	3200	1960																													
		4.2 NM		2 NM																													
		3.9 NM		3.9 NM																													
		TCH 45																															
<table border="1"> <tr> <td>3300</td> <td>IYODA</td> </tr> <tr> <td>↑</td> <td>✧</td> </tr> </table>		3300	IYODA	↑	✧																												
3300	IYODA																																
↑	✧																																
CATEGORY	A	B	C	D																													
LNAV MDA	1380-1	709 (700-1)	1380-2	709 (700-2)																													
CIRCLING	1380-1	697 (700-1)	1480-2¼ 797 (800-2¼)	1580-3 897 (900-3)																													

SE-1, 10 SEP 2020 to 08 OCT 2020

SE-1, 10 SEP 2020 to 08 OCT 2020