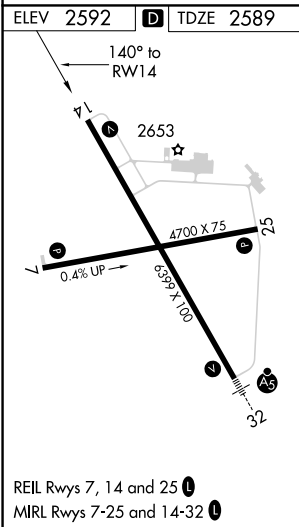
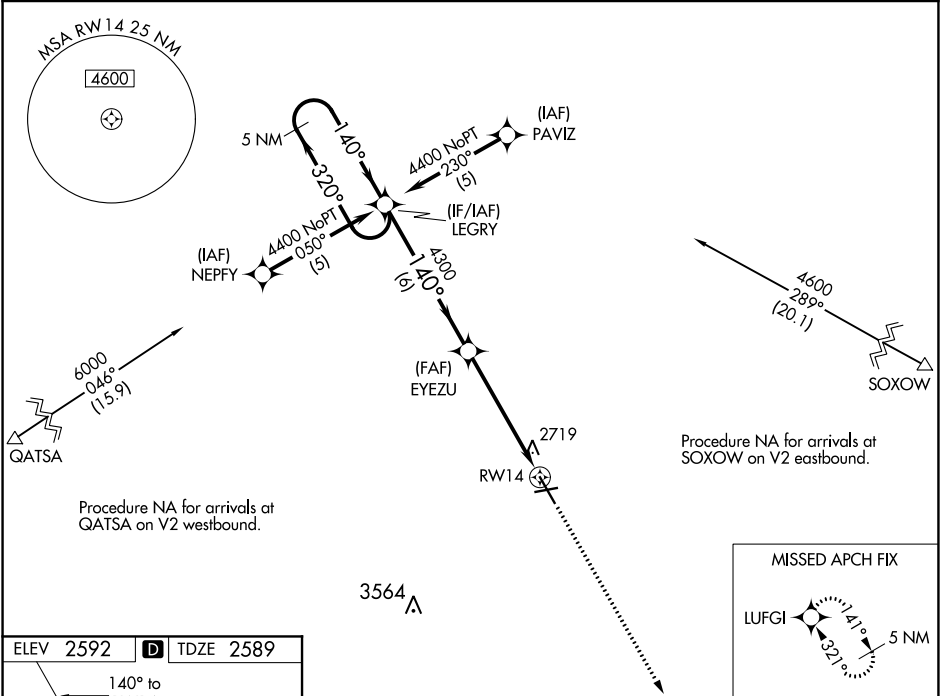


WAAS CH 56211 W14A	APP CRS 140°	Rwy ldg 6399 TDZE 2589 Apt Elev 2592
--	------------------------	---

RNAV (GPS) RWY 14

DICKINSON-THEODORE ROOSEVELT RGNL (DIK)

<p>⚠ DME/DME RNP-0.3 NA. Baro-VNAV NA below -20°C (-4°F). VDP and Baro-VNAV NA when using Bowman Mini altimeter setting. When local altimeter not received, use Bowman altimeter setting and increase all DAs/MDAs 280 feet, ⚠ -30°C increase Circling Cat C visibility ½ SM, Cat D visibility 1 SM.</p>	<p>MISSED APPROACH: Climb to 5000 direct LUFGI and hold.</p>	
<p>ASOS 118.375</p>	<p>MINNEAPOLIS CENTER 124.25 236.825</p>	<p>UNICOM 123.0 (CTAF) 0</p>



<p>5 NM Holding Pattern</p> <p>LEGRY</p> <p>EYEZU</p> <p>4400 ← 320°</p> <p>→ 140°</p> <p>GP 3.00°</p> <p>TCH 40</p> <p>6 NM</p> <p>4 NM</p> <p>1.2</p> <p>RWY 14</p> <p>*1.2 NM to RWY 14</p> <p>*RNAV only.</p>	<p>5000</p> <p>LUFGI</p>																									
<table border="1"> <thead> <tr> <th>CATEGORY</th> <th>A</th> <th>B</th> <th>C</th> <th>D</th> </tr> </thead> <tbody> <tr> <td>LPV DA</td> <td colspan="4">2840-1 251 (300-1)</td> </tr> <tr> <td>LNAV/VNAV DA</td> <td colspan="4">3060-1¾ 471 (500-1¾)</td> </tr> <tr> <td>LNAV MDA</td> <td>3020-1</td> <td>431 (500-1)</td> <td>3020-1¼ 431 (500-1¼)</td> <td>3020-1½ 431 (500-1½)</td> </tr> <tr> <td>C CIRCLING</td> <td>3080-1¾ 488 (500-1¾)</td> <td>3100-1¾ 508 (600-1¾)</td> <td>3120-1¾ 528 (600-1¾)</td> <td>3220-2 628 (700-2)</td> </tr> </tbody> </table>	CATEGORY	A	B	C	D	LPV DA	2840-1 251 (300-1)				LNAV/VNAV DA	3060-1¾ 471 (500-1¾)				LNAV MDA	3020-1	431 (500-1)	3020-1¼ 431 (500-1¼)	3020-1½ 431 (500-1½)	C CIRCLING	3080-1¾ 488 (500-1¾)	3100-1¾ 508 (600-1¾)	3120-1¾ 528 (600-1¾)	3220-2 628 (700-2)	
CATEGORY	A	B	C	D																						
LPV DA	2840-1 251 (300-1)																									
LNAV/VNAV DA	3060-1¾ 471 (500-1¾)																									
LNAV MDA	3020-1	431 (500-1)	3020-1¼ 431 (500-1¼)	3020-1½ 431 (500-1½)																						
C CIRCLING	3080-1¾ 488 (500-1¾)	3100-1¾ 508 (600-1¾)	3120-1¾ 528 (600-1¾)	3220-2 628 (700-2)																						

NC-1, 10 SEP 2020 to 08 OCT 2020

NC-1, 10 SEP 2020 to 08 OCT 2020