

WAAS CH <b>45512</b> <b>W32A</b>	APP CRS <b>320°</b>	Rwy ldg <b>6399</b> TDZE <b>2591</b> Apt Elev <b>2592</b>
--	------------------------	---

# RNAV (GPS) RWY 32

DICKINSON-THEODORE ROOSEVELT RGNL (DIK)

**RNP APCH**

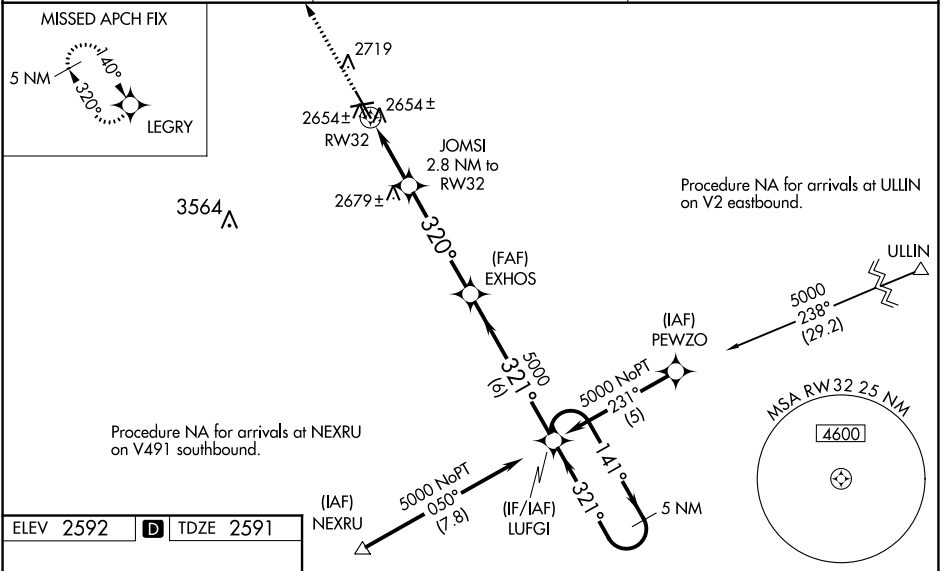
**▽** For uncompensated Baro-VNAV systems, LNAV/VNAV NA below -20°C (-4°F) or above 44°C (111°F). When local altimeter setting not received, use Bowman altimeter setting and increase all DA 266 feet, all MDA 280 feet, increase LPV all Cats visibility 1/2 SM, LNAV/VNAV Cats A/B/C visibility 1 SM, Cat D visibility 3/4 SM, LNAV Cats C/D visibility 3/4 SM, Circling Cat C visibility 3/4 SM, Cat D visibility 1 SM. For inop ALS when using Bowman altimeter setting, increase LPV all Cats visibility to 1 1/2 SM, LNAV/VNAV all Cats visibility to 2 SM, LNAV Cat C visibility to 2 SM and Cat D visibility to 2 1/4 SM. For inop ALS, increase LNAV/VNAV Cat D visibility to 1 SM and LNAV Cat D visibility to 1 1/4 SM. VDP and Baro-VNAV NA when using Bowman altimeter setting.

**▲** MISSED APPROACH: Climb to 5000 direct LEGRY and hold.

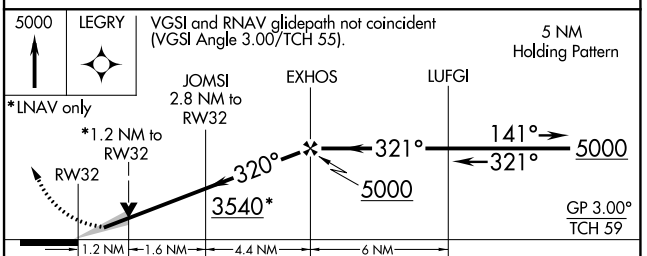
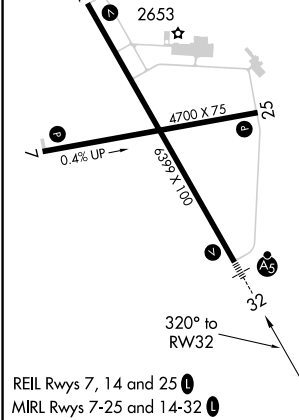
**⊗** -30°C

**MALSRL**

ASOS <b>118.375</b>	MINNEAPOLIS CENTER <b>124.25 236.825</b>	UNICOM <b>123.0 (CTAF) 1</b>
------------------------	---	---------------------------------



ELEV 2592	<b>D</b>	TDZE 2591
-----------	----------	-----------



CATEGORY	A	B	C	D
LPV DA	2791-1/2 200 (200-1/2)			
LNAV/VNAV DA	2924-1/2 333 (400-1/2)			2924-3/4 333 (400-3/4)
LNAV MDA	3000-1/2 409 (500-1/2)	3000-3/4 409 (500-3/4)	3000-1 409 (500-1)	3000-1 409 (500-1)
<b>C</b> CIRCLING	3080-1 488 (500-1)	3100-1 508 (600-1)	3120-1/2 528 (600-1/2)	3220-2 628 (700-2)

NC-1, 10 SEP 2020 to 08 OCT 2020

NC-1, 10 SEP 2020 to 08 OCT 2020