

WAAS CH 70438 W18A	APP CRS 182°	Rwy Idg TDZE Apt Elev	6001 110 110
--	------------------------	-----------------------------	---

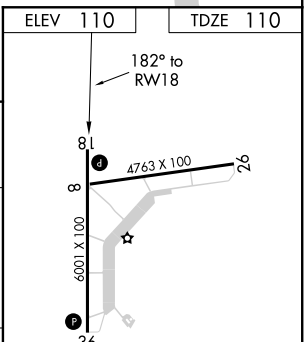
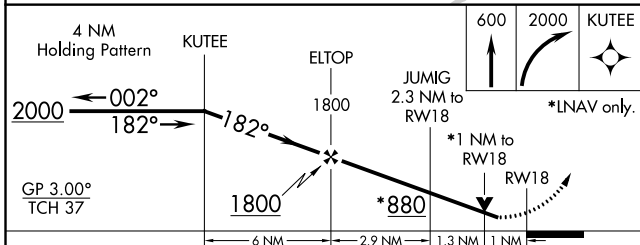
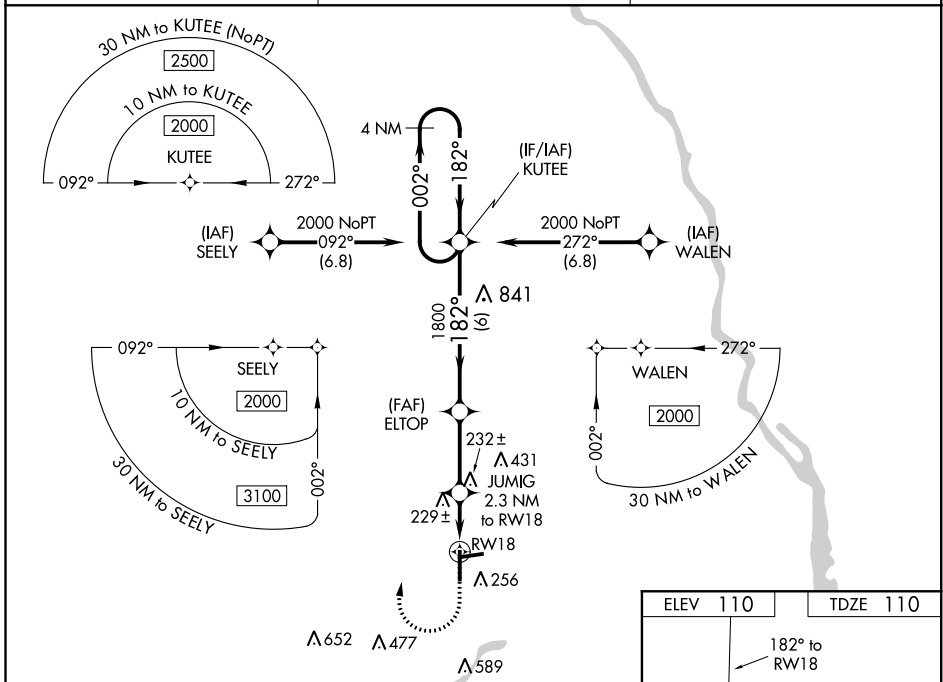
RNAV (GPS) RWY 18

MARIANNA MUNI (MAI)

⚠ Night landing: Rwy 26 NA. For uncompensated Baro-VNAV systems, LNAV/VNAV NA below -5°C (23°F) or above 54°C (130°F). Baro-VNAV and VDP NA when using Bainbridge altimeter setting. DME/DME RNP-0.3 NA. Helicopter visibility reduction below 3/4 SM NA. When local altimeter setting not received, use Bainbridge altimeter setting and increase all DA 72 feet and all MDA 80 feet; increase LPV and LNAV/VNAV all Cats and Circling Cat D visibility 1/4 mile and LNAV Cats C/D visibility 3/8 mile.

MISSED APPROACH:
Climb to 600 then climbing right turn to 2000 direct KUTEE and hold.

ASOS 133.525	CAIRNS APP CON ★ 133.75 270.35	UNICOM 123.0 (CTAF) 0
------------------------	--	---------------------------------



CATEGORY	A	B	C	D
LPV DA		360-7/8	250 (300-7/8)	
LNAV/VNAV DA		500-13/8	390 (400-13/8)	
LNAV MDA		480-1	370 (400-1)	
C CIRCLING	620-1	510 (600-1)	620-1 1/2 510 (600-1 1/2)	900-2 1/2 790 (800-2 1/2)

MIRL Rwy 18-36 0

SE-3, 10 SEP 2020 to 08 OCT 2020

SE-3, 10 SEP 2020 to 08 OCT 2020