


LOC I-MSL 109.7	APP CRS 297°	Rwy Idg TDZE Apt Elev	6694 551 551
---------------------------	------------------------	-----------------------------	---

ILS Z or LOC Z RWY 30

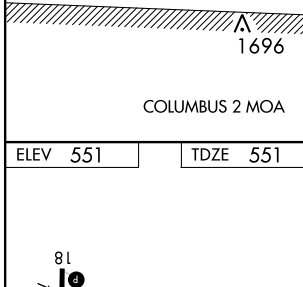
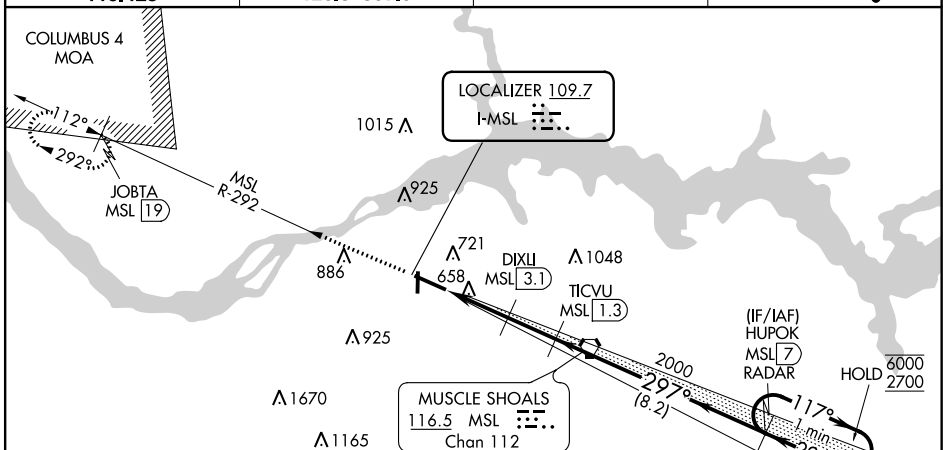
NORTHWEST ALABAMA RGNL (MSL)

DME required. RADAR required for procedure entry.

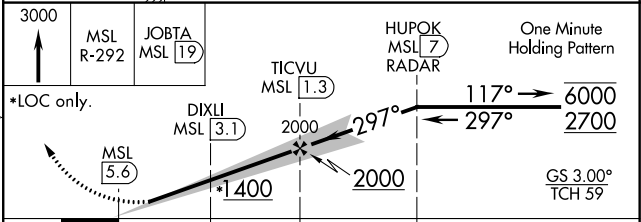
⚠ When local altimeter setting not received, use Decatur altimeter setting: Increase DA to 833 feet and all MDA 100 feet; Increase S-LOC 30 Cat C, D visibility ¾ SM and Circling Cat C, D visibility ½ SM. DME from MSL VORTAC. Simultaneous reception of I-MSL and MSL DME required. For inop ALS increase S-LOC 30 Cats C/D visibility to 1 SM. For inop ALS when using Decatur altimeter setting, increase S-ILS 30 all Cats visibility to ¾ SM, and increase S-LOC 30 Cats C/D to 1 ¾ SM.

MALSR  MISSED APPROACH: Climb to 3000 on MSL VORTAC R-292 to JOBTA/MSL VORTAC 19 DME and hold.

ASOS 119.425	MEMPHIS CENTER 120.8 307.0	GCO 121.725	UNICOM 123.05 (CTAF) 0
------------------------	--------------------------------------	-----------------------	----------------------------------



ELEV 551	TDZE 551
REIL Rwy 12-14	MIRL Rwy 18-36
HIRL Rwy 12-30	



CATEGORY	A	B	C	D
S-ILS 30	751-½		200 (200-½)	
S-LOC 30	920-½	369 (400-½)	920-⅝	369 (400-⅝)
C CIRCLING	1040-1	489 (500-1)	1280-2 729 (800-2)	1280-2¼ 729 (800-2¼)

SE-4, 10 SEP 2020 to 08 OCT 2020

SE-4, 10 SEP 2020 to 08 OCT 2020