

LOC/DME I-GDI 108.5 Chan 22	APP CRS 134°	Rwy Idg TDZE 12 Apt Elev 21	7003
---	------------------------	---	-------------

COPTER ILS or LOC RWY 13

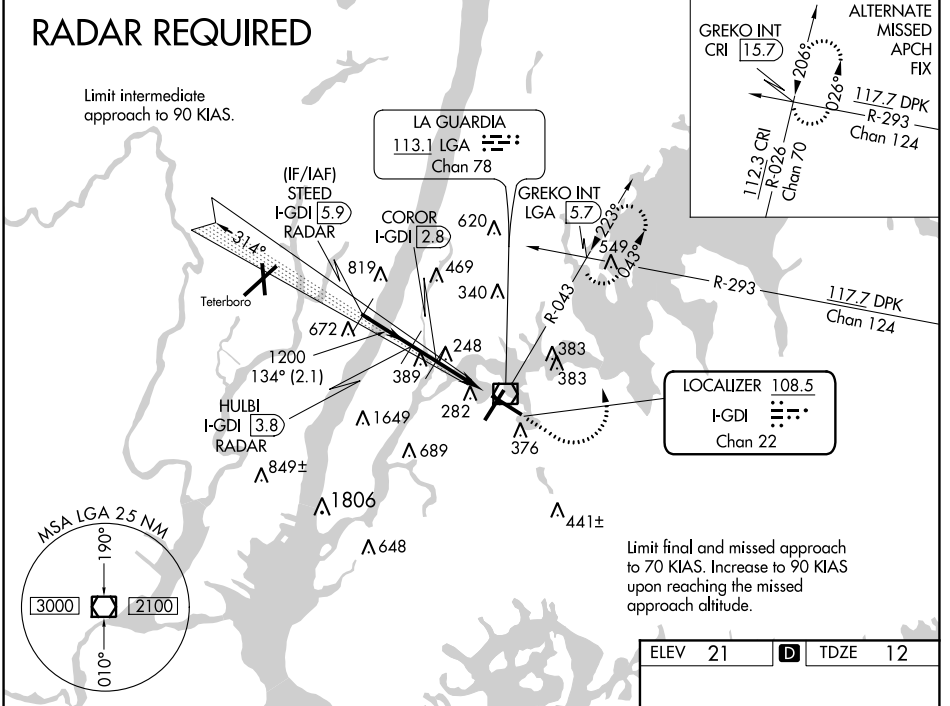
LAGUARDIA (LGA)

<p>DME or RADAR required.</p>	<p>MALS</p>	MISSED APPROACH: Climb to 800 then climbing left turn to 2000 via LGA VOR/DME R-043 to GREKO INT/ LGA 5.7 DME and hold.			

D-ATIS ARR 125.95 D-ATIS DEP 127.05	NEW YORK APP CON 120.8 263.0	LAGUARDIA TOWER 118.7 263.0	GND CON 121.7 263.0	CLNC DEL 135.2 121.875 (COPTER)	CPDLC
--	--	---------------------------------------	-------------------------------	---	-------

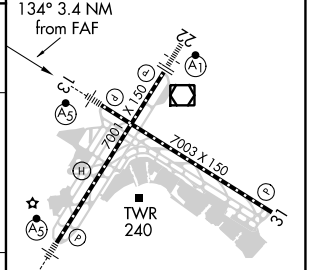
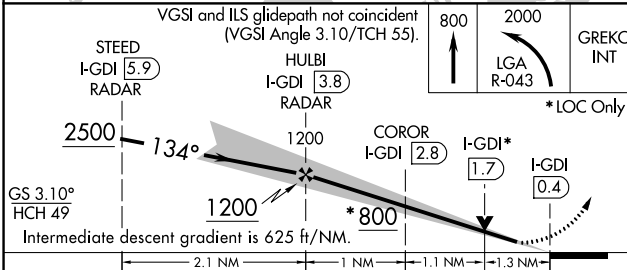
RADAR REQUIRED

Limit intermediate approach to 90 KIAS.



Limit final and missed approach to 70 KIAS. Increase to 90 KIAS upon reaching the missed approach altitude.

ELEV 21	D TDZE 12
----------------	-------------------------



CATEGORY	COPTER	B	C	D
H-ILS 13	212/12 200 (200-1/4)		NA	
H-LOC 13	800/12 788 (800-1/4)		NA	
COROR FIX MINIMUMS				
H-LOC 13	500/12 488 (500-1/4)		NA	

FAF to MAP 3.4 NM					
Knots	45	60	75	90	105
Min:Sec	4:32	3:24	2:43	2:16	1:57

NE-2, 10 SEP 2020 to 08 OCT 2020

NE-2, 10 SEP 2020 to 08 OCT 2020