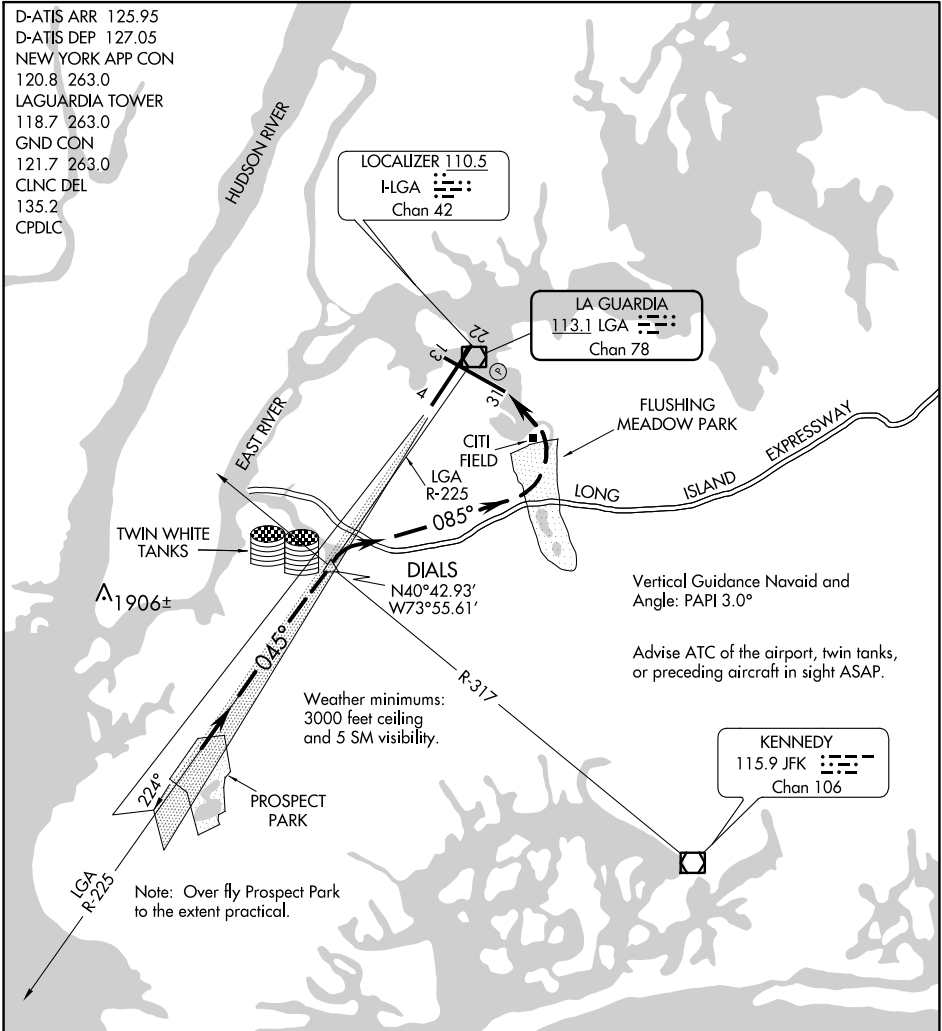


# EXPRESSWAY VISUAL RWY 31

AL-289 (FAA)

LAGUARDIA (LGA)  
NEW YORK, NEW YORK

D-ATIS ARR 125.95  
 D-ATIS DEP 127.05  
 NEW YORK APP CON  
 120.8 263.0  
 LAGUARDIA TOWER  
 118.7 263.0  
 GND CON  
 121.7 263.0  
 CLNC DEL  
 135.2  
 CPDLC



NE-2, 10 SEP 2020 to 08 OCT 2020

NE-2, 10 SEP 2020 to 08 OCT 2020

Vertical Guidance Navaid and Angle: PAPI 3.0°

Advise ATC of the airport, twin tanks, or preceding aircraft in sight ASAP.

Weather minima:  
3000 feet ceiling  
and 5 SM visibility.

Note: Over fly Prospect Park to the extent practical.

1	2	3	4	5	6	7	8	9	10	11	12	13	14	15	16
---	---	---	---	---	---	---	---	---	----	----	----	----	----	----	----

## EXPRESSWAY VISUAL RWY 31

When cleared for an Expressway Approach to Rwy 31 (while on LGA VOR/DME R-225) cross DIALS INT at 2500 feet or above. Turn right at DIALS INT heading 085° and descend to Runway 31 via Long Island Expressway and Flushing Meadow Park. Use LGA Rwy 4 localizer for course guidance when LGA VOR is not available.

# EXPRESSWAY VISUAL RWY 31

40°47'N-73°52'W

NEW YORK, NEW YORK  
LAGUARDIA (LGA)