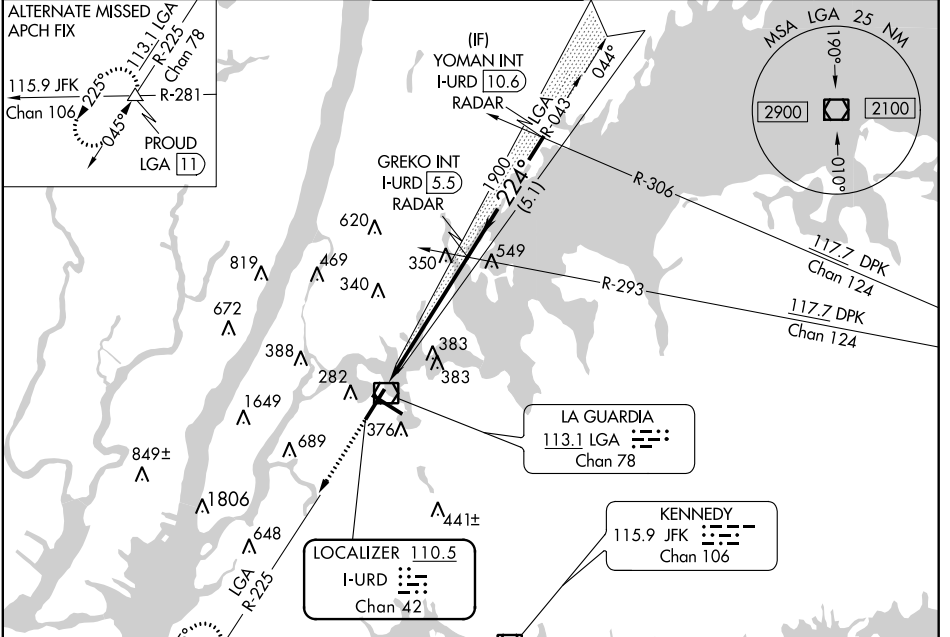


LOC/DME I-URD 110.5 Chan 42	APP CRS 224°	Rwy Idg 7001 TDZE 12 Apt Elev 21
---	------------------------	---

ILS RWY 22 (SA CAT I & II) LAGUARDIA (LGA)

RADAR required for procedure entry.		ALSF-1 	MISSED APPROACH: Climb to 3000 on LGA VOR/DME R-225 to PROUD INT/LGA11 DME and hold, continue climb-in-hold to 3000.
<p>▽ SA CAT I: Requires specific OPSPEC, MSPEC or LOA approval and use of HUD to DH. SA CAT II: Reduced lighting: Requires specific OPSPEC, MSPEC, or LOA approval and use of autoland or HUD to touchdown.</p>			

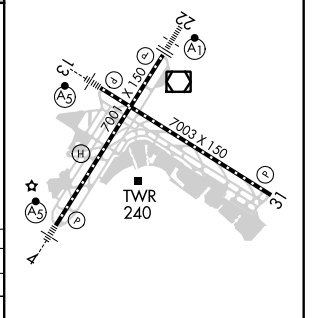
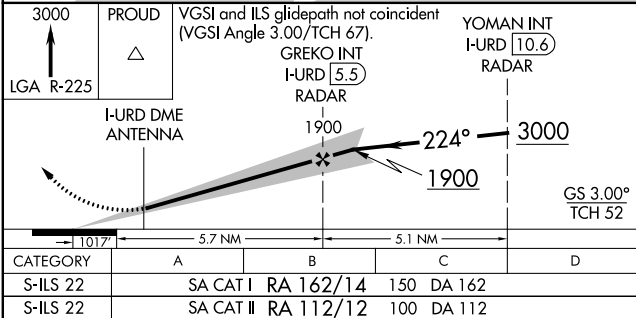
D-ATIS ARR 125.95	NEW YORK APP CON	LAGUARDIA TOWER	GND CON	CLNC DEL	CPDLC
D-ATIS DEP 127.05	120.8 263.0	118.7 263.0	121.7 263.0	135.2	



NE-2, 10 SEP 2020 to 08 OCT 2020

NE-2, 10 SEP 2020 to 08 OCT 2020

ELEV 21	D	TDZE 12
----------------	----------	----------------



CATEGORY	A	B	C	D
S-ILS 22	SA CAT I RA 162/14	150	DA 162	
S-ILS 22	SA CAT II RA 112/12	100	DA 112	

TDZ/CL Rws 4, 13 and 22
HIRL Rws 4-22 and 13-31
REIL Rwy 31