

ILS or LOC RWY 22

LAGUARDIA (LGA)

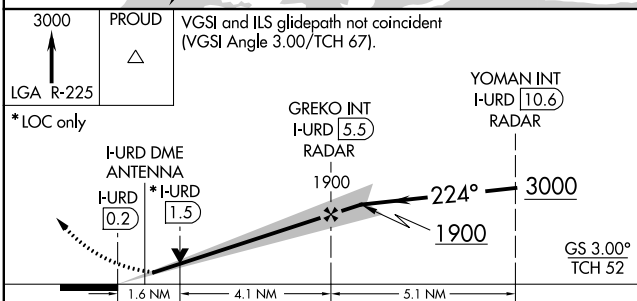
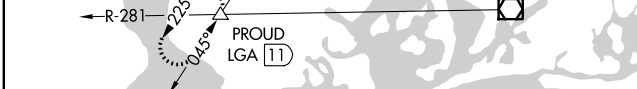
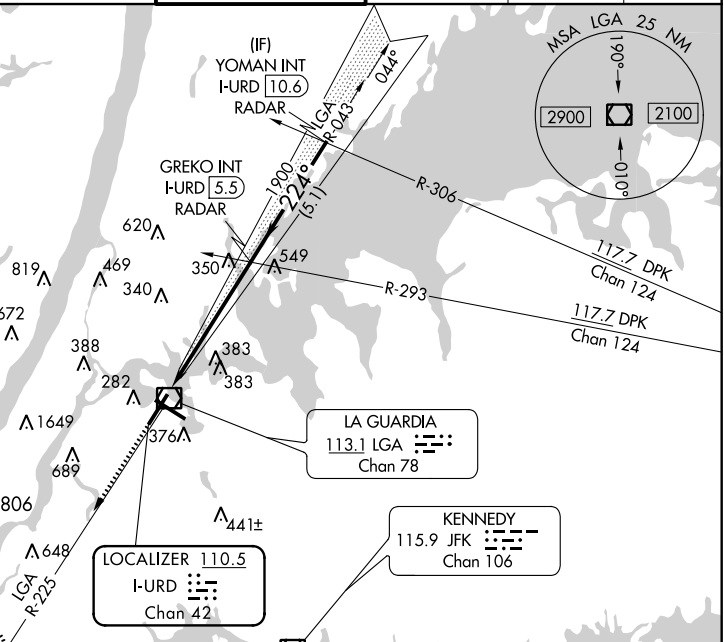
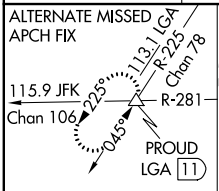
LOC/DME I-URD 110.5 Chan 42	APP CRS 224°	Rwy Idg TDZE 12 Apt Elev 21	7001
---	------------------------	---	-------------

RADAR required for procedure entry. RADAR or DME required for LOC only.

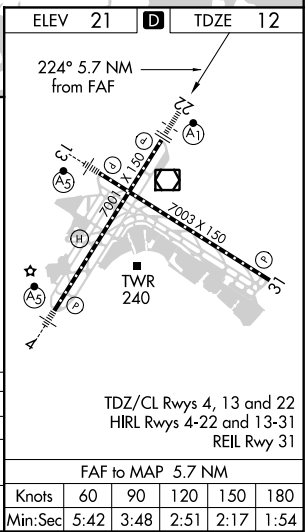


MISSED APPROACH: Climb to 3000 on LGA VOR/DME R-225 to PROUD INT/LGA 1.1 DME and hold, continue climb-in-hold to 3000.

D-ATIS ARR 125.95	NEW YORK APP CON	LAGUARDIA TOWER	GND CON	CLNC DEL	CPDLC
D-ATIS DEP 127.05	120.8 263.0	118.7 263.0	121.7 263.0	135.2	



CATEGORY	A	B	C	D
S-ILS 22	212/18		200 (200-½)	
S-LOC 22	600/24 588 (600-½)		600-1¼ 588 (600-1¼)	
CIRCLING	700-1 679 (700-1)		1080-3 1260-3 1059 (1100-3) 1239 (1300-3)	



LAGUARDIA (LGA)

ILS or LOC RWY 22

NE-2, 10 SEP 2020 to 08 OCT 2020

NE-2, 10 SEP 2020 to 08 OCT 2020

ELEV 21	TDZE 12
224° 5.7 NM from FAF	
TWR 240	
TDZ/CL Rwy 4, 13 and 22	
HIRL Rwy 4-22 and 13-31	
REIL Rwy 31	
FAF to MAP 5.7 NM	
Knots	60 90 120 150 180
Min:Sec	5:42 3:48 2:51 2:17 1:54