

LOC/DME I-LGA	APP CRS	Rwy Idg	7001
110.5	044°	TDZE	21
Chan 42		Apt Elev	21

ILS or LOC RWY 4

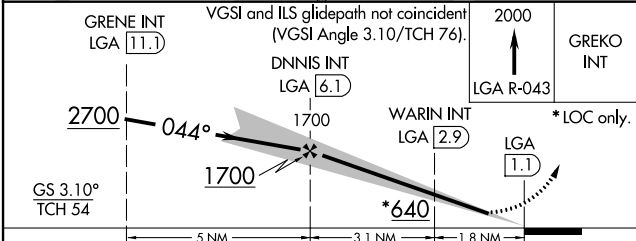
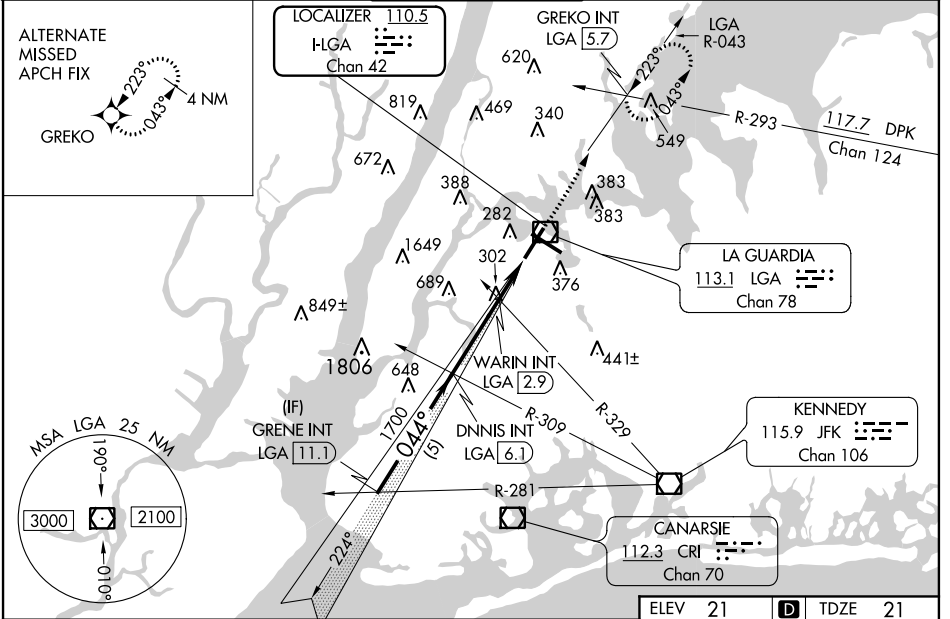
LAGUARDIA (LGA)

RADAR required for procedure entry.

▼ Rwy 4 helicopter visibility reduction below RVR 5000 NA. For inop ALS increase S-ILS 4 all Cats visibility to RVR 4500. Inop table does not apply to S-LOC 4 Cats A and B and WARIN fix minimums S-LOC 4 Cats A and B. Going below glidepath may not provide obstacle clearance inside DA. Crossing Rwy threshold below charted TCH may not provide required visual area obstacle clearance. DME from LGA VOR/DME. Autopilot coupled approach NA.

⚠ MISSED APPROACH: Climb to 2000 on LGA VOR/DME R-043 to GREKO INT/LGA 5.7 DME and hold, continue climb-in-hold to 2000.

D-ATIS ARR 125.95	NEW YORK APP CON	LAGUARDIA TOWER	GND CON	CLNC DEL	CPDLC
D-ATIS DEP 127.05	120.8 263.0	118.7 263.0	121.7 263.0	135.2	



ELEV 21	D	TDZE 21
TDZ/CL Rws 4, 13 and 22 HIRL Rws 4-22 and 13-31 REIL Rwy 31		
FAF to MAP 4.9 NM		
Knots	60	90 120 150 180
Min:Sec	4:54	3:16 2:27 1:58 1:38

CATEGORY	A	B	C	D
S-ILS 4	305/40 284 (300-¾)			
S-LOC 4	640/50	619 (700-1)	640-1⅓	619 (700-1⅓)
CIRCLING	700-1	679 (700-1)	1080-3 1059 (1100-3)	1260-3 1239 (1300-3)
WARIN FIX MINIMUMS (DUAL VOR RECEIVERS OR DME REQUIRED)				
S-LOC 4	560/50	539 (600-1)	560/55	539 (600-1)
CIRCLING	700-1	679 (700-1)	1080-3 1059 (1100-3)	1260-3 1239 (1300-3)

NE-2, 10 SEP 2020 to 08 OCT 2020

NE-2, 10 SEP 2020 to 08 OCT 2020