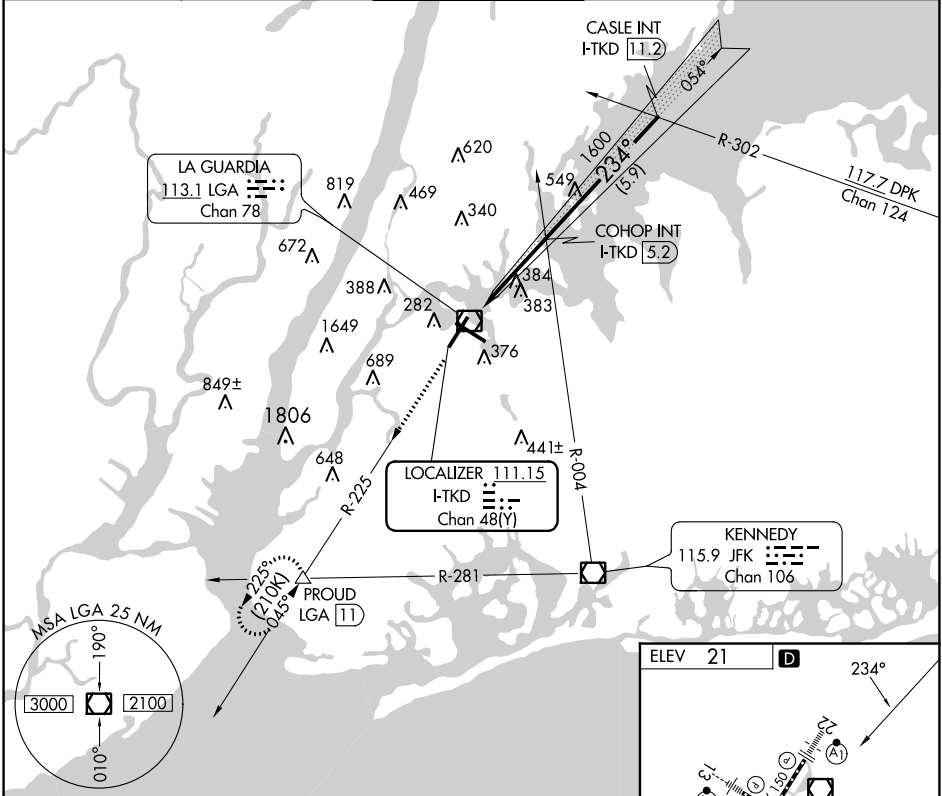


LOC/DME I-TKD 111.15 Chan 48 (Y)	APP CRS 234°	Rwy Idg TDZE Apt Elev	N/A N/A 21
---	------------------------	--------------------------	---------------------------------------

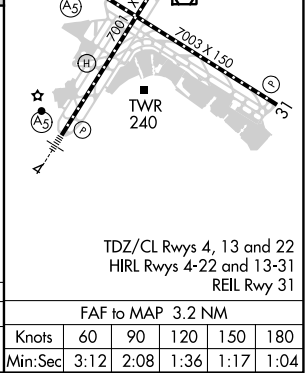
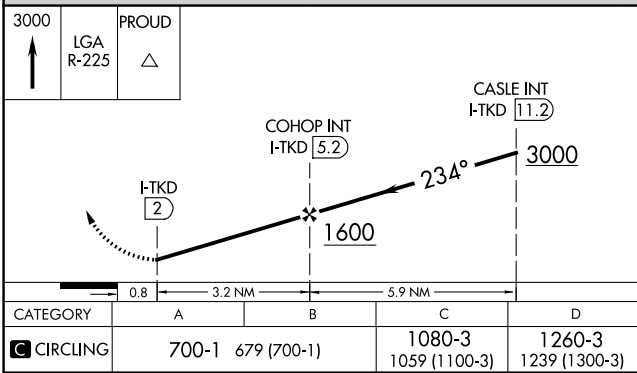
LDA-A
LAGUARDIA (LGA)

RADAR required for procedure entry.		MISSED APPROACH: Climb to 3000 on LGA VOR/DME R-225 to PROUD INT and hold, continue climb-in-hold to 3000.			
▼ ▲ Auto pilot coupled approach NA.					
D-ATIS ARR 125.95 D-ATIS DEP 127.05	NEW YORK APP CON 120.8 263.0	LAGUARDIA TOWER 118.7 263.0	GND CON 121.7 263.0	CLNC DEL 135.2	CPDLC



NE-2, 10 SEP 2020 to 08 OCT 2020

NE-2, 10 SEP 2020 to 08 OCT 2020



CATEGORY	A	B	C	D	FAF to MAP 3.2 NM					
◻ CIRCLING	700-1 679 (700-1)		1080-3 1059 (1100-3)	1260-3 1239 (1300-3)	Knots	60	90	120	150	180
					Min:Sec	3:12	2:08	1:36	1:17	1:04