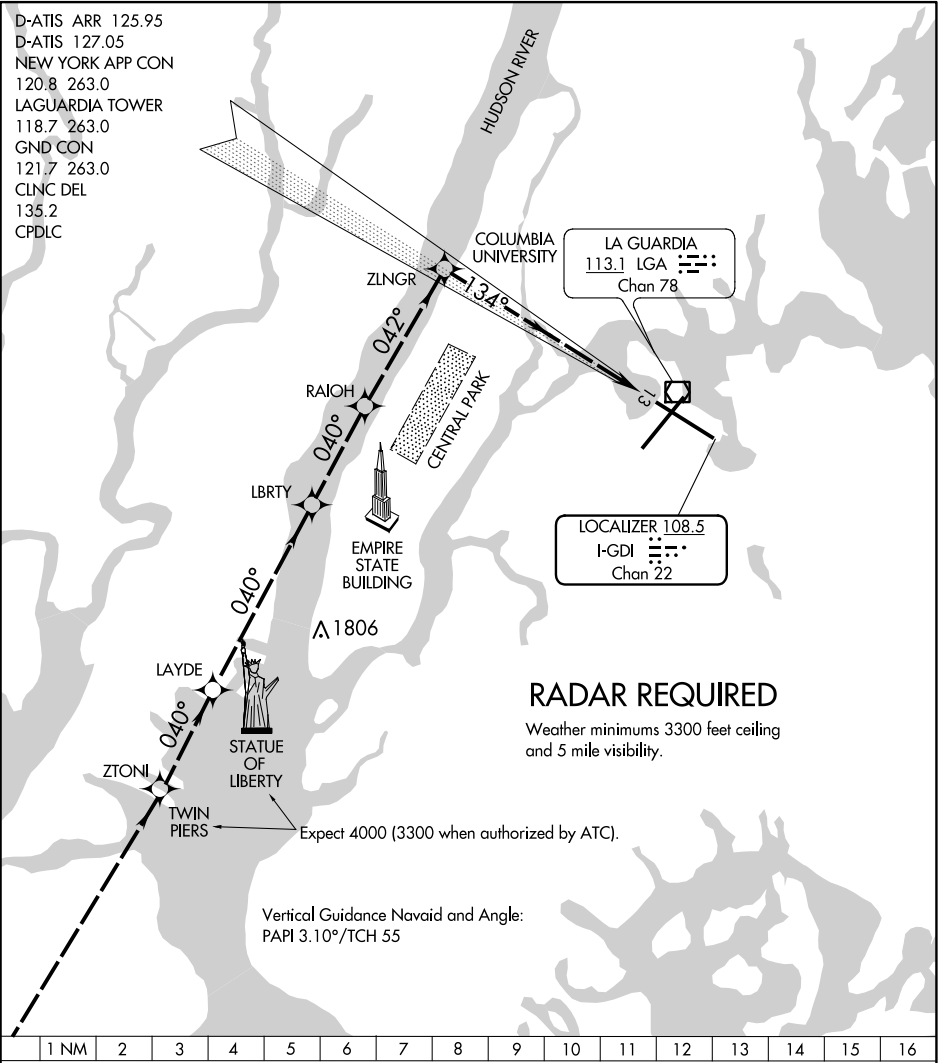


# RIVER VISUAL RWY 13

AL-289 (FAA)

LAGUARDIA (LGA)  
NEW YORK, NEW YORK

D-ATIS ARR 125.95  
 D-ATIS 127.05  
 NEW YORK APP CON  
 120.8 263.0  
 LAGUARDIA TOWER  
 118.7 263.0  
 GND CON  
 121.7 263.0  
 CLNC DEL  
 135.2  
 CPDLC



NE-2, 10 SEP 2020 to 08 OCT 2020

NE-2, 10 SEP 2020 to 08 OCT 2020

## RIVER VISUAL RWY 13 APPROACH

When cleared for a RIVER VISUAL RWY 13 approach, remain over the Hudson River until starting the turn to final approach north of Central Park. Expect 4000 until abeam Statue of Liberty (3300 when authorized by ATC).

# RIVER VISUAL RWY 13

40°47'N-73°52'W

NEW YORK, NEW YORK  
LAGUARDIA (LGA)

Amdt 2A 12SEP19