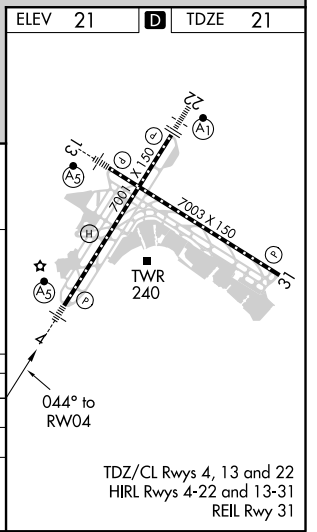
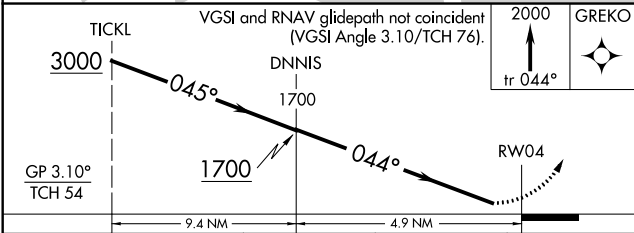
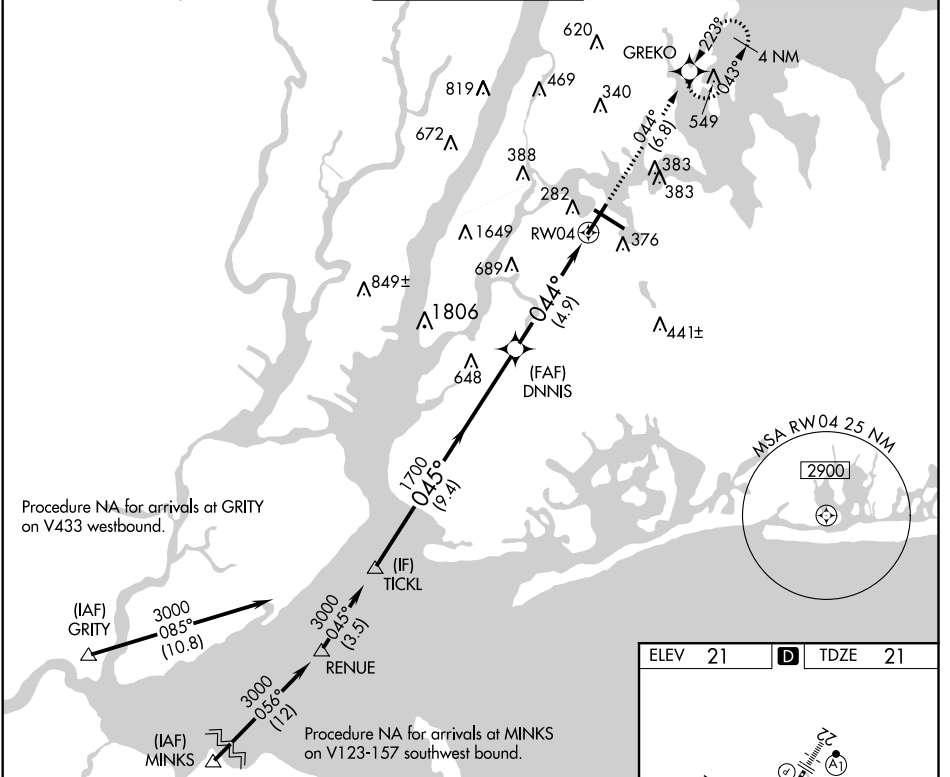


APP CRS	Rwy Idg	7001
044°	TDZE	21
	Apt Elev	21

RNAV (RNP) Z RWY 4

LAGUARDIA (LGA)

RNP AR APCH.	For uncompensated Baro-VNAV systems, procedure NA below -10°C or above 47°C. For inop ALS, increase RNP 0.18 visibility to 1½ SM.			MALSR AS	MISSED APPROACH: Climb to 2000 on track 044° to GREKO and hold.					
D-ATIS ARR	125.95	NEW YORK APP CON	120.8 263.0	LAGUARDIA TOWER	118.7 263.0	GND CON	121.7 263.0	CLNC DEL	135.2	CPDLC
D-ATIS DEP	127.05									



CATEGORY	A	B	C	D
RNP 0.18 DA		469/50	448 (500-1)	
RNP 0.30 DA		604-1¼	583 (600-1¼)	

AUTHORIZATION REQUIRED

NE-2, 10 SEP 2020 to 08 OCT 2020

NE-2, 10 SEP 2020 to 08 OCT 2020