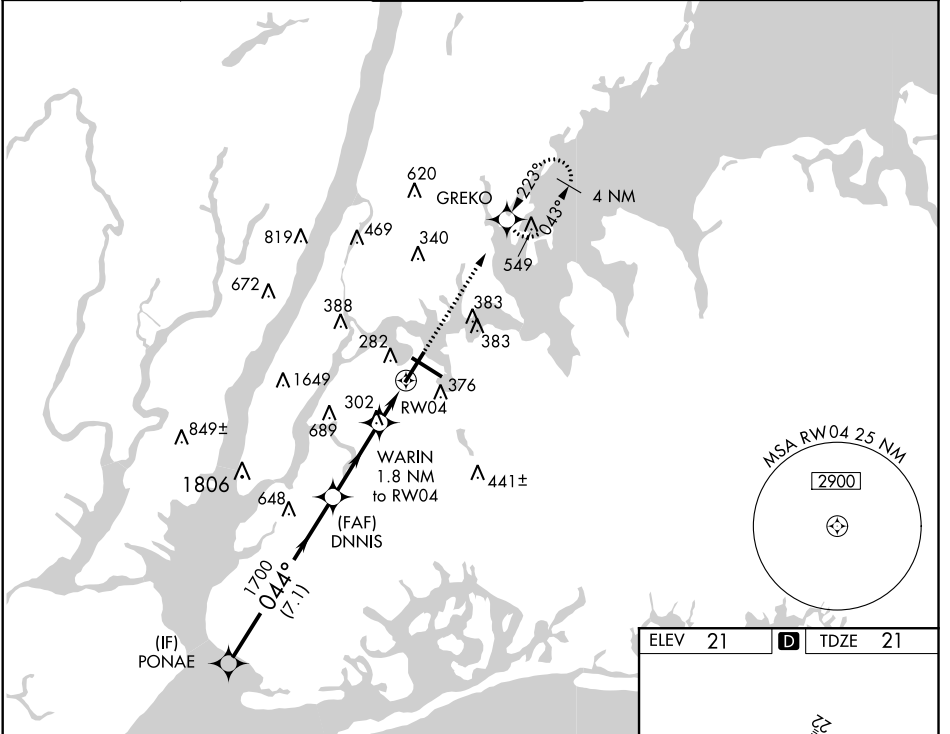


WAAS CH <b>60918</b> <b>W04A</b>	APP CRS <b>044°</b>	Rwy Idg TDZE <b>21</b> Apt Elev <b>21</b>	<b>7001</b>
--	------------------------	---	-------------

# RNAV (GPS) Y RWY 4

LAGUARDIA (LGA)

RNP APCH.		MALSR		MISSED APPROACH: Climb to 2000 direct GREKO and hold, continue climb-in-hold to 2000.	
<p>▼ Inop table does not apply to LPV all Cats and LNAV Cats A and B. For uncompensated Baro-VNAV systems, LNAV/VNAV NA below -11°C (13°F) or above 47°C (118°F). Rwy 4 helicopter visibility reduction below RVR 5000 NA.</p>					
D-ATIS ARR <b>125.95</b>	NEW YORK APP CON	LAGUARDIA TOWER	GND CON	CLNC DEL	CPDLC
D-ATIS DEP <b>127.05</b>	<b>120.8 263.0</b>	<b>118.7 263.0</b>	<b>121.7 263.0</b>	<b>135.2</b>	



NE-2, 10 SEP 2020 to 08 OCT 2020

NE-2, 10 SEP 2020 to 08 OCT 2020

PONA E		VGSi and RNAV glidepath not coincident (VGSi Angle 3.10/TCH 76).		2000	GREKO
3000		DNNIS		↑	☉
GP 3.10° TCH 54		1700		*LNAV only.	
044°		WARIN 1.8 NM to RW04		RW04	
7.1 NM		3.1 NM		1.8 NM	
CATEGORY	A	B	C	D	
LPV DA	271/50			250 (300-1)	
LNAV/VNAV DA	488/55			467 (500-1)	
LNAV MDA	560/50	539 (600-1)	560/55	539 (600-1)	
CIRCLING	700-1	679 (700-1)	1080-3 1059 (1100-3)	1260-3 1239 (1300-3)	

