


VOR/DME LGA	APP CRS	Rwy Idg	<b>7001</b>
<b>113.1</b>	<b>046°</b>	TDZE	<b>21</b>
Chan <b>78</b>		Apt Elev	<b>21</b>

# VOR RWY 4

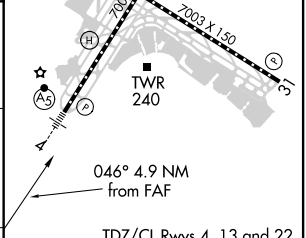
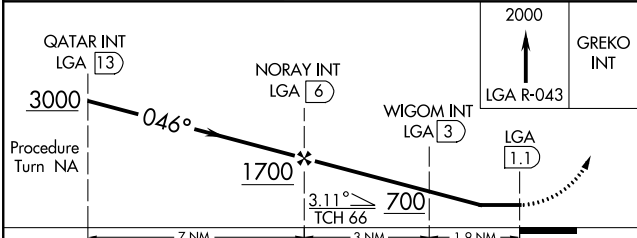
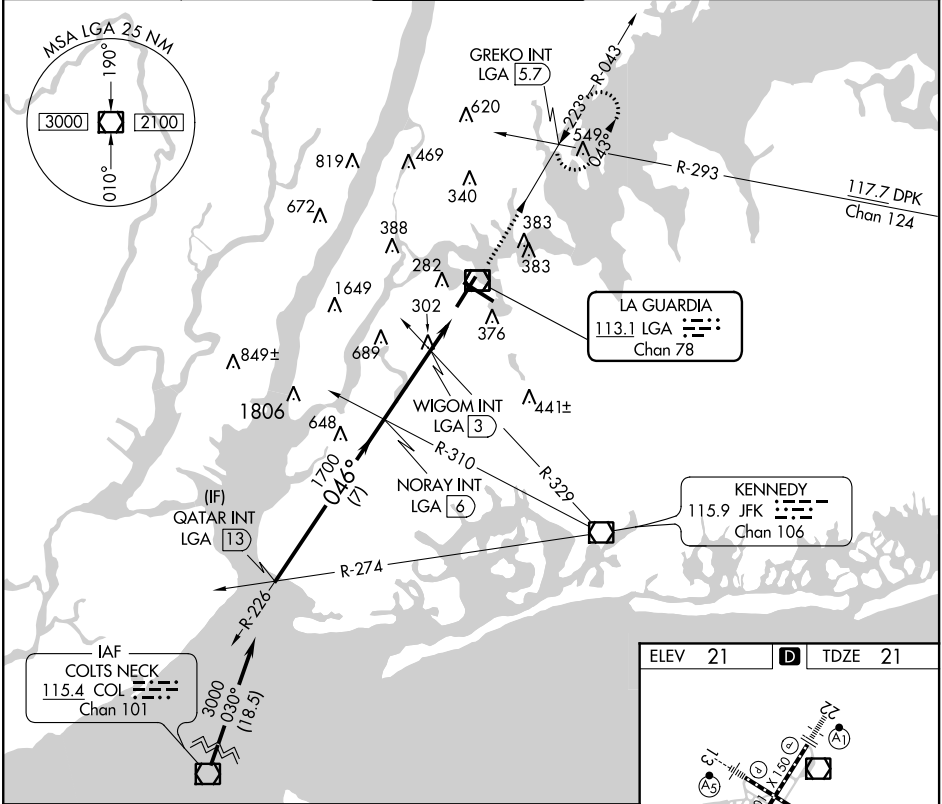
LAGUARDIA (LGA)

**⚠** Inop table does not apply to Cats A and B.

**MALSR** 

**MISSED APPROACH:** Climb to 2000 on LGA VOR/DME R-043 to GREKO INT/LGA 5.7 DME and hold, continue climb-in-hold to 2000.

D-ATIS ARR	<b>125.95</b>	NEW YORK APP CON	<b>120.8 263.0</b>	LAGUARDIA TOWER	<b>118.7 263.0</b>	GND CON	<b>121.7 263.0</b>	CLNC DEL	<b>135.2</b>	CPDLC
D-ATIS DEP	<b>127.05</b>									



CATEGORY	A	B	C	D
S-4	560/50	539 (600-1)		560/60 539 (600-1¼)
<b>C</b> CIRCLING	700-1	679 (700-1)	1080-3 1059 (1100-3)	1260-3 1239 (1300-3)

ELEV	21	TDZE	21
FAF to MAP 4.9 NM			
Knots	60	90	120 150 180
Min:Sec	4:54	3:16	2:27 1:58 1:38

NE-2, 10 SEP 2020 to 08 OCT 2020

NE-2, 10 SEP 2020 to 08 OCT 2020