

RNAV (GPS) RWY 32

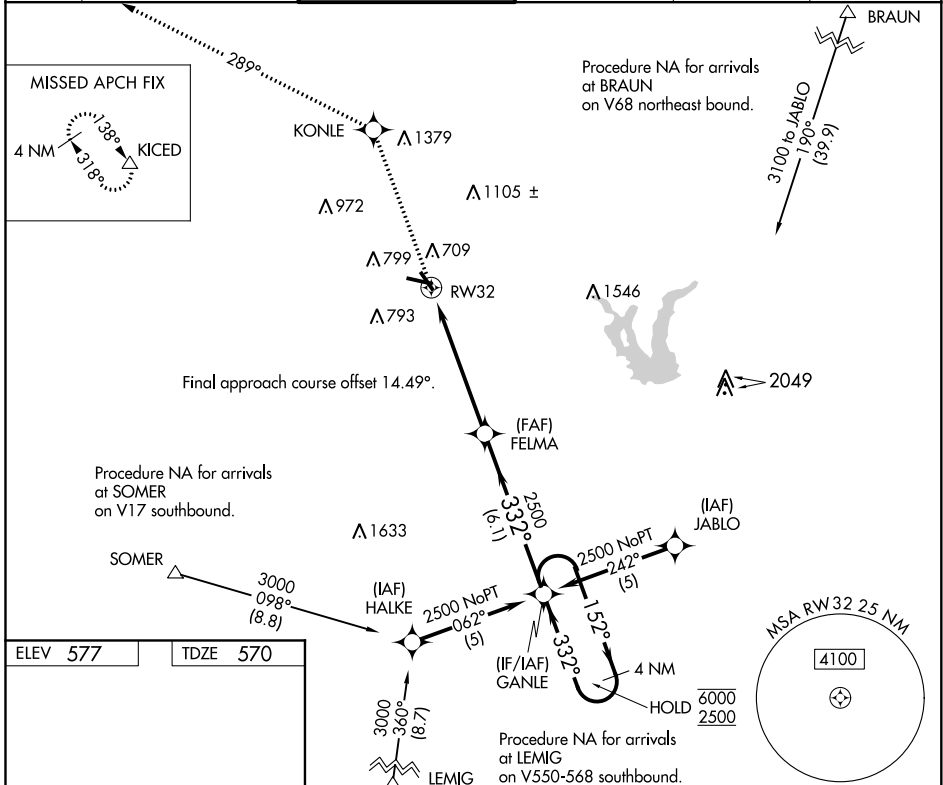
STINSON MUNI (SSF)

APP CRS 332°	Rwy Idg TDZE Apt Elev	3756 570 577
------------------------	-----------------------------	-----------------------------------------

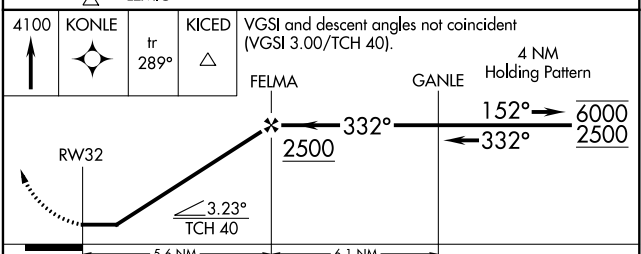
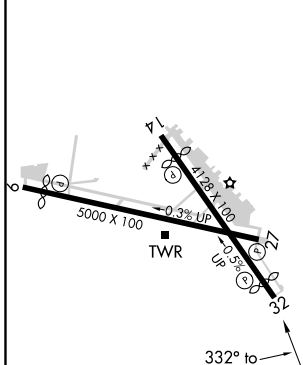
RNP APCH.
 ▼ Rwy 32 helicopter visibility reduction below 1 SM NA.
 Straight-in Rwy 32 NA at night, Circling Rwy 9, 32 NA at night.

MISSED APPROACH: Climb to 4100 direct KONLE and on track 289° to KICED and hold.

ATIS 128.8	SAN ANTONIO APP CON 125.7 290.225	STINSON TOWER ★ 118.2 (CTAF) 379.9	GND CON 121.7 379.9	CLNC DEL 121.7	UNICOM 122.95
----------------------	---------------------------------------------	----------------------------------------------	-------------------------------	--------------------------	-------------------------



ELEV 577	TDZE 570
----------	----------



CATEGORY	A	B	C	D
LNAV MDA	1020-1	450 (500-1)	1020-1 $\frac{3}{8}$ 450 (500-1 $\frac{3}{8}$)	NA
CIRCLING	1040-1 463 (500-1)	1100-1 523 (600-1)	1100-1 $\frac{1}{2}$ 523 (600-1 $\frac{1}{2}$)	NA

SC-3, 10 SEP 2020 to 08 OCT 2020

SC-3, 10 SEP 2020 to 08 OCT 2020