

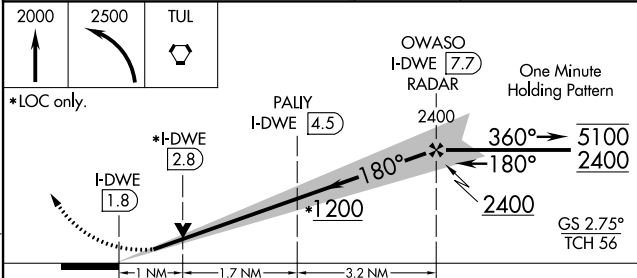
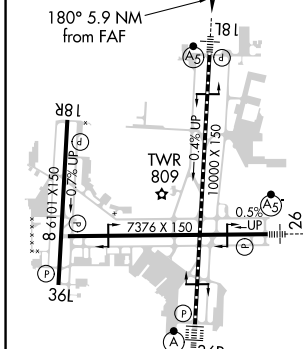
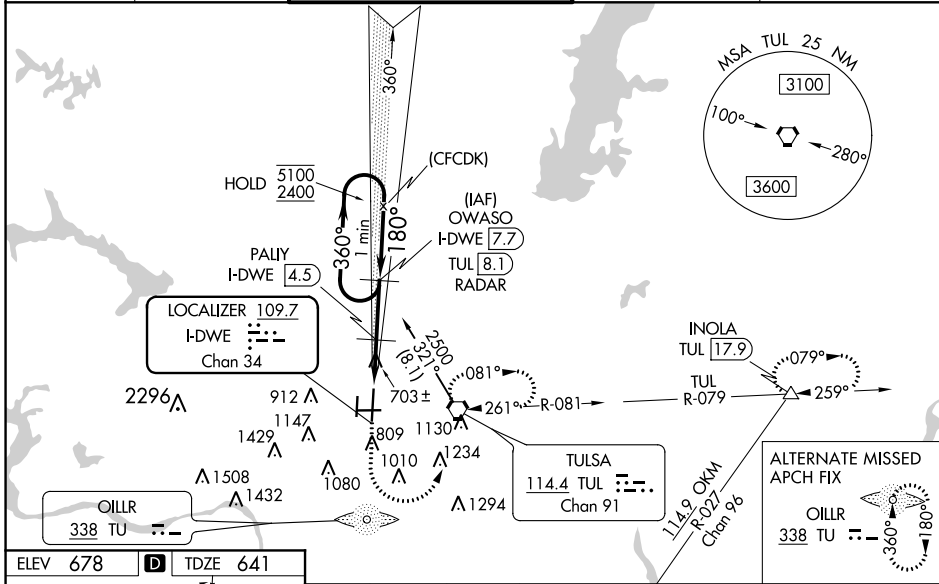
LOC/DME I-DWE <b>109.7</b> Chan <b>34</b>	APP CRS <b>180°</b>	Rwy Idg TDZE <b>10000</b> <b>641</b> Apt Elev <b>678</b>
---	------------------------	---

# ILS or LOC RWY 18L

TULSA INTL (TUL)

DME required for LOC only. DME or RADAR required for procedure entry.	MALSR 	MISSED APPROACH: Climb to 2000 then climbing left turn to 2500 direct TUL VORTAC and hold, continue climb-in-hold to 2500. (TACAN aircraft climb to 1800 then climbing left turn to 3500 on TUL VORTAC R-079 to INOLA INT/17.9 DME and hold E, RT, 259° inbound).
<p>▼ Circling NA for Cat E south of Rwy 8-26. Simultaneous approach authorized with Rwy 18R. Autopilot coupled approach NA below 813 feet. For inop ALS, increase S-ILS 18L Cat E visibility to RVR 4000, S-LOC 18L Cat E visibility to 1½ SM, and PALIY fix minimums S-LOC 18L Cat E visibility to RVR 4500.</p> <p>▲ ASR #RVR 1800 authorized with use of FD or AP or HUD to DA.</p>		

D-ATIS <b>124.9 377.2</b>	TULSA APP CON <b>124.0 338.3</b>	TULSA TOWER <b>121.2 310.8</b> (Rwys 18L-36R, 8-26) <b>118.7 257.8</b> (Rwy 18R-36L)	GND CON <b>121.9 348.6</b>	CLNC DEL <b>134.05 284.7</b>
------------------------------	-------------------------------------	--	-------------------------------	---------------------------------



TDZ/CL Rwy 36R  
HIRL Rwys 8-26, 18L-36R and 18R-36L  
REIL Rwys 8, 18R, 26 and 36L

FAF to MAP 5.9 NM

Knots	60	90	120	150	180
Min:Sec	5:54	3:56	2:57	2:22	1:58

CATEGORY	A	B	C	D	E
S-ILS 18L #	841/24		200 (200-½)		
S-LOC 18L	1200/24	559 (600-½)	1200/60 559 (600-1¼)		
◼ CIRCLING	1200-1	522 (600-1)	1520-2½ 842 (900-2½)	1520-2¾ 842 (900-2¾)	1520-3 842 (900-3)
PALIY FIX MINIMUMS (DME REQUIRED)					
S-LOC 18L	960/24	319 (300-½)	960/40 319 (300-¾)		
◼ CIRCLING	1120-1 442 (500-1)	1160-1 482 (500-1)	1520-2½ 842 (900-2½)	1520-2¾ 842 (900-2¾)	1520-3 842 (900-3)

SC-1, 10 SEP 2020 to 08 OCT 2020

SC-1, 10 SEP 2020 to 08 OCT 2020