

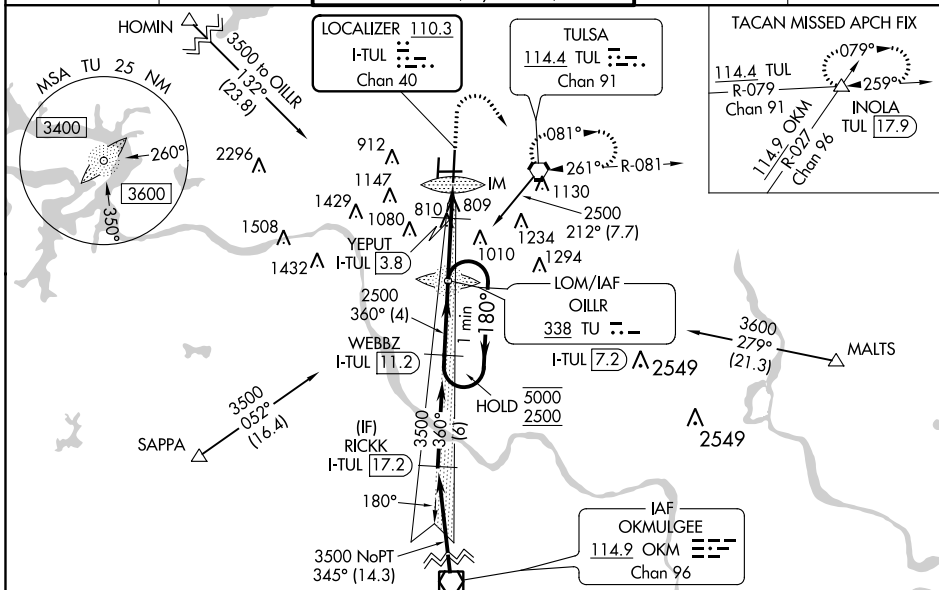
LOC/DME I-TUL 110.3 Chan 40	APP CRS 360°	Rwy Idg 122°	10000
		TDZE 650	
		Apt Elev 678	

ILS or LOC RWY 36R

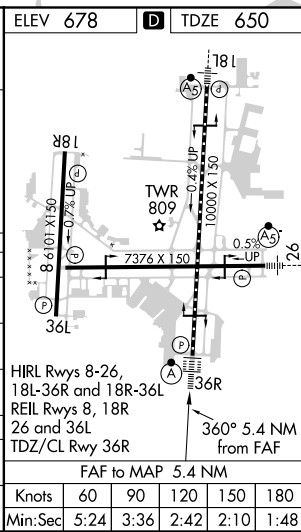
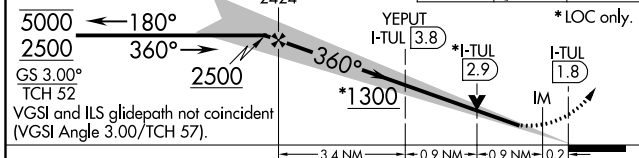
TULSA INTL (TUL)

ADF or DME required for procedure entry.		ALSF-2 	MISSED APPROACH: Climb to 2000 then climbing right turn to 2500 direct TUL VORTAC and hold. (TACAN aircraft climb to 2000 then climbing right turn to 3500 via TUL VORTAC R-079 to INOLA INT/17.9 DME and hold E, RT, 259° inbound).
Simultaneous approach authorized. For inop ALS, increase S-ILS 36R Cat E visibility to RVR 4000. For inop ALS, increase S-LOC 36R Cat E visibility to 1/8 SM. YEPUT Fix Minimums: For inop ALS, increase S-LOC 36R Cat C/D/E visibility to RVR 6000. Circling NA for Cat E south of Rwy 8-26.			

D-ATIS 124.9 377.2	TULSA APP CON 124.0 338.3	TULSA TOWER 121.2 310.8 (Rwys 18L-36R, 8-26) 118.7 257.8 (Rwy 18R-36L)	GND CON 121.9 348.6	CLNC DEL 134.05 284.7
------------------------------	-------------------------------------	--	-------------------------------	---------------------------------



One Minute Holding Pattern	OILRR LOM I-TUL 7.2	2000	2500	TUL	ELEV 678	TDZE 650
----------------------------	----------------------------	------	------	-----	----------	----------



CATEGORY	A	B	C	D	E
S-ILS 36R	850/18		200 (200-1/2)		
S-LOC 36R	1300/24	650 (700-1/2)	1300-1 3/8	650 (700-1 3/8)	
C CIRCLING	1300-1	622 (700-1)	1520-2 1/2 842 (900-2 1/2)	1520-2 3/4 842 (900-2 3/4)	1520-3 842 (900-3)
YEPUT FIX MINIMUMS (DME REQUIRED)					
S-LOC 36R	1060/24	410 (400-1/2)	1060/40	410 (400-3/4)	
C CIRCLING	1120-1 442 (500-1)	1160-1 482 (500-1)	1520-2 1/2 842 (900-2 1/2)	1520-2 3/4 842 (900-2 3/4)	1520-3 842 (900-3)

SC-1, 10 SEP 2020 to 08 OCT 2020

SC-1, 10 SEP 2020 to 08 OCT 2020