


WAAS CH 93504 W18A	APP CRS 180°	Rwy Idg TDZE Apt Elev	10000 641 678
--	------------------------	-----------------------------	--

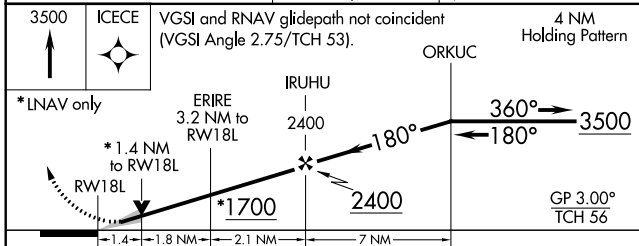
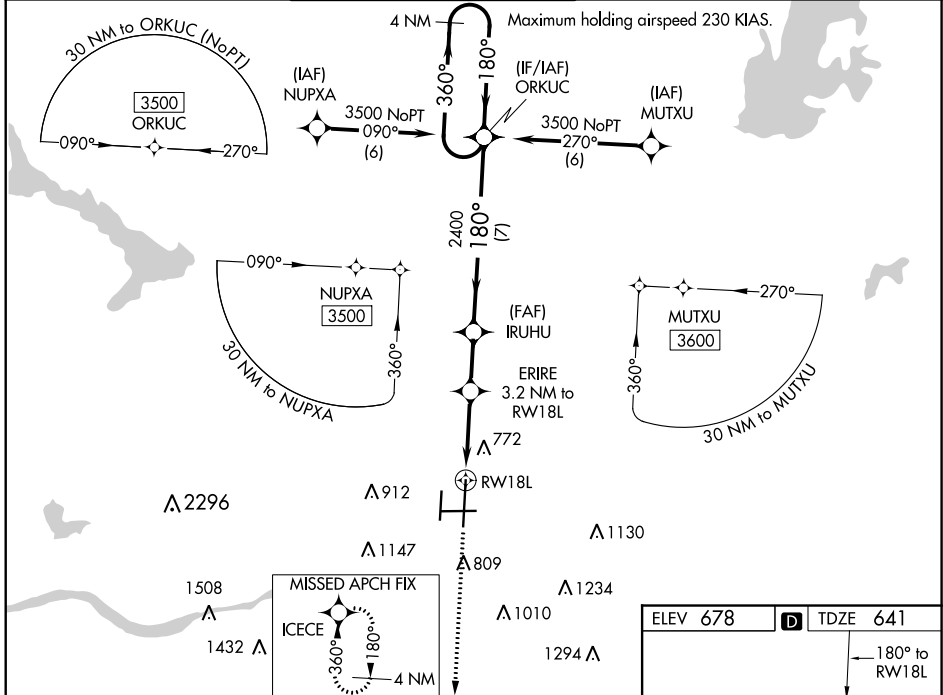
RNAV (GPS) RWY 18L

TULSA INTL (TUL)

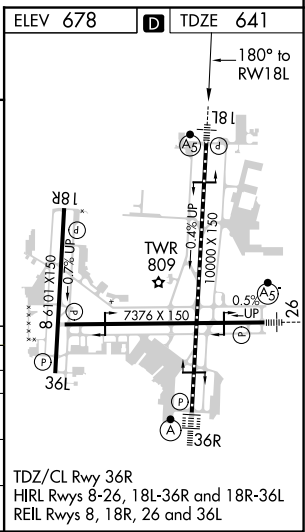
⚠ For uncompensated Baro-VNAV systems, LNAV/VNAV NA below -13°C (9°F) or above 54°C (130°F). Circling NA for Cat E south of Rwy 8-26. DME/DME RNP-0.3 NA.
⚠ For inop MALSR, increase LPV all Cats visibility to RVR 4500, LNAV/VNAV all Cats visibility to 1½ mile, and LNAV Cat E visibility to 1¼ mile. Simultaneous approach authorized with ILS or LOC Rwy 18R. LNAV procedure NA during simultaneous operations. Use of FD or AP providing RNAV track guidance required during simultaneous operations.

MALSR
 MISSED APPROACH: Climb to 3500 direct ICECE and hold.

D-ATIS 124.9 377.2	TULSA APP CON 124.0 338.3	TULSA TOWER 121.2 310.8 (Rwys 18L-36R, 8-26) 118.7 257.8 (Rwy 18R-36L)	GND CON 121.9 348.6	CLNC DEL 134.05 284.7
------------------------------	-------------------------------------	--	-------------------------------	---------------------------------



CATEGORY	A	B	C	D	E
LPV DA	908/24		267 (300-½)		
LNAV/VNAV DA	1128-1¼		487 (500-1¼)		
LNAV MDA	1080/24	439 (500-½)	1080/40	439 (500-¾)	
CIRCLING	1120-1 442 (500-1)	1160-1 482 (500-1)	1520-2½ 842 (900-2½)	1520-2¾ 842 (900-2¾)	1520-3 842 (900-3)



SC-1, 10 SEP 2020 to 08 OCT 2020

SC-1, 10 SEP 2020 to 08 OCT 2020