

APP CRS	Rwy Idg	<b>6101</b>
<b>360°</b>	TDZE	<b>678</b>
	Apt Elev	<b>678</b>

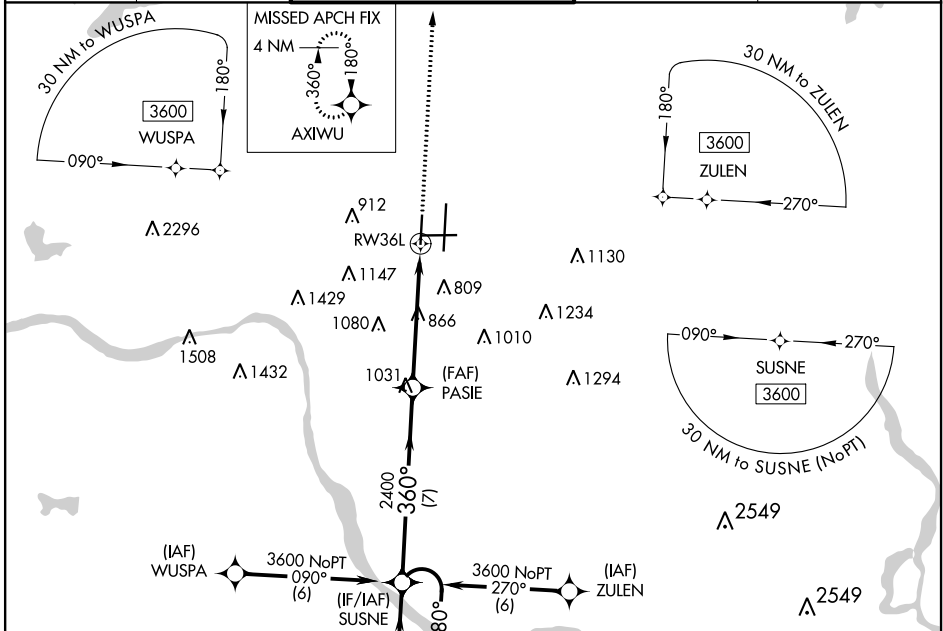
# RNAV (GPS) RWY 36L

TULSA INTL (TUL)

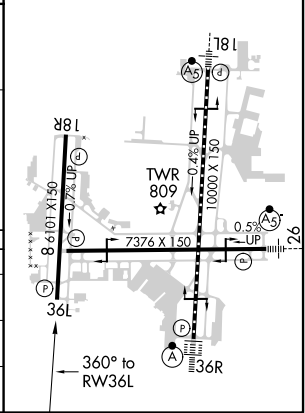
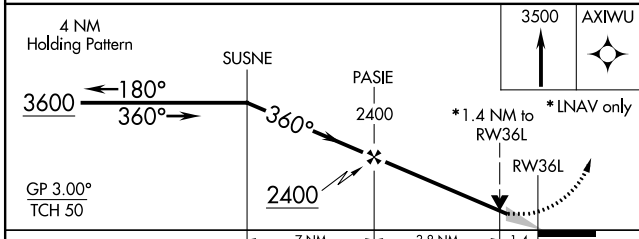
**▽** For uncompensated Baro-VNAV systems, LNAV/VNAV NA below -1.3°C (9°F) or above 54°C (130°F). DME/DME RNP-0.3 NA. Simultaneous approach authorized with ILS or LOC Rwy 36R and ILS Rwy 36R (Cat II). LNAV procedure NA during simultaneous operations. Use of FD or AP providing RNAV track guidance required during simultaneous operations.

**▲** MISSED APPROACH: Climb to 3500 direct AXIWU and hold.

D-ATIS	TULSA APP CON	TULSA TOWER	GND CON	CLNC DEL
<b>124.9 377.2</b>	<b>124.0 338.3</b>	<b>121.2 310.8</b> (Rwys 18L-36R, 8-26) <b>118.7 257.8</b> (Rwy 18R-36L)	<b>121.9 348.6</b>	<b>134.05 284.7</b>



ELEV 678	<b>D</b> TDZE 678
TDZ/CL Rwy 36R	
HIRL Rwys 8-26, 18L-36R and 18R-36L	
REIL Rwys 8, 18R, 26 and 36L	



CATEGORY	A	B	C	D
LNAV/VNAV DA	1105-1 3/8 427 (500-1 3/8)			
LNAV MDA	1180-1 502 (600-1)		1180-1 3/8 502 (600-1 3/8)	
<b>C</b> CIRCLING	1180-1 502 (600-1)		1520-2 1/2 842 (900-2 1/2)	1520-2 3/4 842 (900-2 3/4)

SC-1, 10 SEP 2020 to 08 OCT 2020

SC-1, 10 SEP 2020 to 08 OCT 2020