

VORTAC TUL 114.4 Chan 91	APP CRS 262°	Rwy Idg TDZE Apt Elev	7376 652 678
---------------------------------------	------------------------	-----------------------------	---

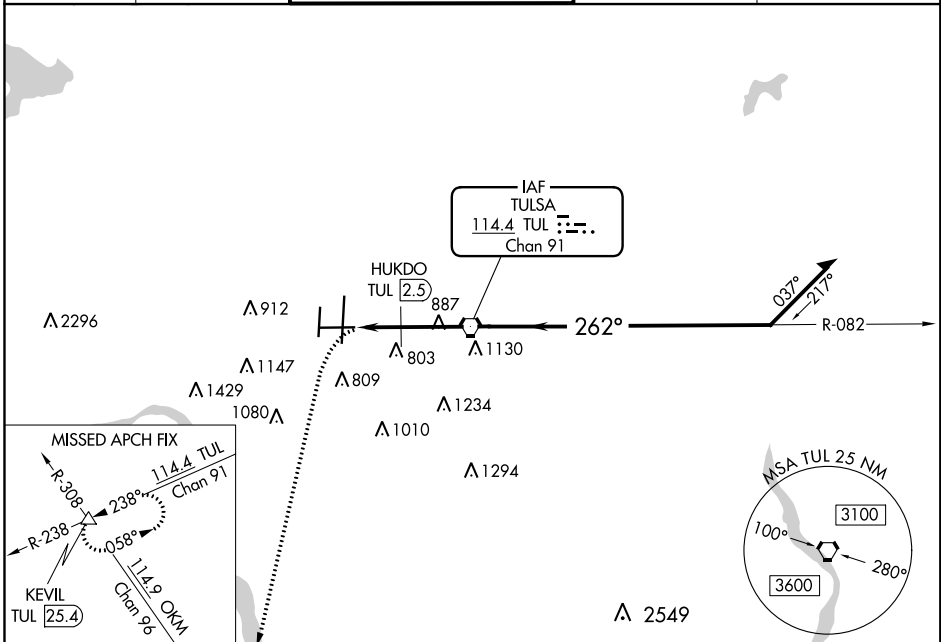
VOR or TACAN RWY 26

TULSA INTL (TUL)

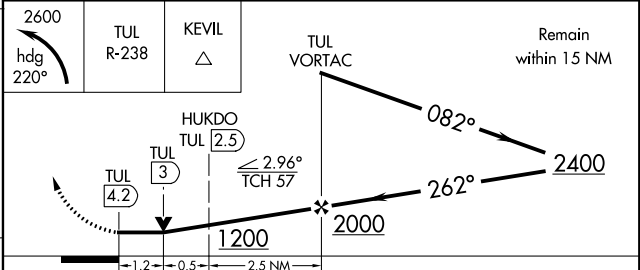
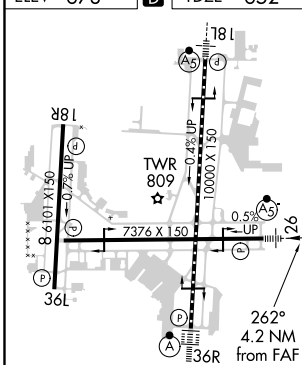
⚠ Circling NA for Cat E south of Rwy 8-26. VOR Minimums: For inop ALS, increase Cat A/B visibility to 1 SM and Cat E to 1½ SM. DME Minimums: For inop ALS, increase Cat A/B visibility to 1 SM and Cat E to 1¼ SM.

MALS MISSED APPROACH: Climbing left turn to 2600 via heading 220° and TUL R-238 to KEVIL INT/TUL 25.4 DME and hold.

D-ATIS 124.9 377.2	TULSA APP CON 124.0 338.3	TULSA TOWER 121.2 310.8 (Rwys 18L-36R, 8-26) 118.7 257.8 (Rwy 18R-36L)	GND CON 121.9 348.6	CLNC DEL 134.05 284.7
------------------------------	-------------------------------------	--	-------------------------------	---------------------------------



ELEV 678	D	TDZE 652
----------	----------	----------



CATEGORY	A	B	C	D	E
S-26	1200-¾	548 (600-¾)	1200-1¼	548 (600-1¼)	
C CIRCLING	1200-1	522 (600-1)	1520-2½ 842 (900-2½)	1520-2¾ 842 (900-2¾)	1520-3 842 (900-3)
HUKDO FIX MINIMUMS					
S-26	1080-¾	428 (500-¾)	1080-¾	428 (500-¾)	1080-¾ 428 (500-¾)
C CIRCLING	1120-1 442 (500-1)	1160-1 482 (500-1)	1520-2½ 842 (900-2½)	1520-2¾ 842 (900-2¾)	1520-3 842 (900-3)

TDZ/CL Rwy 36R

HIRL Rwys 8-26, 18L-36R and 18R-36L

REIL Rwys 8, 18R, 26 and 36L

FAF to MAP 4.2 NM

Knots	60	90	120	150	180
Min:Sec	4:12	2:48	2:06	1:41	1:24

SC-1, 10 SEP 2020 to 08 OCT 2020

SC-1, 10 SEP 2020 to 08 OCT 2020