

# HI-TACAN RWY 15R

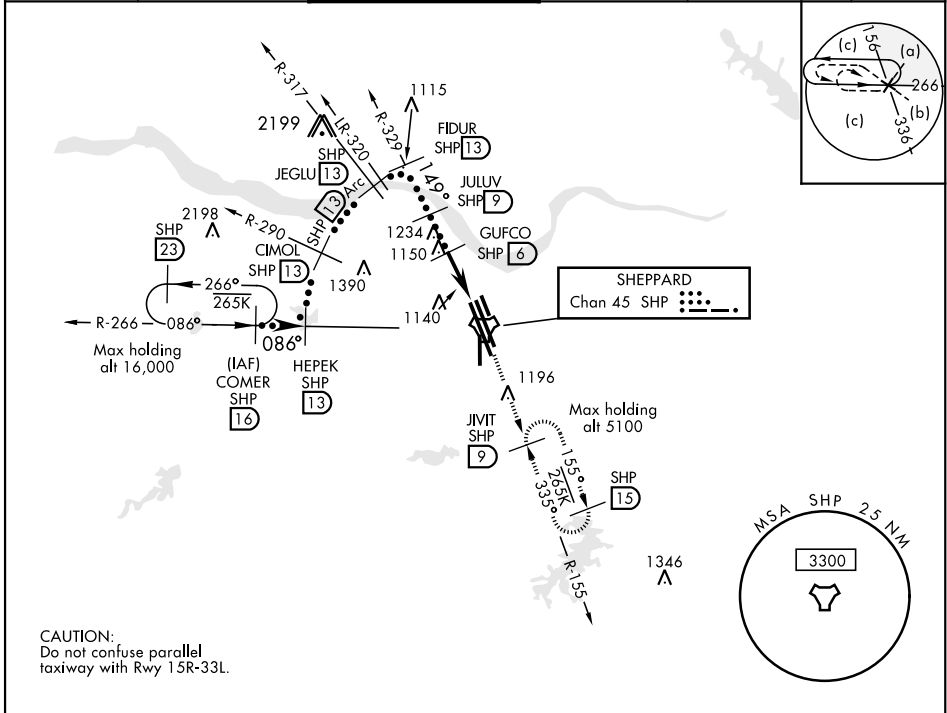
TACAN SHP Chan 45	APCH CRS 149°	Rwy Idg 13,100 THRE 998 Arprt Elev 1019	JAL-454 [USAF]	SHEPPARD AFB/WICHITA FALLS MUNI (KSPS)
----------------------	------------------	---	----------------	--

▼ \* When ALS inop, increase CAT CDE vis to 1 1/4 miles.  
 \*\* Circling not authorized W of Rwy 15R-33L.



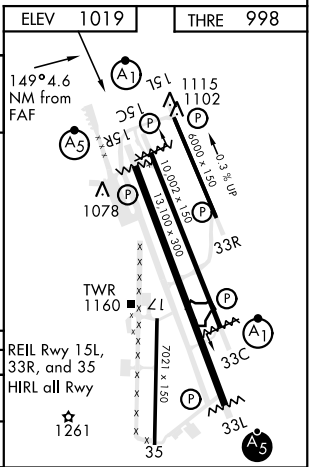
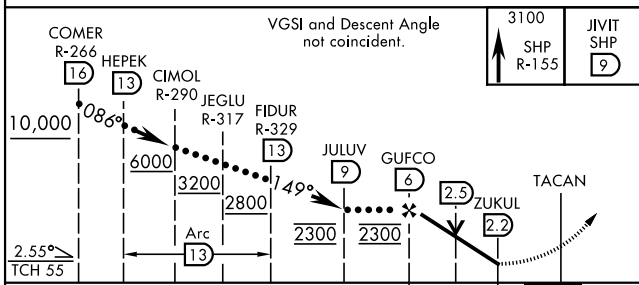
MISSED APPROACH: Climb and maintain 3100, intercept SHP TACAN R-155 to SHP R-155/9 DME (JIVIT) and hold.

ATIS * 132.05 269.9	SHEPPARD APP CON 118.2 269.025	SHEPPARD TOWER * 119.75 279.525 (CTAF)	GND CON 125.5 289.4	CLNC DEL 121.2 282.225	ASR
------------------------	-----------------------------------	---	------------------------	---------------------------	-----



CAUTION:  
Do not confuse parallel taxiway with Rwy 15R-33L.

EMERG SAFE ALT 100 NM 4600



CATEGORY	C	D	E
S-15R*	1420-3/4	422 (500-3/4)	
CIRCLING**	1480-1 1/2 (500-1 1/2) 461	2020-3 (1100-3) 1001	2080-3 (1100-3) 1061

# HI-TACAN RWY 15R

SC-2, 10 SEP 2020 to 08 OCT 2020

SC-2, 10 SEP 2020 to 08 OCT 2020