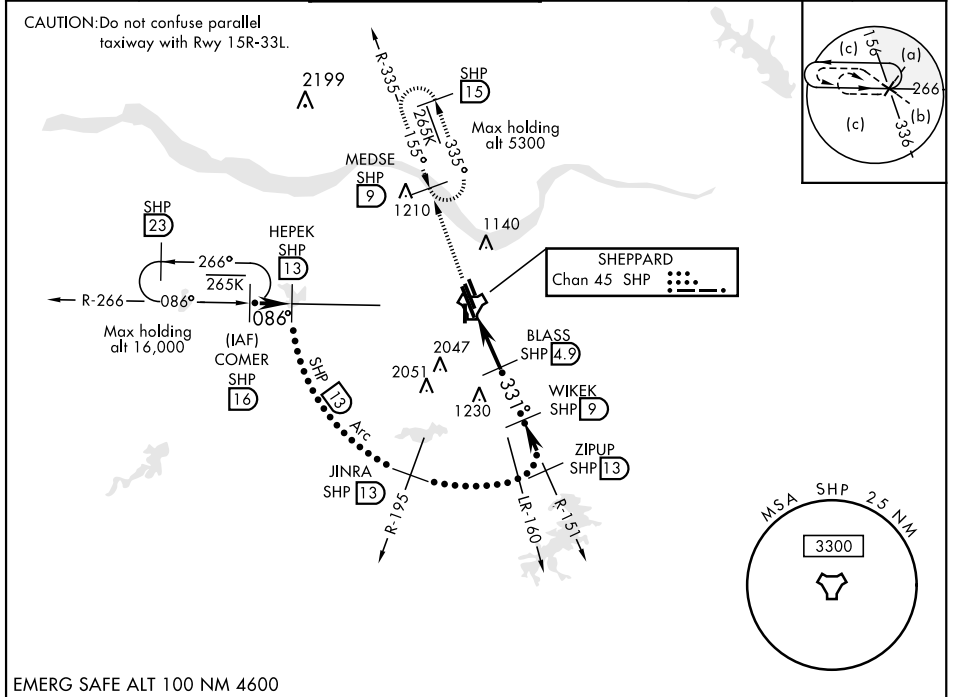


# HI-TACAN RWY 33C

TACAN SHP Chan 45	APCH CRS 331°	Rwy ldg THRE Arprt Elev 10,002 989 1019	JAL-454 [USAF]	SHEPPARD AFB/WICHITA FALLS MUNI (KSPS)
----------------------	------------------	--	----------------	--

▼ \* When ALS inop, increase CAT CDE vis to 1 mile.  
 \*\* Circling not authorized W of Rwy 15R-33L.

ATIS *	SHEPPARD APP CON	SHEPPARD TOWER *	GND CON	CLNC DEL	ASR
132.05 269.9	118.2 269.025	119.75 279.525 (CTAF)	125.5 289.4	121.2 282.225	



EMERG SAFE ALT 100 NM 4600

VGSI and descent angles not coincident. 3300 SHP R-335 MEDSE SHP 9			ELEV 1019	THRE 989
CATEGORY	C	D	E	
S-33C *	1360-5%	371 (400-5%)		
CIRCLING **	1480-1½ 461 (500-1½)	2020-3 1001 (1100-3)	2080-3 1061 (1100-3)	

# HI-TACAN RWY 33C

SC-2, 10 SEP 2020 to 08 OCT 2020

SC-2, 10 SEP 2020 to 08 OCT 2020