

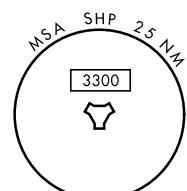
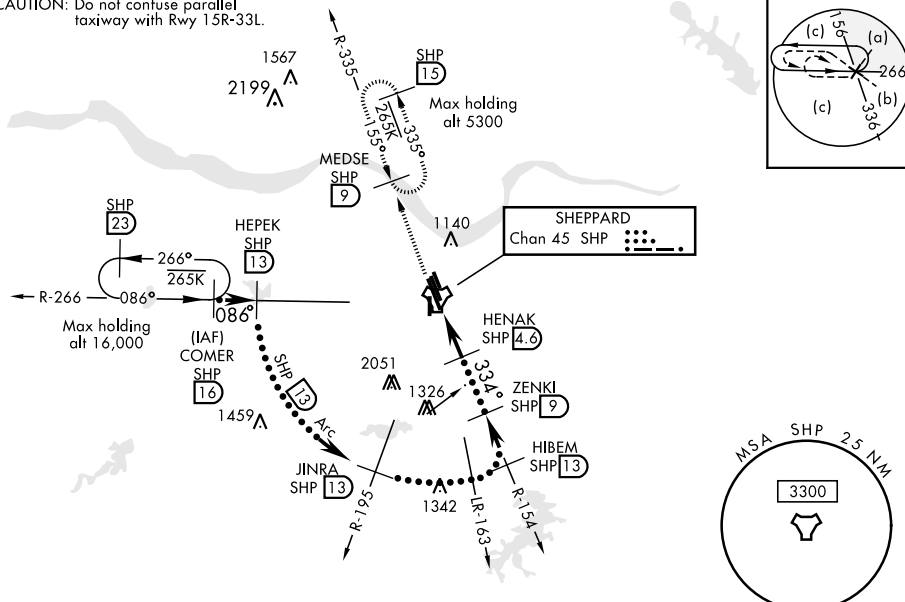
WICHITA FALLS, TEXAS

# HI-TACAN RWY 33L

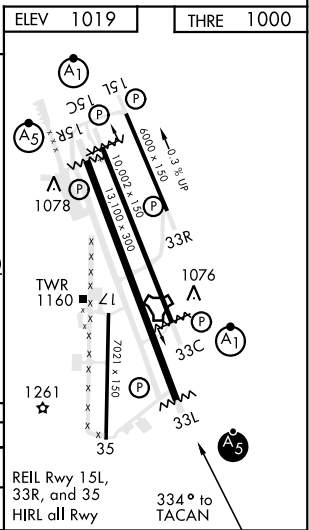
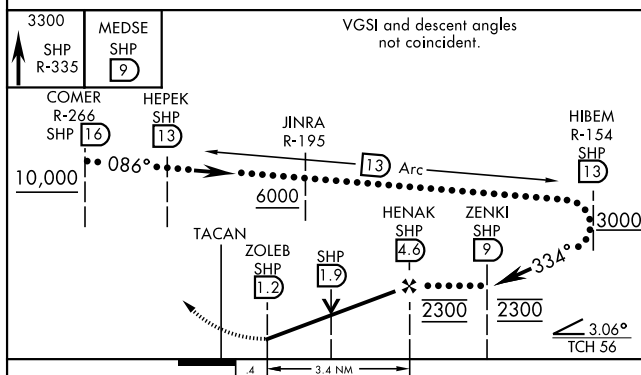
TACAN SHP Chan 45	APCH CRS 334°	Rwy Idg 13,100 THRE 1000 Arpt Elev 1019	JAL-454 [USAF]	SHEPPARD AFB/WICHITA FALLS MUNI (KSPS)
* When ALS inop, increase CAT CDE vis to 1½ miles. ** Circling not authorized W of Rwy 15R-33L.			MALSR A5	MISSED APPROACH: Climb and maintain 3300, intercept SHP TACAN R-335 to SHP R-335/9 DME (MEDSE) and hold.

ATIS *	SHEPPARD APP CON	SHEPPARD TOWER *	GND CON	CLNC DEL	ASR
132.05 269.9	118.2 269.025	119.75 0 279.525 (CTAF)	125.5 289.4	121.2 282.225	

CAUTION: Do not confuse parallel taxiway with Rwy 15R-33L.



EMERG SAFE ALT 100 NM 4600



CATEGORY	C	D	E
S-33L *	1420-¾	420	(500-¾)
CIRCLING **	1480-1½ 461 (500-1½)	2020-3 1001 (1100-3)	2080-3 1061 (1100-3)

WICHITA FALLS, TEXAS 33°59'N-98°30'W SHEPPARD AFB/WICHITA FALLS MUNI (KSPS)

Amdt 6 09JAN14

# HI-TACAN RWY 33L

SC-2, 10 SEP 2020 to 08 OCT 2020

SC-2, 10 SEP 2020 to 08 OCT 2020