

WICHITA FALLS, TEXAS

ILS or LOC/DME RWY 15C

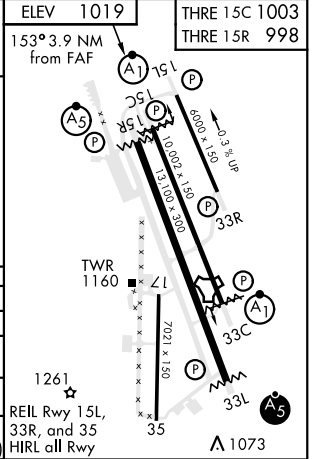
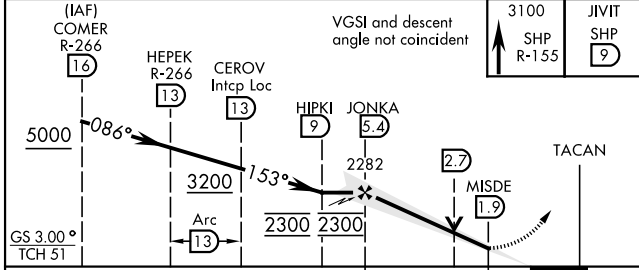
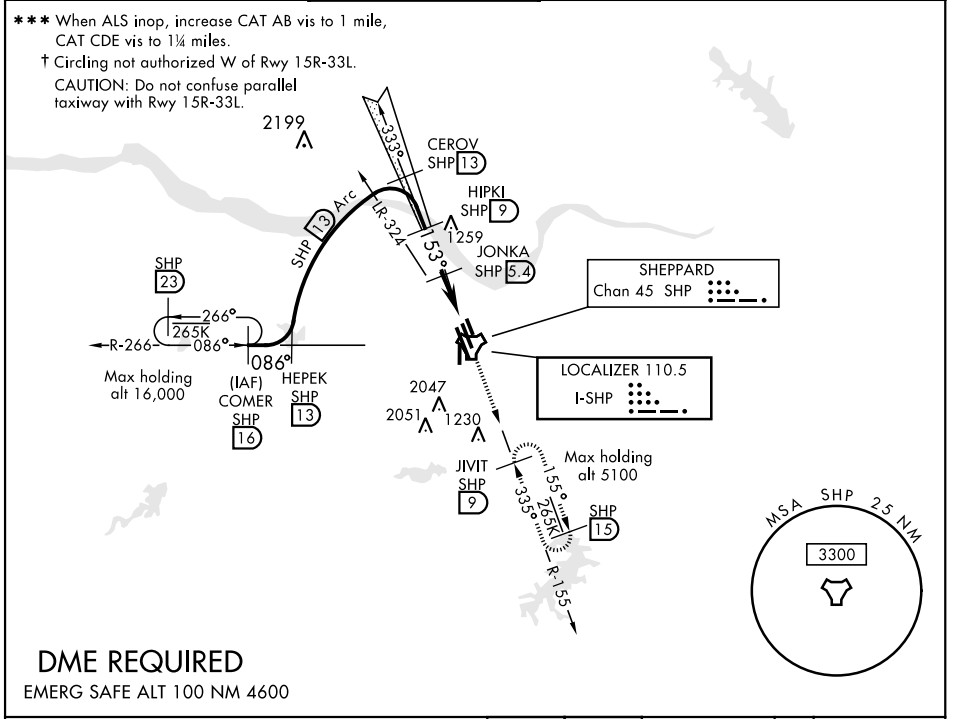
LOC I-SHP	APCH CRS 153°	Rwy Ldg 15C 10,002 15R 13,100 THRE 15C 1003 15R 998 Arpt Elev 1019
-----------	-------------------------	---

AL-454 [USAF]

SHEPPARD AFB/
WICHITA FALLS MUNI (KSPS)

A1 ALSF-1 Rwy 15C
A5 MALSR Rwy 15R
 MISSED APPROACH: Climb and maintain 3100, intercept SHP TACAN R-155 to SHP R-155/9 DME (JIVIT) and hold.

ATIS ★ 132.05 269.9	SHEPPARD APP CON 118.2 269.025	SHEPPARD TOWER ★ 119.75 279.525 (CTAF)	GND CON 125.5 289.4	CLNC DEL 121.2 282.225	ASR
-------------------------------	--	--	-------------------------------	----------------------------------	-----



CATEGORY	A	B	C	D	E
S-ILS 15C *	1203-1/2		200	(200-1/2)	
S-LOC/ DME 15C **	1420-1/2	417 (500-1/2)	1420-3/4	417	(500-3/4)
SIDESTEP 15R ***	1420-1/2	422 (500-1/2)	1420-3/4	422	(500-3/4)
CIRCLING†	1440-1 421 (500-1)	1480-1 461 (500-1)	1480-1/2 461 (500-1/2)	2020-3 1001 (1100-3)	2080-3 1061 (1100-3)

WICHITA FALLS, TEXAS 33°59'N-98°30'W

SHEPPARD AFB/WICHITA FALLS MUNI (KSPS)

Amtd 8 09JAN14

ILS or LOC/DME RWY 15C

SC-2, 10 SEP 2020 to 08 OCT 2020

SC-2, 10 SEP 2020 to 08 OCT 2020