

WICHITA FALLS, TEXAS

ILS or LOC/DME Y RWY 33L

LOC/DME I-SPS 109.7 Chan 34	APCH CRS 333°	Rwy ldg 33L 13,100 33C 10,002 TDZE 33L 1000 33C 989 Arprt Elev 1019
---	-------------------------	--

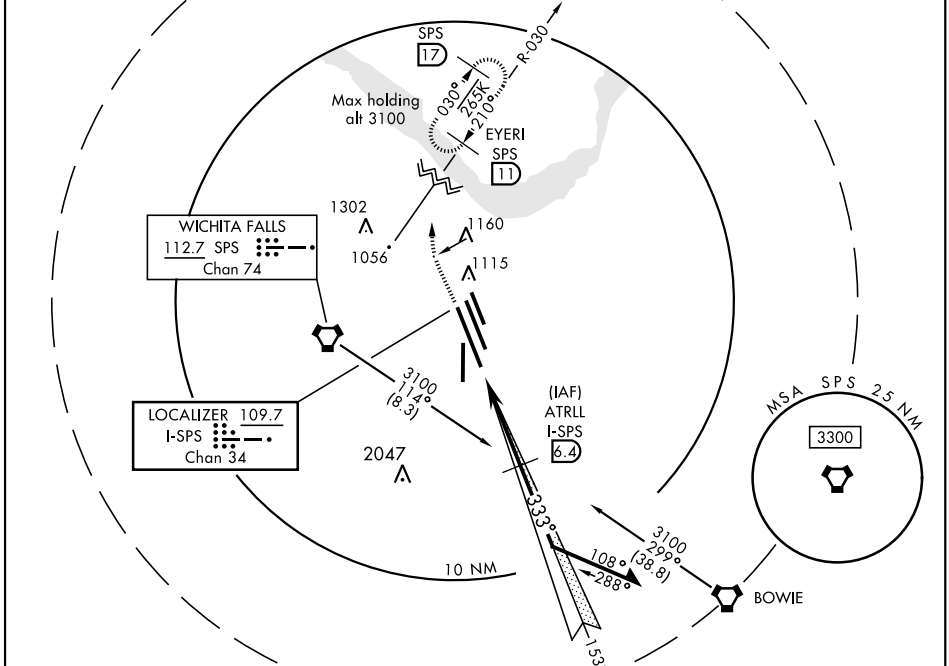
AL-454 [USAF]

SHEPPARD AFB/
WICHITA FALLS MUNI (KSPS)

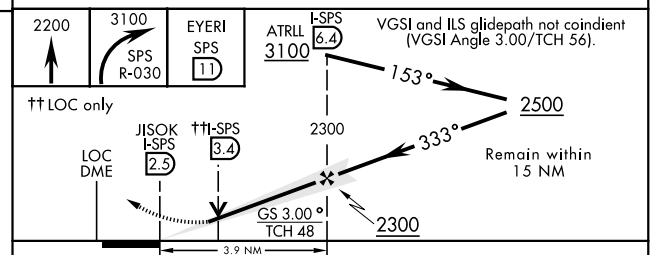
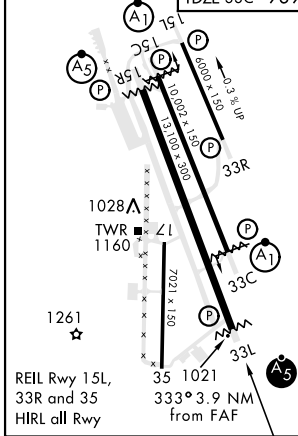
▼ * When ALS inop, increase vis to ¾ mile. ** When ALS inop, increase vis to 1 mile. *** When ALS inop, increase vis to 1 mile.	MALSR A5	ALSF-1 A1	MISSED APPROACH: Climb to 2200, then climbing right turn to 3100 via SPS VORTAC R-030 to EYERI (SPS R-030/11) and hold.
--	--------------------	---------------------	---

ATIS ★ 132.05 269.9	SHEPPARD APP CON 118.2 269.025	SHEPPARD TOWER ★ 119.75 279.525 (CTAF)	GND CON 125.5 289.4	CLNC DEL 121.2 282.225	ASR
-------------------------------	--	--	-------------------------------	----------------------------------	-----

† Circling NA West of Rwy 15R/33L.



ELEV 1019	TDZE 33L 1000 TDZE 33C 989	ENROUTE FACILITIES	EMERG SAFE ALT 100 NM FROM SPS VORTAC 4600
-----------	-------------------------------	--------------------	---



CATEGORY	A	B	C	D	E
S-ILS 33L *		1200-½	200	(200-½)	
S-LOC/ ** DME 33L		1340-½	340	(400-½)	
SIDESTEP 33C ***	1340-½	351 (400-½)	1340-⅝	351 (400-⅝)	
◻ CIRCLING†	1440-1 421 (500-1)	1480-1 461 (500-1)	1480-1½ 461 (500-1½)	2020-3 1001(1100-3)	2080-3 1061(1100-3)

WICHITA FALLS, TEXAS 33°59'N-98°30'W
Amdt 6 16JUL20

SHEPPARD AFB/WICHITA FALLS MUNI (KSPS)

ILS or LOC/DME Y RWY 33L

SC-2, 10 SEP 2020 to 08 OCT 2020

SC-2, 10 SEP 2020 to 08 OCT 2020