

# RNAV (GPS) RWY 15R

APCH CRS <b>153°</b>	Rwy ldg <b>13,100</b> TDZE <b>998</b> Arprt Elev <b>1019</b>
-------------------------	--

AL-454 [USAF]

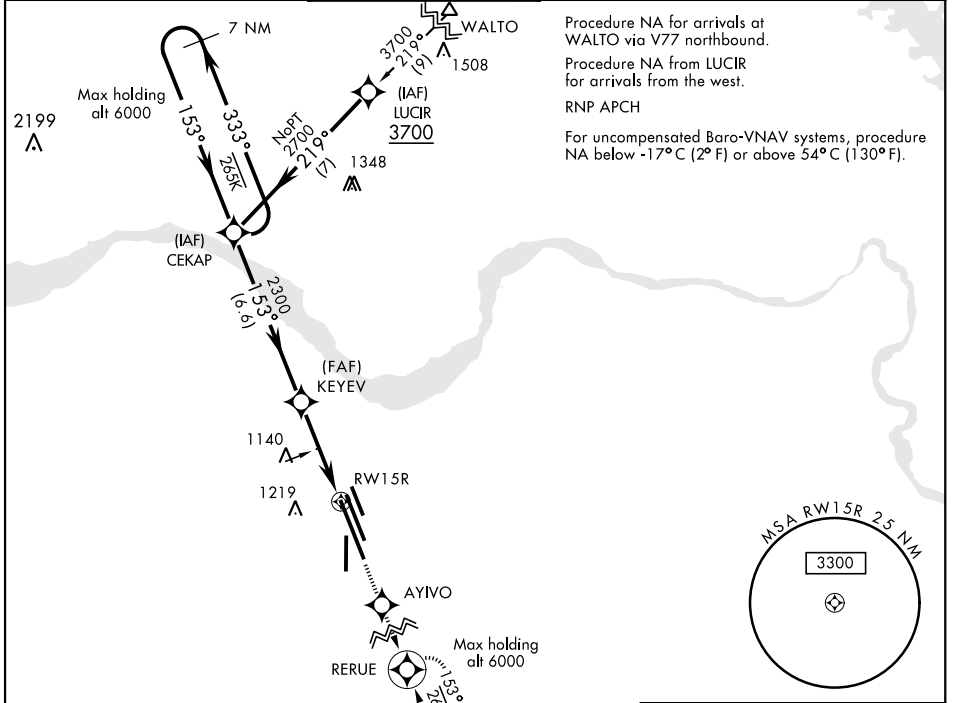
SHEPPARD AFB/WICHITA FALLS MUNI (KSPS)

▼ \* When ALS inop, increase CAT A vis to ¾ mile; CAT BCDE vis to ½ mile.  
 \*\* When ALS inop, increase CAT AB vis to 1 mile; CAT CDE vis to 1¼ mile.  
 \*\*\* Circling NA West of Rwy 15R-33L.



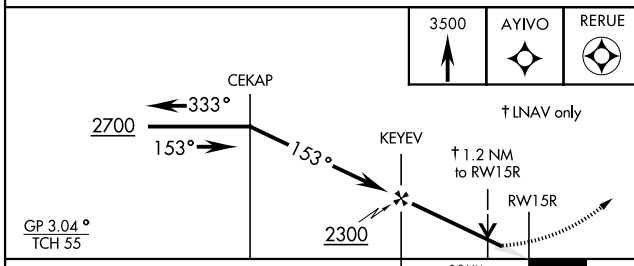
MISSED APPROACH: Climb to 3500 direct AYIVO and via 153° track to RERUE and hold.

ATIS ★ <b>132.05 269.9</b>	SHEPPARD APP CON <b>118.2 269.025</b>	SHEPPARD TOWER ★ <b>119.75 0 279.525 (CTAF)</b>	GND CON <b>125.5 289.4</b>	CLNC DEL <b>121.2 282.225</b>	ASR
-------------------------------	--	--	-------------------------------	----------------------------------	-----

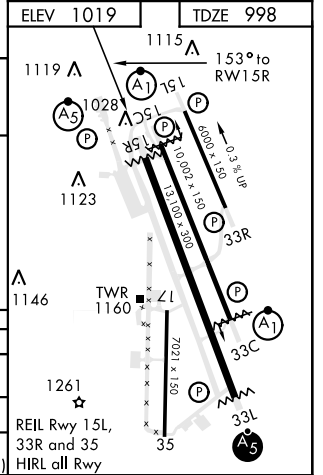


Procedure NA for arrivals at WALTO via V77 northbound.  
 Procedure NA from LUCIR for arrivals from the west.  
 RNP APCH  
 For uncompensated Baro-VNAV systems, procedure NA below -17°C (2°F) or above 54°C (130°F).

EMERG SAFE ALT FROM RW15R 100 NM 4600



CATEGORY	A	B	C	D	E
LNAV/VNAV DA*	1255-½ 257 (300-½)	1266-½ 268 (300-½)	1274-½ 276 (300-½)	1285-½ 287 (300-½)	
LNAV MDA**	1420-½	422 (500-½)	1420-¾		422 (500-¾)
*** CIRCLING	1440-1	1480-1	1480-1½	2020-3	2080-3
	421 (500-1)	461 (500-1)	461 (500-1½)	1001 (1100-3)	1061 (1100-3)



# RNAV (GPS) RWY 15R

SC-2, 10 SEP 2020 to 08 OCT 2020

SC-2, 10 SEP 2020 to 08 OCT 2020