

# RNAV (GPS) RWY 33L

SHEPPARD AFB/WICHITA FALLS MUNI (KSPS)

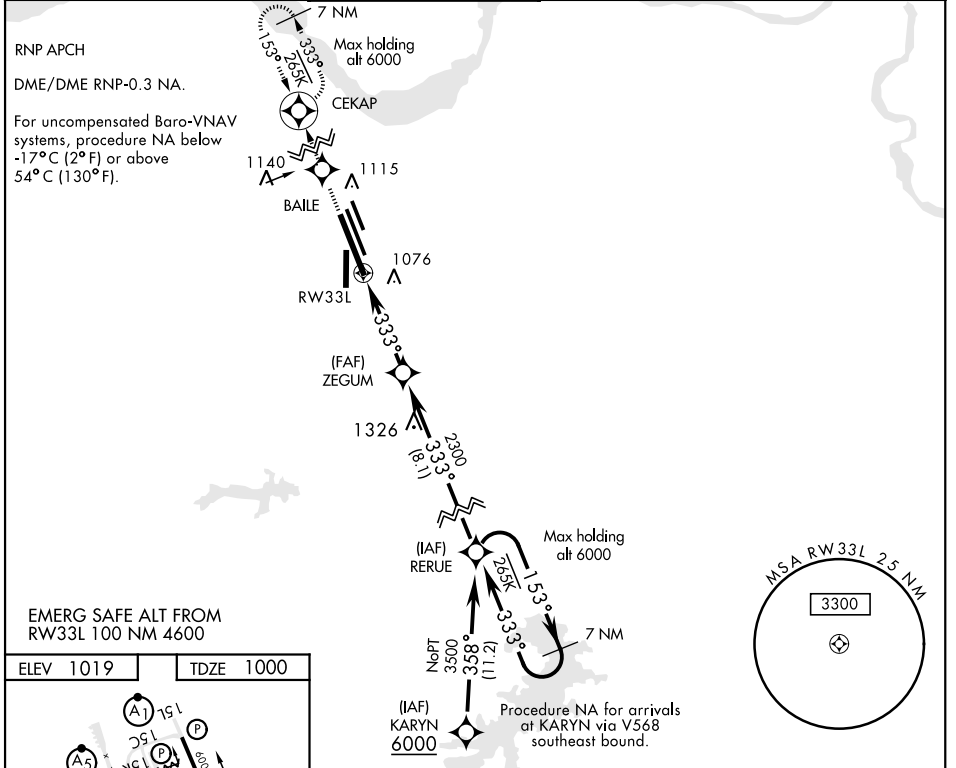
APCH CRS <b>333°</b>	Rwy ldg <b>13.100</b>
	TDZE <b>1000</b>
	Arpt Elev <b>1019</b>

**▽** \* When ALS inop, increase vis to 3/4 mile.  
 \*\* When ALS inop, increase vis to 1 mile.  
 \*\*\* Circling NA West of Rwy 15R-33L.

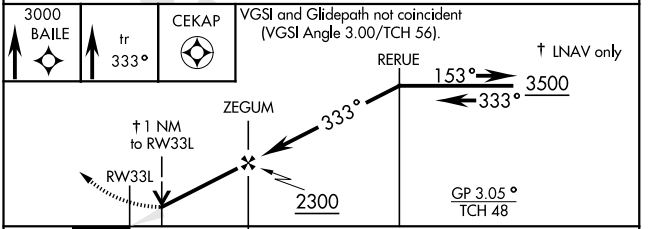
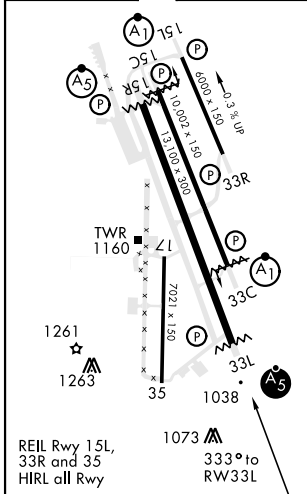


**MISSED APPROACH:** Climb to 3000 via 333° track to BAILE, and via 333° track to CEKAP and hold.

ATIS ★ <b>132.05 269.9</b>	SHEPPARD APP CON <b>118.2 269.025</b>	SHEPPARD TOWER ★ <b>119.75 0 279.525 (CTAF)</b>	GND CON <b>125.5 289.4</b>	CLNC DEL <b>121.2 282.225</b>	ASR
-------------------------------	--	--	-------------------------------	----------------------------------	-----



ELEV 1019	TDZE 1000
-----------	-----------



CATEGORY	A	B	C	D	E
LNAV/VNAV DA *	1255-1/2				
LNAV MDA **	1360-1/2 360 (400-1/2)		1360-5/8 360 (400-3/4)		
*** CIRCLING	1440-1	1480-1	1480-1	2020-3	2080-3
	421 (500-1)	461 (500-1)	461 (500-1 1/2)	1001 (1100-3)	1061 (1100-3)

# RNAV (GPS) RWY 33L

SC-2, 10 SEP 2020 to 08 OCT 2020

SC-2, 10 SEP 2020 to 08 OCT 2020