

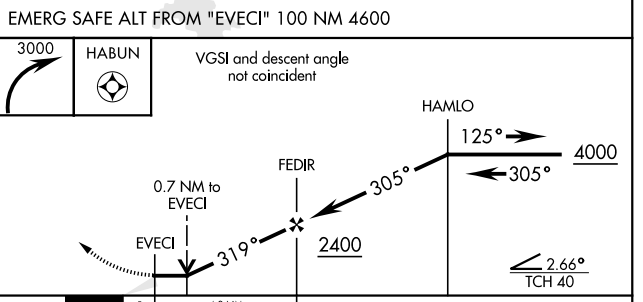
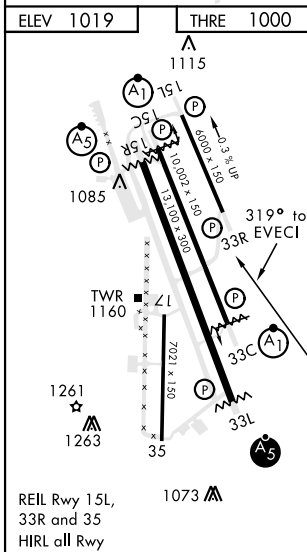
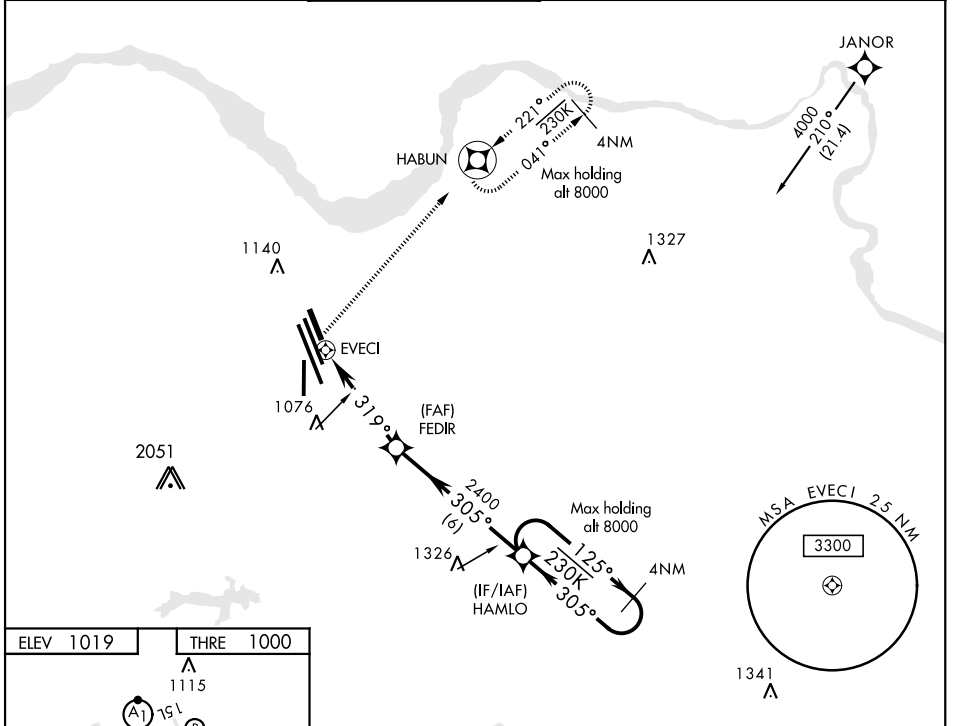
RNAV (GPS) RWY 33R

SHEPPARD AFB/WICHITA FALLS MUNI (KSPS)

APCH CRS	Rwy Idg	6000
319°	THRE	1000
	Arpt Elev	1019

<p>V * Circling NA West of RWY 15R/33L. DME/DME RNP-0.3 NA.</p>	<p>MISSED APPROACH: Climbing right turn to 3000 direct HABUN and hold.</p>
--	--

<p>ATIS ★ 132.05 269.9</p>	<p>SHEPPARD APP CON 118.2 269.025</p>	<p>SHEPPARD TOWER ★ 119.75 0 279.525 (CTAF)</p>	<p>GND CON 125.5 289.4</p>	<p>CLNC DEL 121.2 282.225</p>	<p>ASR</p>
---------------------------------------	--	--	---------------------------------------	--	------------



CATEGORY	A	B	C	D	E
LNAV MDA	1420-1 420 (500-1)		1420-1½ 420 (500-1½)		NA
CIRCLING*	1440-1 421 (500-1)	1480-1 461 (500-1)	1480-1½ 461 (500-1½)	2020-3 1001(1100-3)	NA

RNAV (GPS) RWY 33R

SC-2, 10 SEP 2020 to 08 OCT 2020

SC-2, 10 SEP 2020 to 08 OCT 2020