

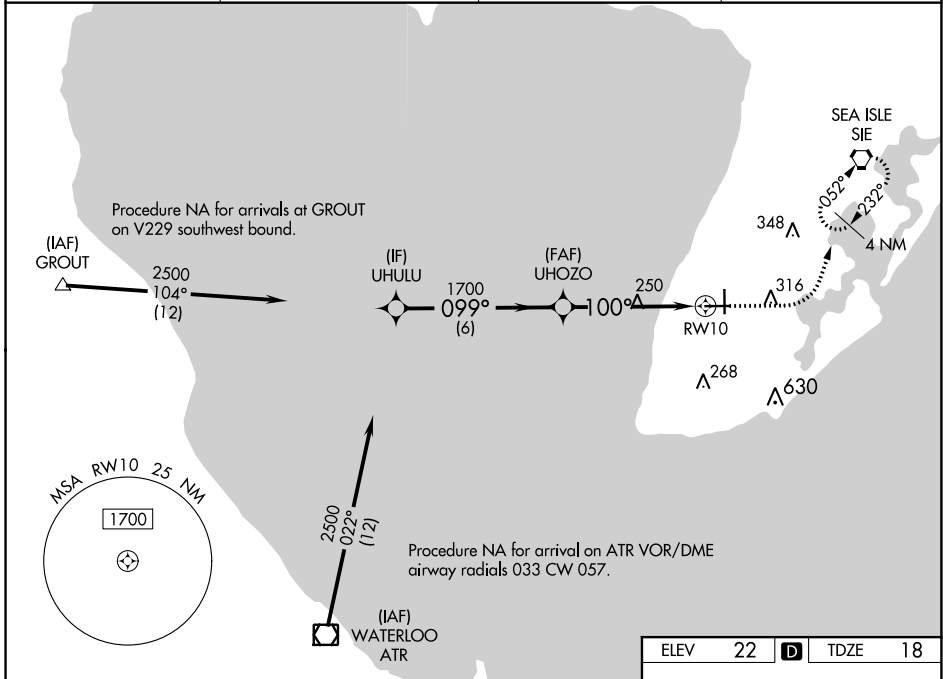
WAAS CH 93541 W10A	APP CRS 100°	Rwy ldg TDZE Apt Elev	4998 18 22
--	------------------------	-----------------------------	---------------------------------------

RNAV (GPS) RWY 10

CAPE MAY COUNTY (WWD)

RNP APCH.		MISSED APPROACH: Climb to 500 then climbing left turn to 2000 direct SIE VORTAC and hold.
<p>▽ For uncompensated Baro-VNAV systems, LNAV/VNAV NA below -15° C or above 54° C. Circling NA for Cats C and D northeast of Rwy 19 and 28. Rwy 10 helicopter visibility reduction below 3/4 SM NA. Circling Rwy 1 NA at night.</p>		

AWOS-3PT 118.275	ATLANTIC CITY APP CON 124.6 327.125	CLNC DEL 121.7	UNICOM 122.7 (CTAF) 0
----------------------------	---	--------------------------	---------------------------------



NE-2, 10 SEP 2020 to 08 OCT 2020

NE-2, 10 SEP 2020 to 08 OCT 2020

VGSI and RNAV glidepath not coincident (VGSI Angle 3.00/TCH 45).				
UHULU		UHOZO		SIE
2500		1700		500
099°		100°		2000
GP 3.00°		* 1.4 NM to RWY 10		61
TCH 56		RWY 10		5252 X 150
6 NM		3.7 NM		4998 X 150
		1.4 NM		106
CATEGORY	A	B	C	D
LPV DA	285-7/8		267 (300-7/8)	
LNAV/VNAV DA	336-1		318 (400-1)	
LNAV MDA	500-1 482 (500-1)		500-1 3/8 482 (500-1 3/8)	
C CIRCLING	500-1 478 (500-1)	620-1 598 (600-1)	620-1 1/2 598 (600-1/2)	980-3 958 (1000-3)

