

RNAV (GPS) RWY 19

CAPE MAY COUNTY (WWD)

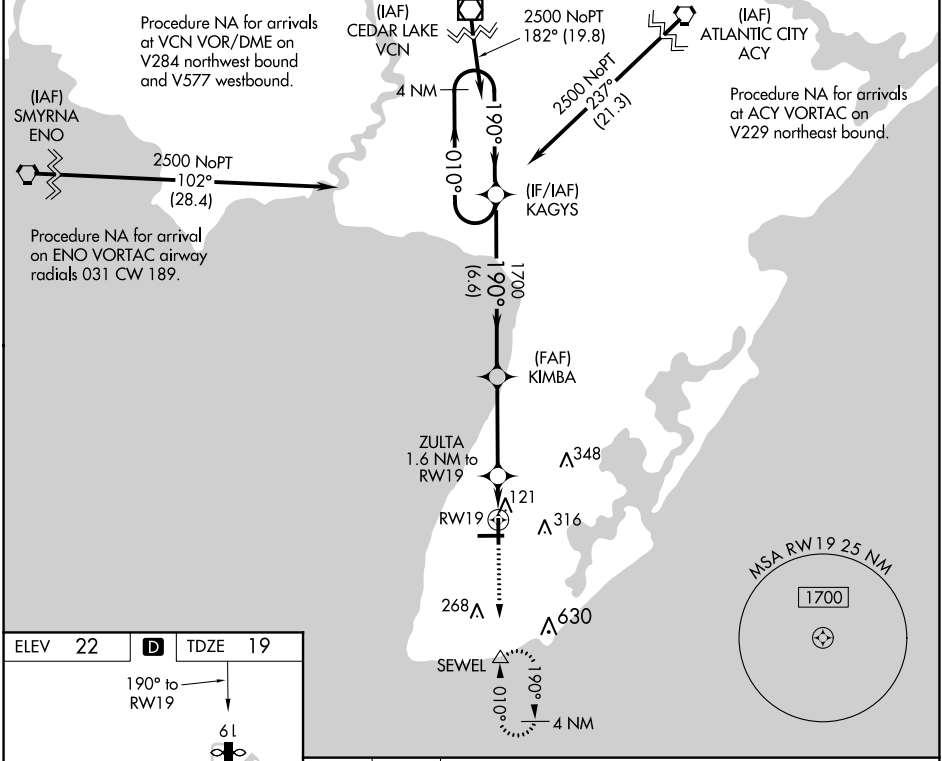
WAAS CH 82400 W19A	APP CRS 190°	Rwy lgt 5037 TDZE 19 Apt Elev 22
--	------------------------	---

RNP APCH.

▼ For uncompensated Baro-VNAV systems, LNAV/VNAV NA below -8°C or above 54°C.
▲ Circling NA for Cats C and D NE of Rwy 19 and 28. Rwy 19 helicopter visibility reduction below 1 SM NA. Circling Rwy 1 NA at night.

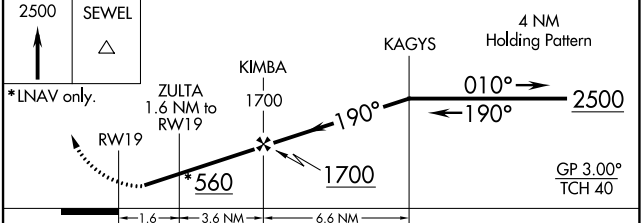
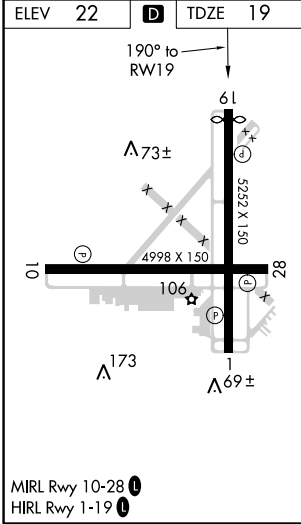
MISSED APPROACH: Climb to 2500 direct SEWEL and hold, continue climb-in-hold to 2500.

AWOS-3PT 118.275	ATLANTIC CITY APP CON 124.6 327.125	CLNC DEL 121.7	UNICOM 122.7 (CTAF) 0
----------------------------	---	--------------------------	---------------------------------



NE-2, 10 SEP 2020 to 08 OCT 2020

NE-2, 10 SEP 2020 to 08 OCT 2020



CATEGORY	A	B	C	D
LPV DA		269-1	250 (300-1)	
LNAV/VNAV DA		392-1¼	373 (400-1¼)	
LNAV MDA		380-1	361 (400-1)	
C CIRCLING	480-1 458 (500-1)	620-1 598 (600-1)	620-1½ 598 (600-1½)	980-3 958 (1000-3)