

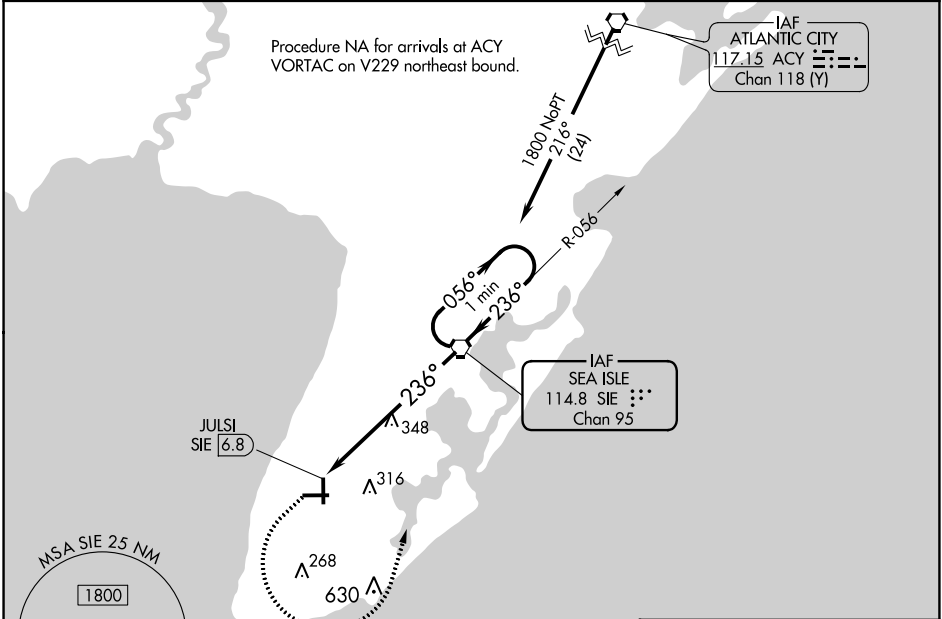
VORTAC SIE 114.8 Chan 95	APP CRS 236°	Rwy Idg TDZE Apt Elev	N/A N/A 22
--	------------------------	-----------------------------	---------------------------------------

VOR-A
CAPE MAY COUNTY (WWD)

⚠ Circling NA for Cats C and D NE of Rwy 19 and 28.
Circling Rwy 1 NA at night.

MISSED APPROACH: Climb to 800 then climbing left turn to 1800 direct SIE VORTAC and hold.

AWOS-3PT 118.275	ATLANTIC CITY APP CON 124.6 327.125	CLNC DEL 121.7	UNICOM 122.7 (CTAF) 0
----------------------------	---	--------------------------	---------------------------------



NE-2, 10 SEP 2020 to 08 OCT 2020

NE-2, 10 SEP 2020 to 08 OCT 2020

