

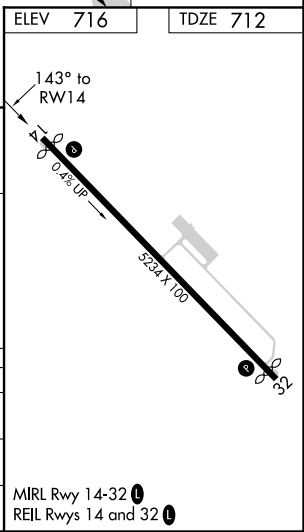
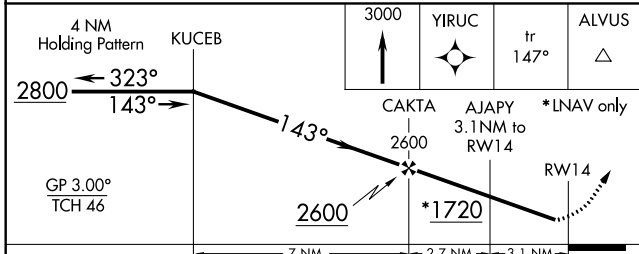
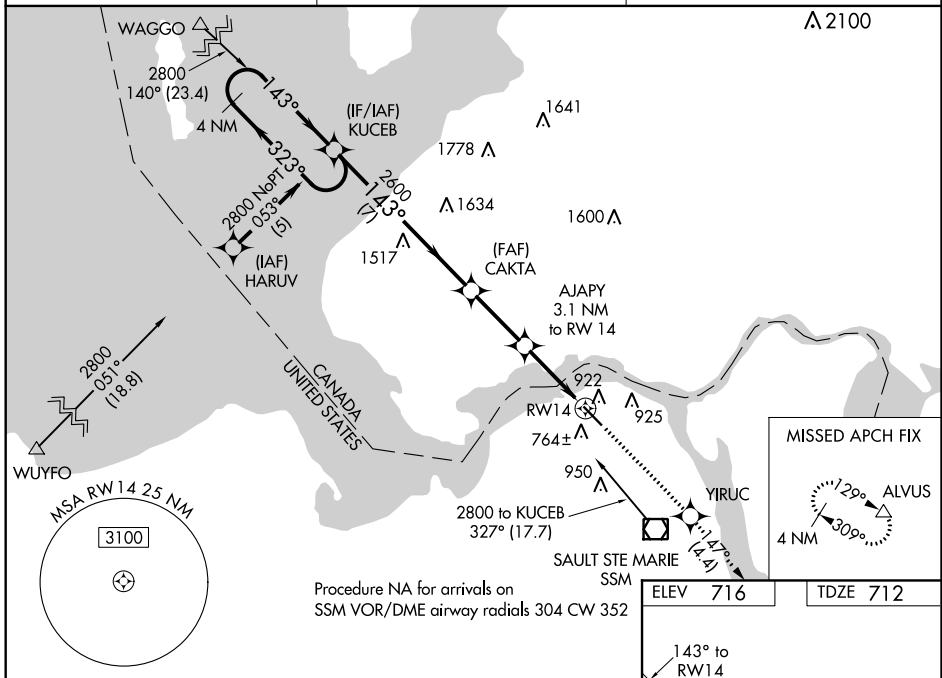
WAAS CH 70622 W14A	APP CRS 143°	Rwy Idg TDZE Apt Elev	5054 712 716
--	------------------------	-----------------------------	---

RNAV (GPS) RWY 14

SAULT STE MARIE MUNI/SANDERSON FIELD (A.NJ)

RNP APCH.	<p>▽ For uncompensated Baro-VNAV systems, LNAV/VNAV NA below -16°C or above 54°C. ▲ Rwy 14 helicopter visibility reduction below ¾ SM NA. When local altimeter setting not received, use Chippewa County Intl altimeter setting and increase all DA 45 feet and all MDA 60 feet. Increase LNAV/VNAV all Cats visibilities to 1¼ mile and LNAV Cat C visibility to 1½ mile.</p>	MISSED APPROACH: Climb to 3000 direct YIRUC and on track 147° to ALVUS and hold.
-----------	---	---

ASOS 118.375	TORONTO CENTER 132.65 344.5	UNICOM 122.7 (CTAF) 0
------------------------	---------------------------------------	---------------------------------



CATEGORY	A	B	C	D
LPV DA	962-1	250 (300-1)		NA
LNAV/VNAV DA	1137-1½	425 (500-1½)		NA
LNAV MDA	1240-1	528 (600-1)	1240-1½ 528 (600-1½)	NA

EC-1, 10 SEP 2020 to 08 OCT 2020

EC-1, 10 SEP 2020 to 08 OCT 2020