

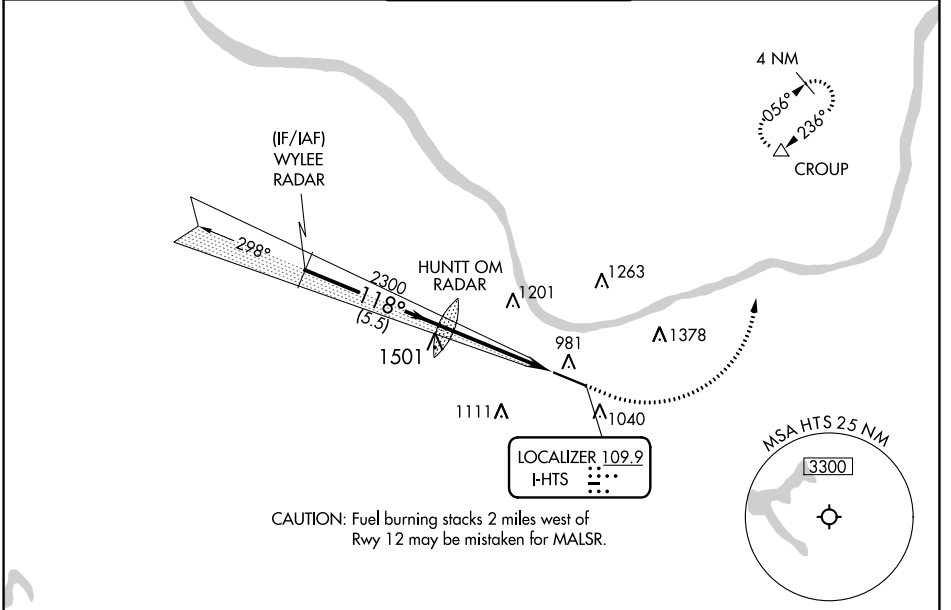
LOC I-HTS 109.9	APP CRS 118°	Rwy Idg 6516
		TDZE 828
		Apt Elev 828

ILS or LOC RWY 12

TRI-STATE/MILTON J FERGUSON FIELD (HTS)

RNAV-1 GPS required. RADAR required.	MALSRL	MISSED APPROACH: Climb to 1700 then climbing left turn to 3000 direct CROUP and hold.
ASR ** RVR 1800 authorized with use of FD or AP or HUD to DA.		

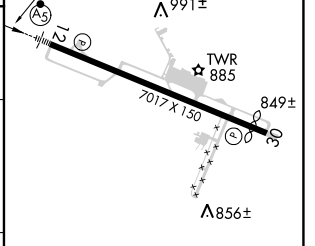
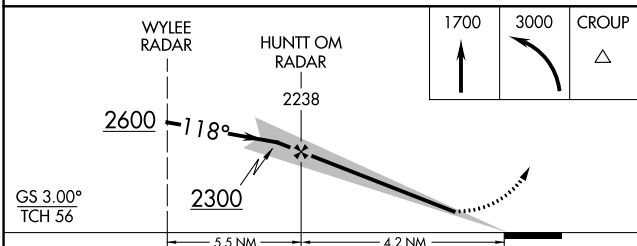
ATIS 125.2	HUNTINGTON APP CON 119.75 270.1	HUNTINGTON TOWER 118.5 270.1	GND CON 121.9	CLNC DEL 118.05
----------------------	---	--	-------------------------	---------------------------



NE-4, 10 SEP 2020 to 08 OCT 2020

NE-4, 10 SEP 2020 to 08 OCT 2020

ELEV 828	D	TDZE 828
----------	----------	----------



CATEGORY	A	B	C	D
S-ILS 12**	1028/24		200 (200-½)	
S-LOC 12	1380/24	552 (600-½)	1380/60	552 (600-1¼)
C CIRCLING	1380-1	552 (600-1)	1520-2 692 (700-2)	1820-3 992 (1000-2)

REIL Rwy 30	HIRL Rwy 12-30				
FAF to MAP 4.2 NM					
Knots	60	90	120	150	180
Min:Sec	4:12	2:48	2:06	1:41	1:24