

LOC I-TUU <b>108.7</b>	APP CRS <b>298°</b>	Rwy Idg <b>6516</b>
		TDZE <b>828</b>
		Apt Elev <b>828</b>

# ILS or LOC RWY 30

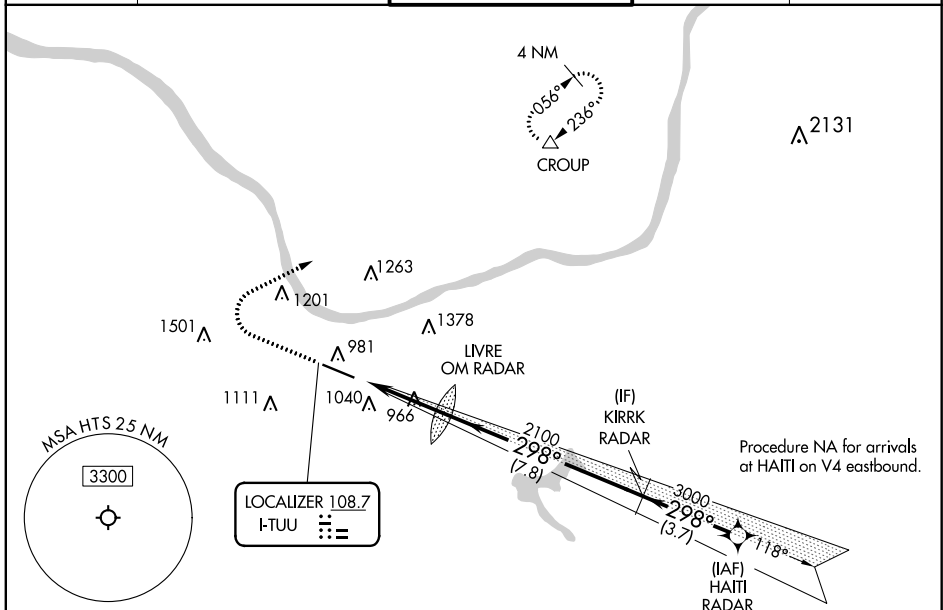
TRI-STATE/MILTON J FERGUSON FIELD (HTS)

RNAV 1-GPS required. RADAR required.

▼  
▲  
ASR

MISSED APPROACH: Climb to 1700 then climbing right turn to 3000 direct CROUP and hold.

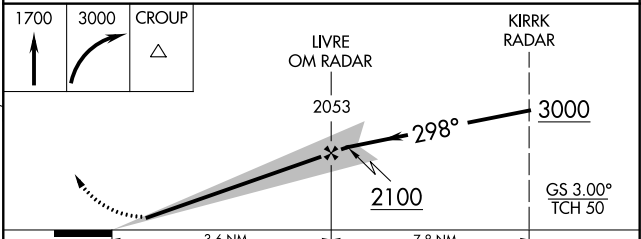
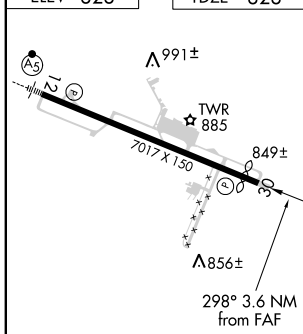
ATIS <b>125.2</b>	HUNTINGTON APP CON <b>119.75 270.1</b>	HUNTINGTON TOWER <b>118.5 270.1</b>	GND CON <b>121.9</b>	CLNC DEL <b>118.05</b>
----------------------	---	--	-------------------------	---------------------------



NE-4, 10 SEP 2020 to 08 OCT 2020

NE-4, 10 SEP 2020 to 08 OCT 2020

ELEV 828	TDZE 828
----------	----------



	3.6 NM		7.8 NM	
CATEGORY	A	B	C	D
S-ILS 30	1028-3/4		200 (200-3/4)	
S-LOC 30	1220-1	392 (400-1)	1220-1 1/8	392 (400-1 1/8)
<input checked="" type="checkbox"/> CIRCLING	1320-1 492 (500-1)	1380-1 552 (600-1)	1520-2 692 (700-2)	1820-3 992 (1000-3)

REIL Rwy 30  
HIRL Rwy 12-30

FAF to MAP 3.6 NM

Knots	60	90	120	150	180
Min:Sec	3:36	2:24	1:48	1:26	1:12