

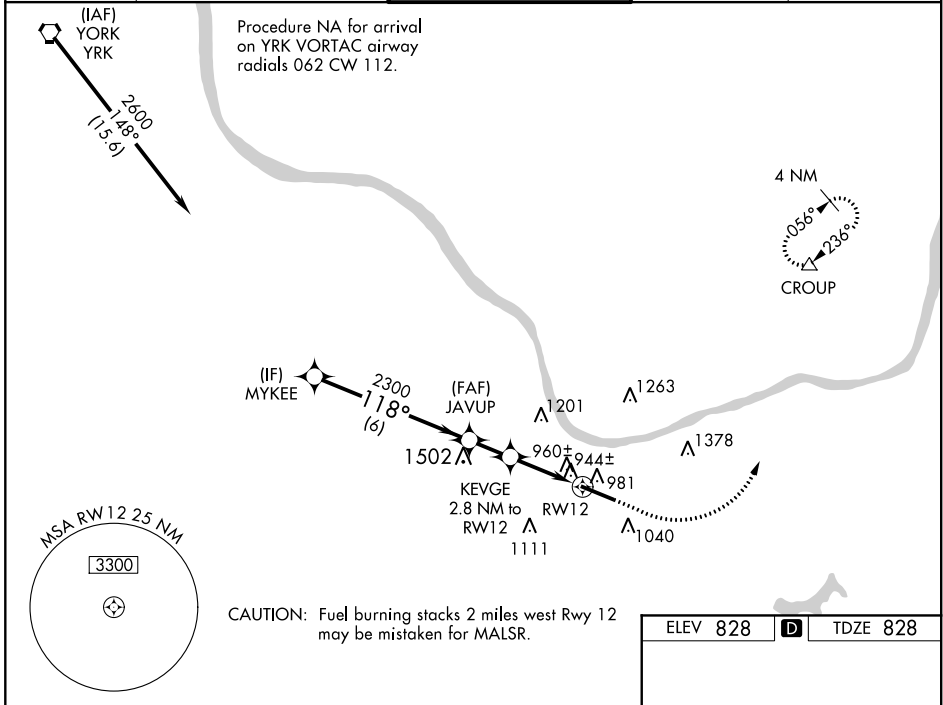
| | | | |
|--|------------------------|-----------------------------|---|
| WAAS CH 45699 W12A | APP CRS 118° | Rwy Idg TDZE Apt Elev | 6516 828 828 |
|--|------------------------|-----------------------------|---|

RNAV (GPS) RWY 12

TRI-STATE/MILTON J FERGUSON FIELD (HTS)

| | | |
|--|--------|--|
| RNP APCH. | MALSRL | MISSED APPROACH: Climb to 1700 then climbing left turn to 3000 direct CROUP and hold. |
| ASR For inoperative ALS, increase LNAV/VNAV all Cats visibility to RVR 4500, LNAV Cat A/B to RVR 5500, Cat C/D to RVR 6000. For uncompensated Baro-VNAV systems, LNAV/VNAV NA below 16°C or above 38°C. Rwy 12 helicopter visibility reduction below ¾ SM NA. | | |

| | | | | |
|----------------------|---|--|-------------------------|---------------------------|
| ATIS 125.2 | HUNTINGTON APP CON 119.75 270.1 | HUNTINGTON TOWER 118.5 270.1 | GND CON 121.9 | CLNC DEL 118.05 |
|----------------------|---|--|-------------------------|---------------------------|



NE-4, 10 SEP 2020 to 08 OCT 2020

NE-4, 10 SEP 2020 to 08 OCT 2020

| | | | |
|--------------------|--------|-------------------------|-------------------------|
| | 1700 | 3000 | CROUP |
| | | | |
| | | | *LNAV only. |
| MYKEE | JAVUP | KEVGE 2.8 NM to RW12 | RW12 |
| 2600 | 2300 | *1.1 NM to RW12 | |
| GP 3.00° TCH 56 | 118° | *1760 | |
| | 6 NM | 1.7 NM | 1.1 NM |
| CATEGORY | A | B | C |
| LPV DA | | 1028/40 | 200 (200-¾) |
| LNAV/VNAV DA | | 1126/40 | 298 (300-¾) |
| LNAV MDA | | 1220/40 | 392 (400-¾) |
| CIRCLING | 1340-1 | 512 (600-1) | 1340-1½ 512 (600-1½) |

