

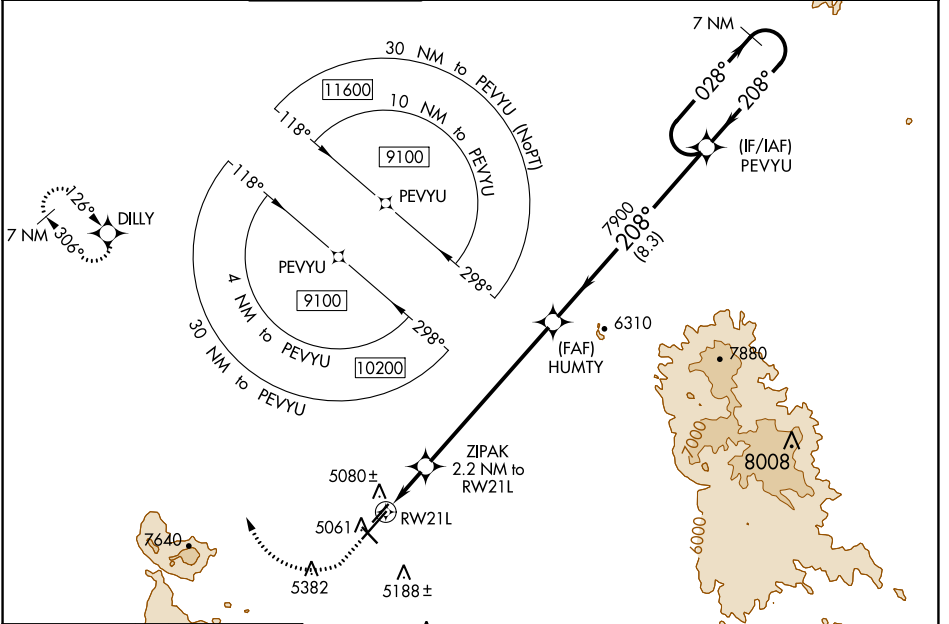
WAAS CH 40002 W21A	APP CRS 208°	Rwy Idg TDZE Apt Elev	7619 4977 5045
--	------------------------	-----------------------------	---

RNAV (GPS) RWY 21L

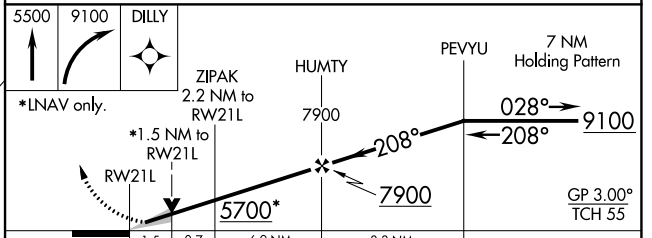
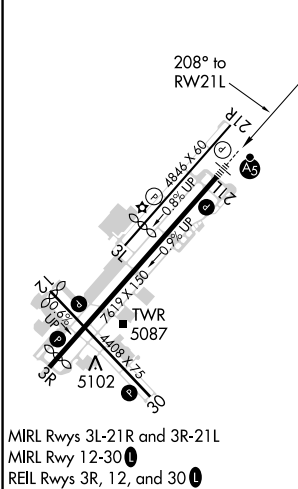
PRESCOTT RGNL - ERNEST A LOVE FIELD (PRC)

RNP APCH.		<p>▼ For uncompensated Baro-VNAV systems, LNAV/VNAV NA below -11°C or above 47°C. For inoperative MALSR increase LPV visibility all Cats to 1 mile. Circling Rwy 3L, 12, 30 NA at night. # Missed approach requires a minimum climb of 345 feet per NM to 7300.</p>		<p>MALSR</p>		<p>MISSED APPROACH: Climb to 5500 then climbing right turn to 9100 direct DILLY and hold, continue climb-in-hold to 9100.</p>	
-----------	--	---	--	--------------	--	---	--

ATIS 127.2	PHOENIX APP CON 133.575 281.55	PRESCOTT TOWER * 125.3 (CTAF) 257.9	GND CON 121.7	CLNC DEL 119.25	128.75 (1-2-30) 125.3 (CTAF) (3R-21L)	UNICOM 122.95
----------------------	--	---	-------------------------	---------------------------	--	-------------------------



ELEV 5045	D	TDZE 4977
-----------	---	-----------



CATEGORY	A	B	C	D
LPV DA		# 5177-½	200 (200-½)	
LPV DA		5277-½	300 (300-½)	
LNAV/VNAV DA		5391-¾	414 (400-¾)	
LNAV MDA	5480-½	503 (500-½)	5480-1	503 (500-1)
CIRCLING	5520-1	5760-1	6080-3	6680-3
	475 (500-1)	715 (800-1)	1035 (1100-3)	1635 (1700-3)

SW-4, 10 SEP 2020 to 08 OCT 2020

SW-4, 10 SEP 2020 to 08 OCT 2020