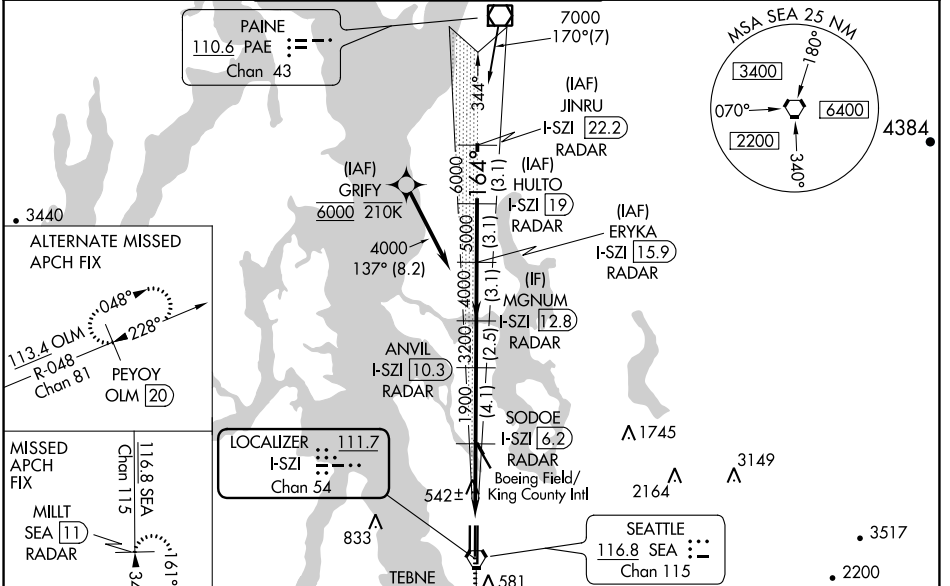


LOC/DME I-SZI 111.7 Chan 54	APP CRS 164°	Rwy Idg TDZE Apt Elev	16C 9426 430 432	16L 11901 432 432
--	------------------------	-----------------------------	--	---

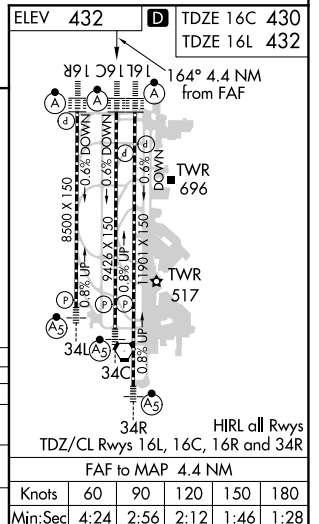
ILS or LOC RWY 16C

SEATTLE-TACOMA INTL (SEA)

DME or RADAR required. From GRIFY:RNAV 1-GPS required.		ALSF-2 Rwy 16C/L 	MISSED APPROACH: Climb on heading 160° and SEA VORTAC R-161 to cross TEBNE/SEA 2.4 DME/RADAR at or below 2000, then climb to 5000 on SEA VORTAC R-161 to MILLT/SEA 11 DME/RADAR and hold, continue climb-in-hold to 5000.			
Inop table does not apply to Sidstep 16L Cats A/B. Simultaneous approach authorized with Rwy 16R. Simultaneous operations require use of vertical guidance, maintain last assigned altitude until established on glideslope. For inop ALS, increase S-LOC 16C Cat C, D visibility to RVR 5500. See additional requirements on adjacent information page.	D-ATIS 118.0		SEATTLE APP CON 133.65 273.45	SEATTLE TOWER 119.9 239.3 (Rwys 16L, 16C, 34C, 34R) 120.95 239.3 (Rwys 16R, 34L)	GND CON 121.7	CLNC DEL 128.0



ALTERNATE MISSED APCH FIX 113.4 OLM R-048 Chan 81 PEYOY OLM 20 048° 228°	MISSED APCH FIX MILLT SEA 11 RADAR 116.8 SEA Chan 115 161° 341°	LOCALIZER 111.7 I-SZI Chan 54	PAINÉ 110.6 PAE Chan 43	
SEA R-161 hdg 160° TEBNE SEA 2.4 2000 5000 SEA R-161 MILLT SEA 11	VGSi and ILS glidepath not coincident (VGSi Angle 3.00/TCH 71).			
*LOC only I-SZI 1.7 SODOE I-SZI 6.2 RADAR ANVIL I-SZI 10.3 RADAR I-SZI 12.8 RADAR ERYKA I-SZI 15.9 RADAR HULTO I-SZI 19 RADAR JINRU I-SZI 22.2 RADAR	1900 3200 4000 5000 6000	164° 7000 6000 5000	GS 3.00° TCH 55	
CATEGORY S-ILS 16C	A	B	C	D
S-LOC 16C	800/24	370 (400-½)	800/35	370 (400-¾)
SIDESTEP 16L	800/55	368 (400-1)	800-1½ 368 (400-1½)	1000-2 368 (400-1½)
CIRCLING	1000-1	568 (600-1)	1000-1½ 568 (600-1½)	1000-2 568 (600-2)



NW-1, 10 SEP 2020 to 08 OCT 2020

NW-1, 10 SEP 2020 to 08 OCT 2020