

LOC/DME I-SNQ 110.3 Chan 40	APP CRS 164°	Rwy Idg 11901 TDZE 432 Apt Elev 432
---	------------------------	--

ILS or LOC RWY 16L

SEATTLE-TACOMA INTL (SEA)

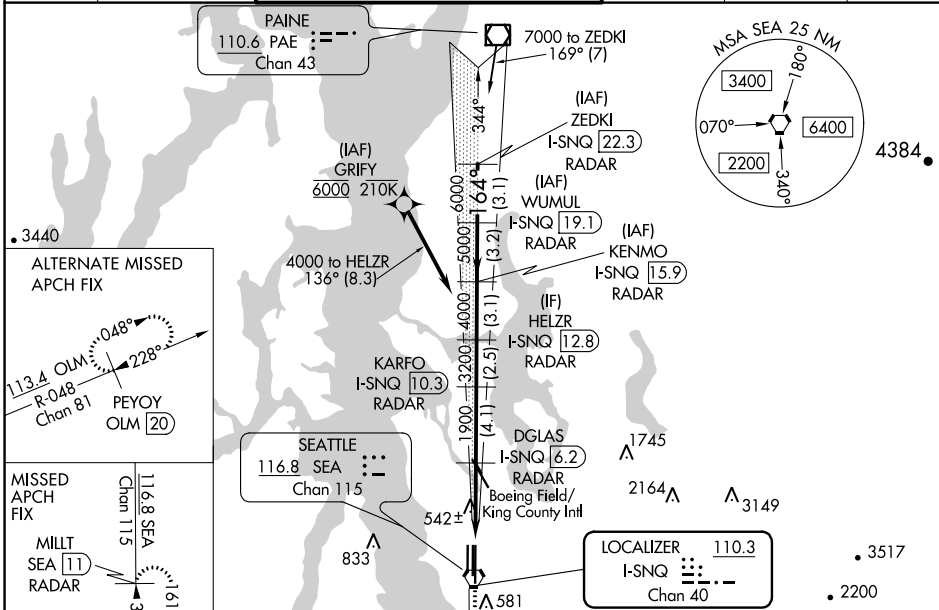
DME or RADAR required. From GRIFY:RNAV 1-GPS required.

ALSIF-2

MISSED APPROACH: Climb to 900 on heading 165° then on SEA VORTAC R-161 to cross TEBNE/SEA 2.4 DME/RADAR at or below 2000 then climb to 5000 on SEA VORTAC R-161 to MILLT/SEA 11 DME/RADAR and hold, continue climb-in-hold to 5000.

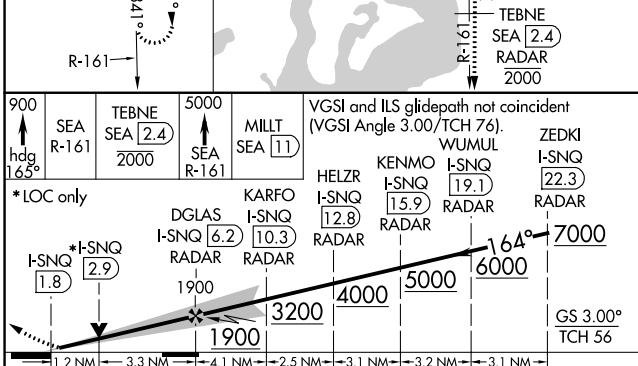
Simultaneous approach authorized with Rwy 16R.

D-ATIS 118.0	SEATTLE APP CON 133.65 273.45	SEATTLE TOWER 119.9 239.3 (Rwys 16L, 16C, 34C, 34R) 120.95 239.3 (Rwys 16R, 34L)	GND CON 121.7	CLNC DEL 128.0	CPDLC
------------------------	---	--	-------------------------	--------------------------	-------



NW-1, 10 SEP 2020 to 08 OCT 2020

NW-1, 10 SEP 2020 to 08 OCT 2020



900 hdg 165°	SEA R-161	TEBNE SEA 2.4 2000	MILLT SEA 11	VGS and ILS glidepath not coincident (VGS Angle 3.00/TCH 76)	WUMUL I-SNQ 19.1 RADAR	ZEDKI I-SNQ 22.3 RADAR
*LOC only				HELZR I-SNQ 12.8 RADAR	KENMO I-SNQ 15.9 RADAR	
	DGLAS I-SNQ 6.2 RADAR	KARFO I-SNQ 10.3 RADAR				
	I-SNQ 1.8	I-SNQ 2.9				
CATEGORY	A	B	C	D		
S-ILS 16L	697/20 265 (300-1/2)	632/18 200 (200-1/2)				
S-LOC 16L	880/24 448 (500-1/2)	880/45 448 (500-2/5)				
CIRCLING	1000-1 568 (600-1)	1000-1 1/2 568 (600-1 1/2)	1000-2 568 (600-2)			

