

ILS or LOC RWY 34R

SEATTLE-TACOMA INTL (SEA)

LOC/DME I-SEA 110.3 Chan 40	APP CRS 344°	Rwy Idg 34R 34C	11901 9426
		TDZE	372 387
		Apt Elev	432 432

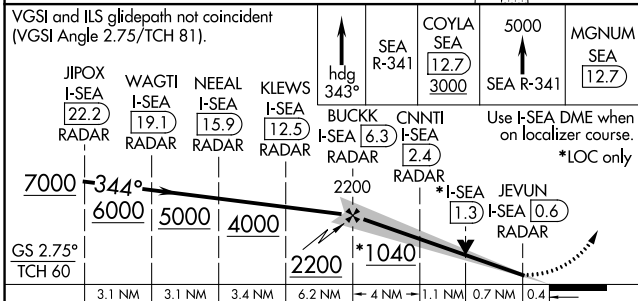
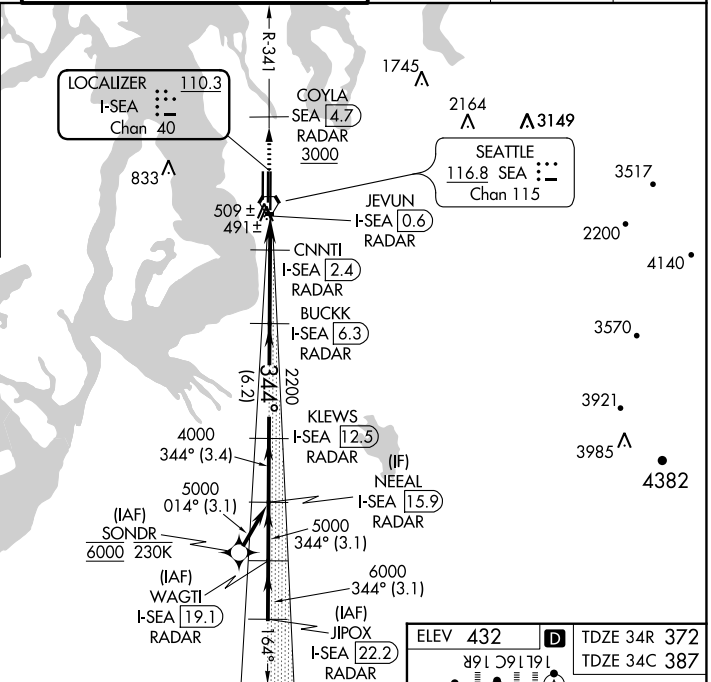
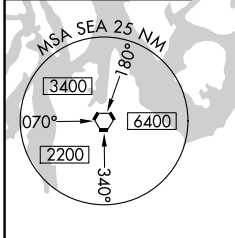
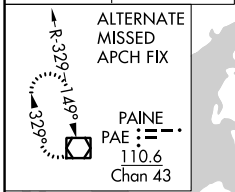
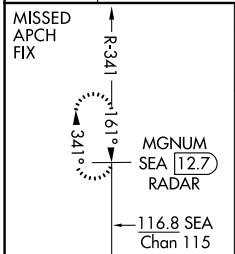
From SONDR: RNAV 1-GPS required.
DME or RADAR required.

▼ Inop table does not apply to Sidestep 34C Cats A/B.
Simultaneous approach authorized with Rwy 34L.

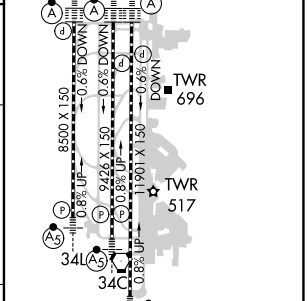
MALSR Rwy 34R/C

MISSED APPROACH: Climb on heading 343° and outbound on SEA VORTAC R-341 to cross COYLA/SEA 4.7 DME/RADAR at or above 3000 then climb to 5000 on SEA VORTAC R-341 to MGNUM/SEA 12.7 DME/RADAR and hold, continue climb-in-hold to 5000.

D-ATIS 118.0	SEATTLE APP CON 133.65 273.45	SEATTLE TOWER 119.9 239.3 (Rwys 16L, 16C, 34C, 34R) 120.95 239.3 (Rwys 16R, 34L)	GND CON 121.7	CLNC DEL 128.0	CPDLC
------------------------	---	--	-------------------------	--------------------------	-------



ELEV 432	TDZE 34R 372
	TDZE 34C 387



CATEGORY	A	B	C	D
S-ILS 34R		572/18	200 (200-½)	
S-LOC 34R	740/24	368 (400-½)	740/35	368 (400-¾)
SIDESTEP 34C	760/55	373 (400-1)		760-1½ 373 (400-1½)
◻ CIRCLING	1000-1	568 (600-1)	1000-1½ 568 (600-1½)	1000-2 568 (600-2)

344° 6.1 NM from FAF	HIRL all Rwys TDZ/CL Rwys 16L, 16C, 16R and 34R
FAF to MAP 5.8 NM	
Knots	60 90 120 150 180
Min:Sec	5:48 3:52 2:54 2:19 1:56

NW-1, 10 SEP 2020 to 08 OCT 2020

NW-1, 10 SEP 2020 to 08 OCT 2020