


APP CRS	Rwy Idg	11901
164°	TDZE	433
	Apt Elev	433

RNAV (RNP) Z RWY 16L

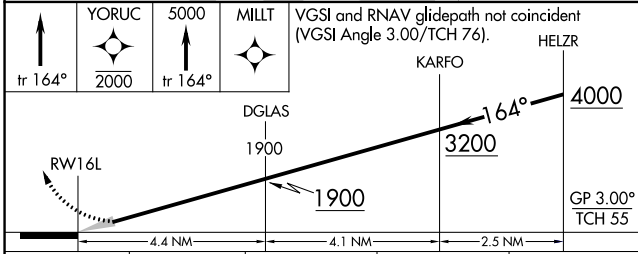
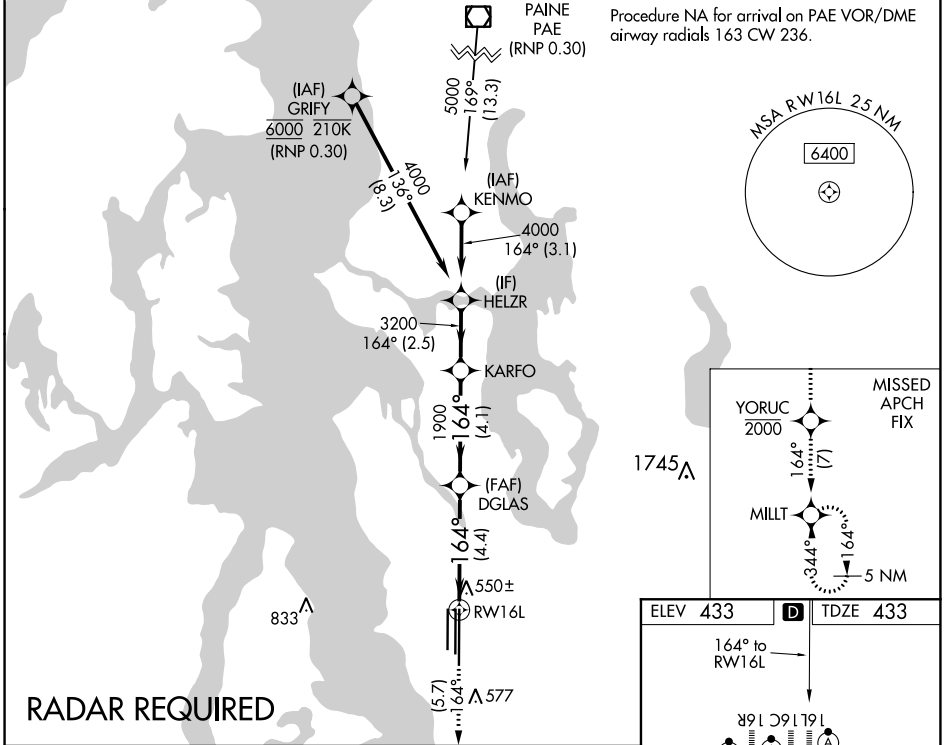
SEATTLE-TACOMA INTL (SEA)

▼ For uncompensated Baro-VNAV systems, procedure NA below -6°C (22°F) or above 54°C (130°F). Simultaneous approach authorized with Rwy 16R. GPS required. Use of FD or AP providing RNAV track guidance required during simultaneous operations. For inop ALS, increase RNP 0.30 all Cats visibility to 1½ mile.

ALSF-2 

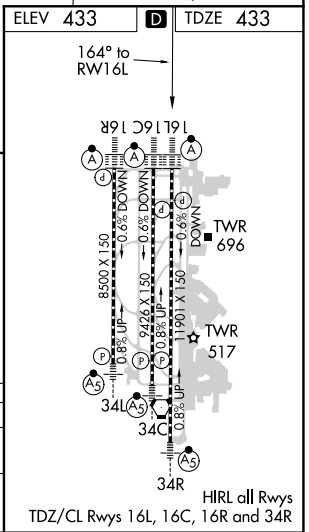
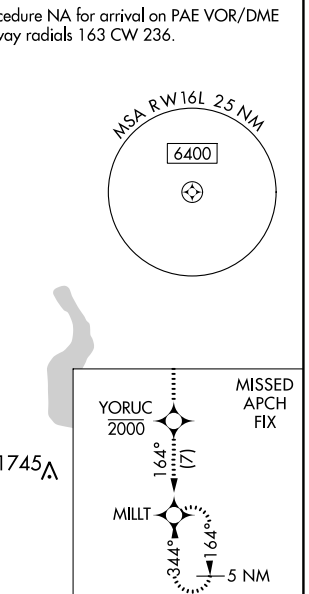
MISSED APPROACH: Climb on track 164° to cross YORUC at or below 2000, then climb to 5000 on track 164° to MILLT and hold, continue climb-in-hold to 5000.

D-ATIS	SEATTLE APP CON	SEATTLE TOWER	GND CON	CLNC DEL	CPDLC
118.0	133.65 273.45	119.9 239.3 (Rwys 16L, 16C, 34C, 34R) 120.95 239.3 (Rwys 16R, 34L)	121.7	128.0	



CATEGORY	A	B	C	D
RNP 0.30 DA		842/45	409 (500-%)	

AUTHORIZATION REQUIRED



NW-1, 10 SEP 2020 to 08 OCT 2020

NW-1, 10 SEP 2020 to 08 OCT 2020