

APP CRS <b>300°</b>	Rwy Idg <b>7000</b>
	TDZE <b>1232</b>
	Apt Elev <b>1249</b>

# RNAV (RNP) Z RWY 30

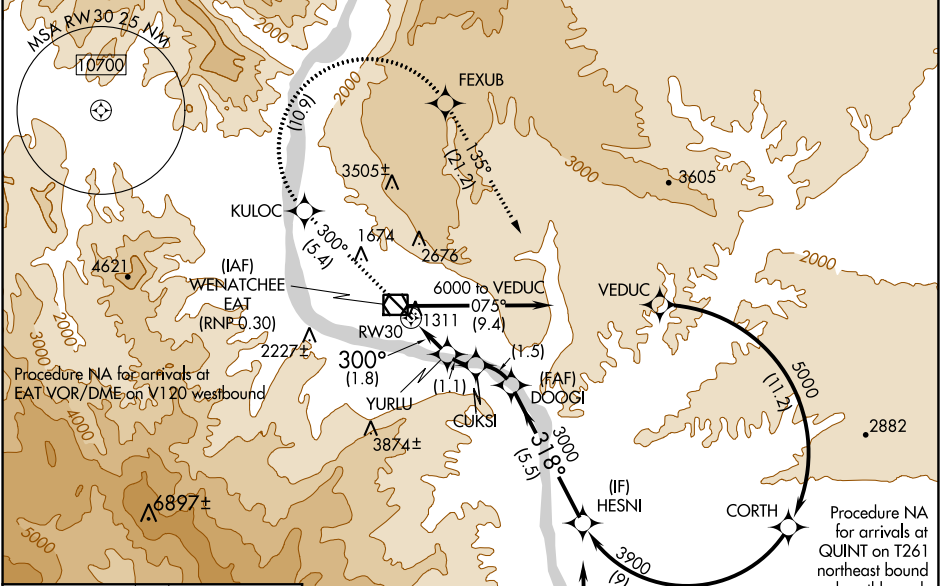
PANGBORN MEMORIAL (EAT)

**⚠** -7°C For uncompensated Baro-VNAV systems, procedure NA below -10°C (14°F) or above 44°C (111°F). RF required. GPS required. FD or HUD required.

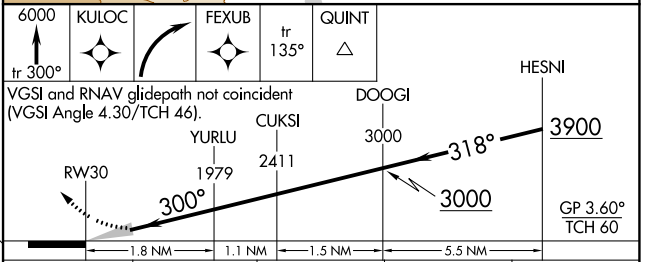
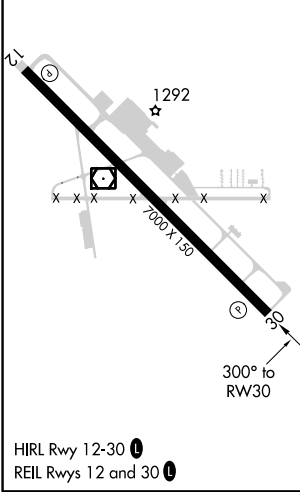
**MISSED APPROACH:** Climb to 6000 on track 300° to KULOC, right turn to FEXUB, and on track 135° to QUINT and hold.

\*Missed approach requires minimum climb of 320 feet per NM to 5500.  
#Missed approach requires minimum climb of 325 feet per NM to 5500.

ASOS <b>119.925</b>	SEATTLE CENTER <b>126.1 291.6</b>	UNICOM <b>123.0 (CTAF) 0</b>
------------------------	--------------------------------------	---------------------------------



ELEV 1249	<b>D</b>	TDZE 1232
-----------	----------	-----------



CATEGORY	A	B	C	D
RNP 0.17 DA*	1595-1		363 (400-1)	NA
RNP 0.30 DA#	1686-1 $\frac{3}{8}$		454 (500-1 $\frac{3}{8}$ )	NA

## AUTHORIZATION REQUIRED

NW-1, 10 SEP 2020 to 08 OCT 2020

NW-1, 10 SEP 2020 to 08 OCT 2020