

NW-1, 10 SEP 2020 to 08 OCT 2020

DEPARTURE ROUTE DESCRIPTION

TAKEOFF RUNWAY 12: Climb heading 120° to 3700, then left turn direct PREBE, thence . . .

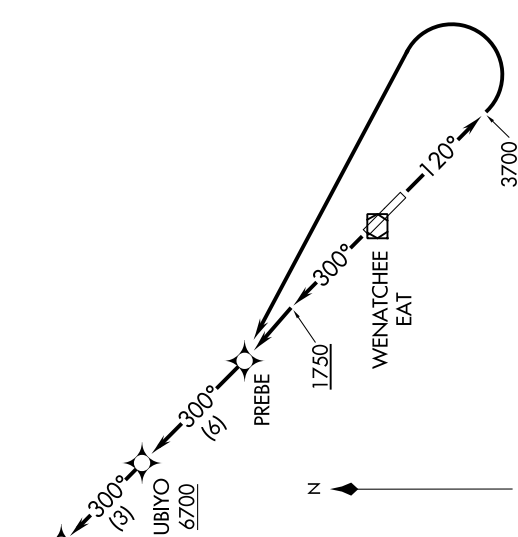
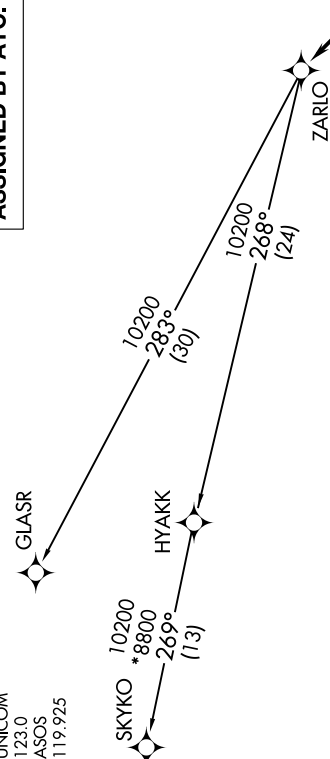
TAKEOFF RUNWAY 30: Climb heading 300° to 1750, then direct PREBE, thence . . .

. . . on track 300° to cross UBIYO at or above 6700, then on depicted route to ZARLO, then on transition. Expect filed altitude 10 minutes after departure.

GLASR TRANSITION [ZARLO2.GLASR]
SKYKO TRANSITION [ZARLO2.SKYKO]

**TOP ALTITUDE:
ASSIGNED BY ATC.**

SEATTLE CENTER
126.1 291.6
UNICOM
123.0
ASOS
119.925



TAKEOFF MINIMUMS
 Rwy 12: Standard with minimum climb of 650' per NM to 3300.
 Rwy 30: Standard with minimum climb of 465' per NM to 6200.

NOTE: RNAV 1.
NOTE: GPS required.
NOTE: Departures may be restricted to cross UBIYO at or below 11000.

NOTE: Chart not to scale.

NW-1, 10 SEP 2020 to 08 OCT 2020