

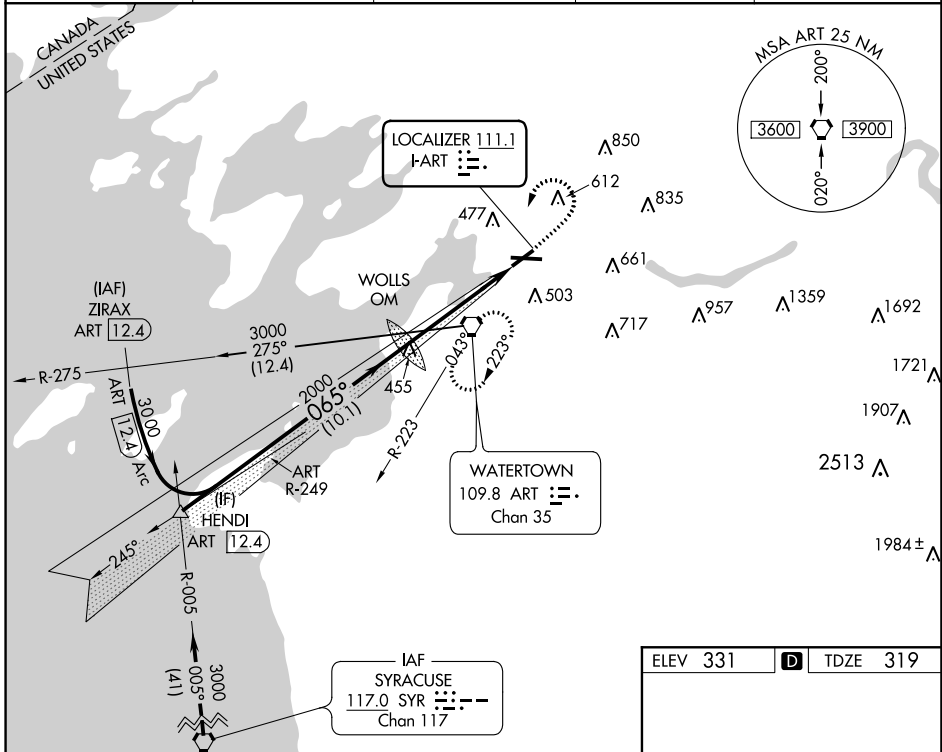
LOC I-ART <b>111.1</b>	APP CRS <b>065°</b>	Rwy Idg TDZE Apt Elev	<b>4784</b> <b>319</b> <b>331</b>
---------------------------	------------------------	-----------------------------	---

# ILS or LOC RWY 7

WATERTOWN INTL (ART)

<p>-37°C</p>	<p>MALSR</p>	<p>MISSED APPROACH: Climb to 900 then climbing left turn to 2400 direct ART VORTAC and hold.</p>

ASOS <b>132.325</b>	GTB ATIS <b>119.525</b>	WHEELER-SACK APP CON <b>124.875 257.6</b>	CLNC DEL <b>120.8</b>	UNICOM <b>123.0 (CTAF)</b>
------------------------	----------------------------	--	--------------------------	-------------------------------



NE-2, 10 SEP 2020 to 08 OCT 2020

NE-2, 10 SEP 2020 to 08 OCT 2020

VGSI and ILS glidepath not coincident (VGSI Angle 3.00/TCH 51).

	900	2400	ART
HENDI INT ART 12.4	3000		
	065°		
	2000		
	10.1 NM	4.8 NM	
GS 3.00°	TCH 55		
CATEGORY	A	B	C
S-ILS 7	519-½ 200 (200-½)		
S-LOC 7	760-½ 441 (500-½)	760-¾ 441 (500-¾)	
CIRCLING	960-1 629 (700-1)	980-1¾ 649 (700-1¾)	1080-2½ 749 (800-2½)

