

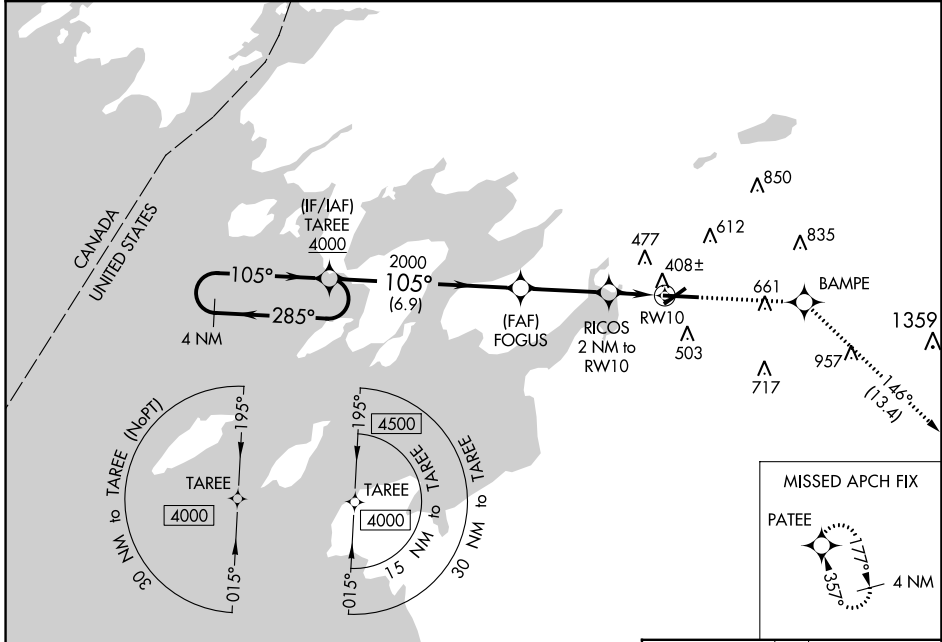
WAAS CH 53522 W10A	APP CRS 105°	Rwy Idg TDZE Apt Elev	7001 318 331
--	------------------------	-----------------------------	---

RNAV (GPS) RWY 10

WATERTOWN INTL (ART)

RNP APCH.	MISSED APPROACH: Climb to 3600 direct BAMPE and on track 146° to PATEE and hold.
For uncompensated Baro-VNAV systems, LNAV/VNAV NA below -20°C or above 54°C. Rwy 10 helicopter visibility reduction below 3/4 SM NA. -37°C	

ASOS 132.325	GTB ATIS 119.525	WHEELER-SACK APP CON 124.875 257.6	CLNC DEL 120.8	UNICOM 123.0 (CTAF) 0
------------------------	----------------------------	--	--------------------------	---------------------------------



NE-2, 10 SEP 2020 to 08 OCT 2020

NE-2, 10 SEP 2020 to 08 OCT 2020

4 NM Holding Pattern		TAREE 4000		ELEV 331		TDZE 318
		FOGUS	RICOS	*LNNAV only.		
		2000	2 NM to RW10	↑ 3600		↑ 146°
GP 3.00° TCH 47		*980	*1 NM to RW10			
CATEGORY	A	B	C	D		
LPV DA		568-3/4	250 (300-3/4)			
LNNAV/VNAV DA		578-3/4	260 (300-3/4)			
LNNAV MDA		660-1	342 (400-1)			
CIRCLING	960-1	629 (700-1)	980-1 3/4 649 (700-1 3/4)	1080-2 1/2 749 (800-2 1/2)		

REIL Rwy 28

HIRL Rwy 7-25

MIRL Rwy 10-28