

WAAS CH <b>82322</b> <b>W28A</b>	APP CRS <b>285°</b>	Rwy Idg TDZE Apt Elev	<b>7001</b> <b>331</b> <b>331</b>
--	------------------------	-----------------------------	---

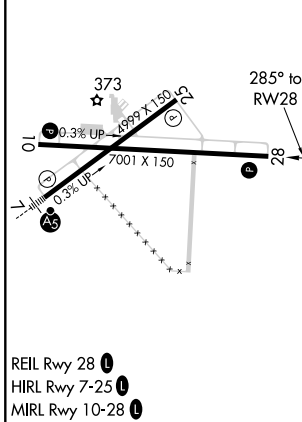
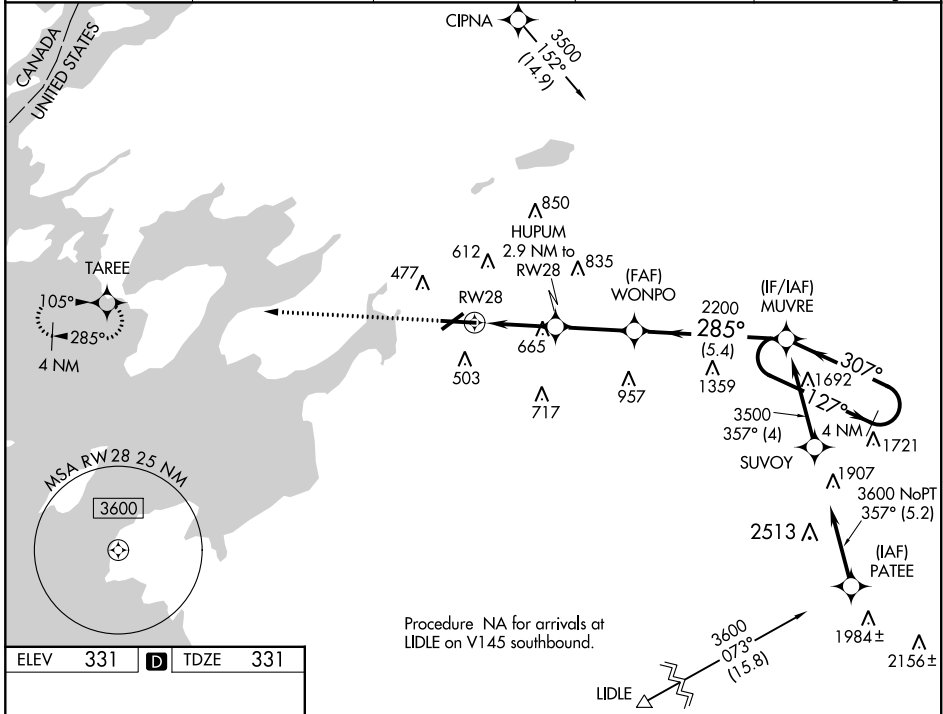
# RNAV (GPS) RWY 28

WATERTOWN INTL (ART)

**⚠** For uncompensated Baro-VNAV systems, procedure NA below -20°C (-4°F) or above 54°C (130°F). Baro-VNAV and VDP NA when using Wheeler-Sack AAF altimeter setting. DME/DME RNP-0.3 NA. When local altimeter setting not received, use Wheeler-Sack AAF altimeter setting; increase LPV DA to 663 feet and all visibilities to 1½ SM; LNAV/VNAV DA to 934 feet and all visibilities to 2½ SM. Increase all MDA 100 feet and LNAV Cat C and D visibility ½ SM, Circling Cat C ½ SM and Cat D ¼ SM. Rwy 28 helicopter visibility reduction below ¾ SM NA.

**⚠** MISSED APPROACH: Climb to 2400 direct TAREE and hold.

ASOS <b>132.325</b>	GTB ATIS <b>119.525</b>	WHEELER-SACK APP CON <b>124.875 257.6</b>	CLNC DEL <b>120.8</b>	UNICOM <b>123.0 (CTAF)</b>
------------------------	----------------------------	--	--------------------------	-------------------------------



2400 TAREE	↑	WONPO	MUVRE	4 NM Holding Pattern
HUPUM 2.9 NM to RW28		2200	127° → 3500	
*1.7 NM to RW28		2200	← 307°	GP 3.00° TCH 45
1.7	1.2	2.8 NM	5.4 NM	
CATEGORY	A	B	C	D
LPV DA		581-3/4	250 (300-3/4)	
LNAV/VNAV DA		852-1 3/4	521 (600-1 3/4)	
LNAV MDA	920-1	589 (600-1)	920-1 3/4	589 (600-1 3/4)
<b>C</b> CIRCLING	960-1	629 (700-1)	980-1 3/4 649 (700-1 3/4)	1080-2 1/2 749 (800-2 1/2)

NE-2, 10 SEP 2020 to 08 OCT 2020

NE-2, 10 SEP 2020 to 08 OCT 2020